

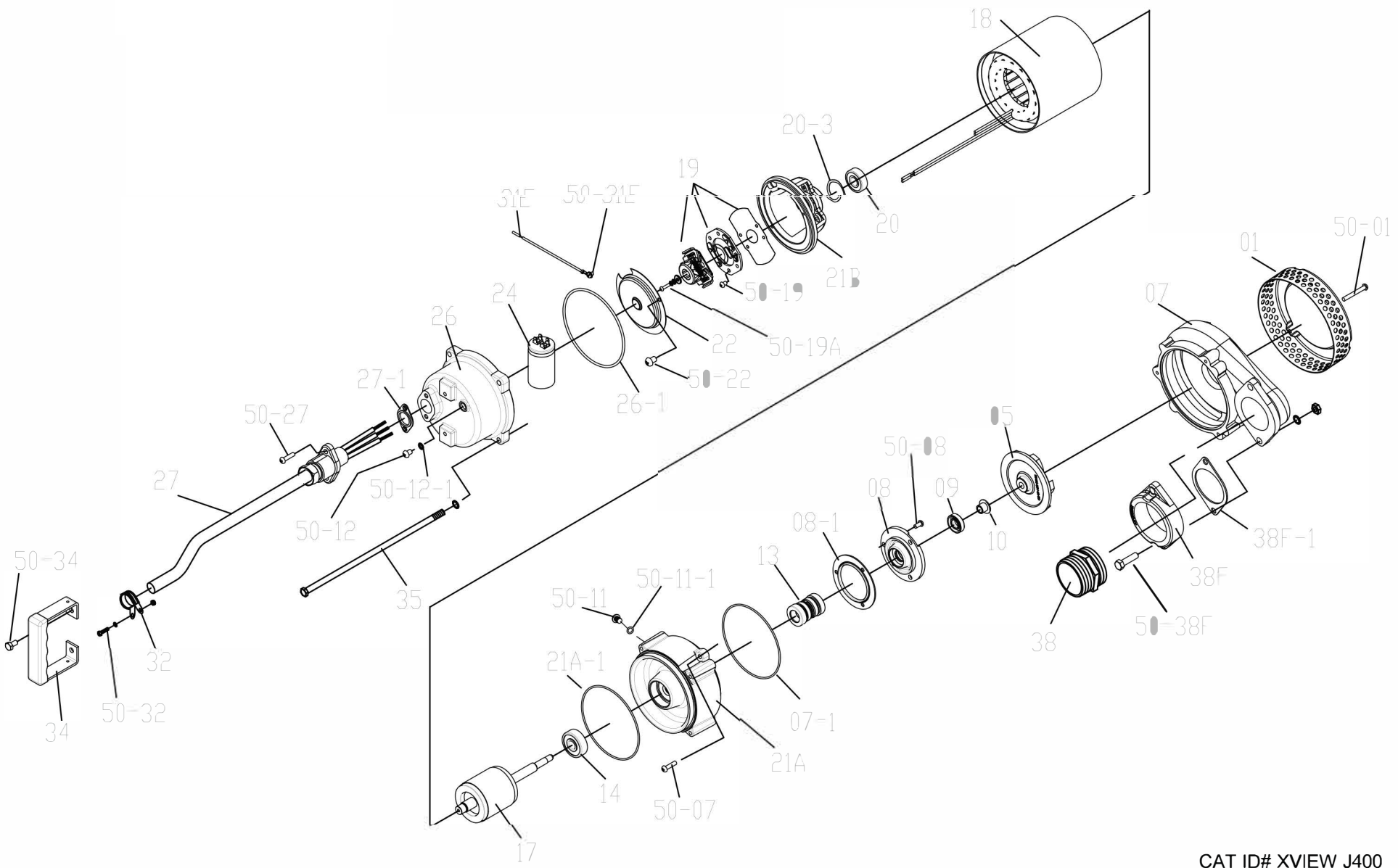
J-SERIES

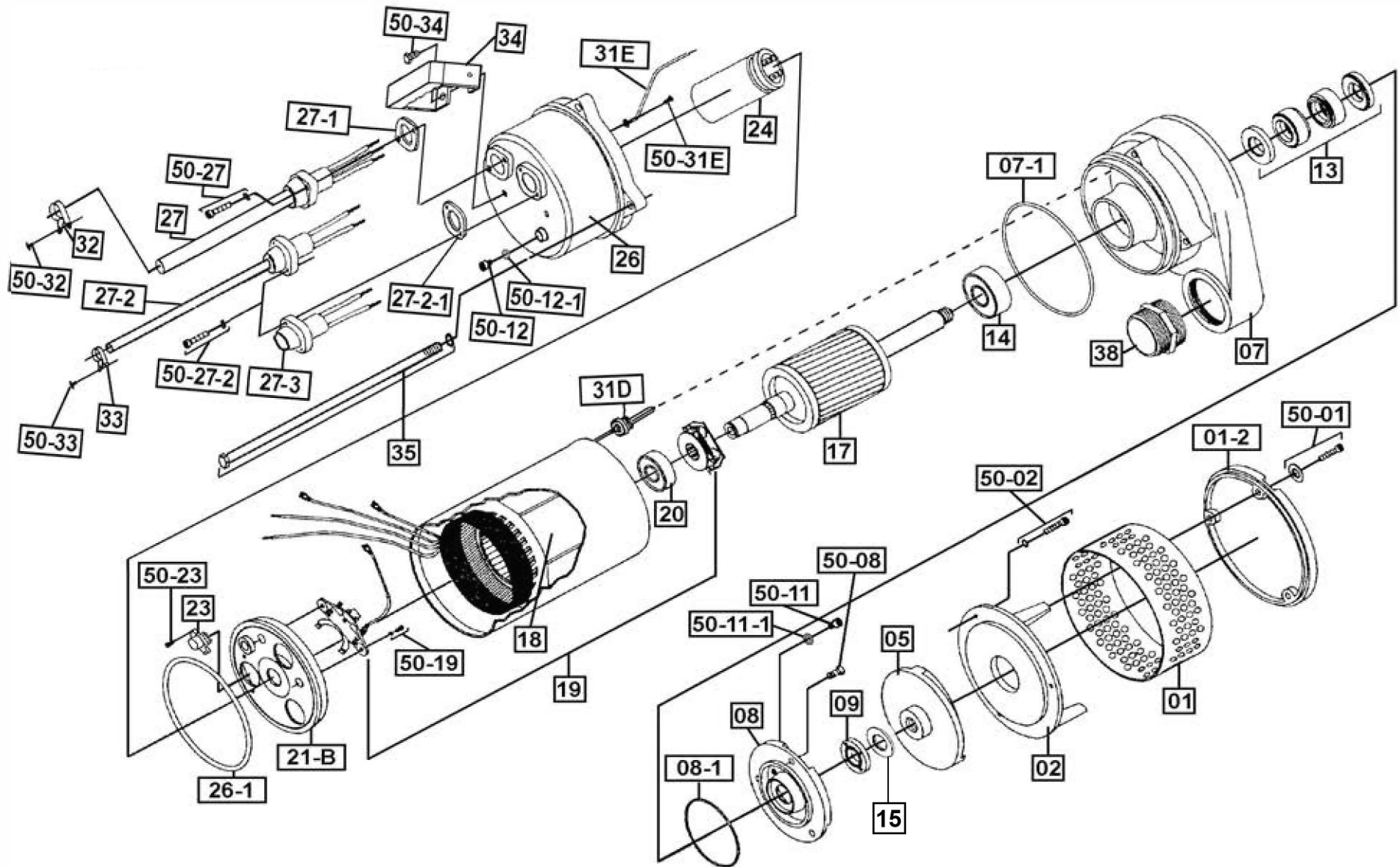
	Pump Model	J150	J400	J750	J1500	J1500H	J08	J15	J15H	J22	J22H	J37	J37H	J55C	J55CH	J75C	J75CH
Pos. No.	Part Description	Item #	Item #	Item #	Item #	Item #	Item #	Item #	Item #	Item #	Item #	Item #	Item #	Item #	Item #	Item #	Item #
01	Strainer with Bottom Plate	201979	201964	-	-	-	-	-	-	201973	201973	201973	201973	201976	201976	201976	201976
01	Strainer	-	-	201969	201969	201969	201969	201969	201969	-	-	-	-	-	-	-	-
01-2	Bottom Plate	-	-	202007	202007	202007	202007	202007	202007	-	-	-	-	-	-	-	-
02	Suction Cover	-	-	202026	202026	202026	202026	202026	202026	202009	202011	202009	202009	202031	202032	202031	202032
03	Impeller Nut	202890	-	-	-	-	202894	202894	202894	202894	202894	202894	202894	202895	202895	202895	202895
04	Lock washer	-	-	-	-	-	202907	202907	202907	202907	202907	202907	202907	202907	202907	202907	202907
05	Impeller	202921	202055	202930	202062	202064	202933	202067	202069	202937	202072	202074	202076	202078	202079	202082	202083
06	Impeller Key	-	-	-	-	-	202140	202140	202140	202140	202140	202140	202140	202141	202141	202141	202141
07	Pump Housing	202988	202993	202163	202165	202163	202163	202165	202163	202167	202167	202167	202167	203007	203007	203007	203007
07 -1	O-Ring (Kit Only)	Kit	Kit	Kit	Kit	Kit	Kit	Kit	Kit	Kit	Kit	Kit	Kit	Kit	Kit	Kit	Kit
08	Oil Chamber Cover	202207	202207	202211	202211	202211	202211	202211	202211	202211	202211	202211	202211	203043	203043	203043	203043
08 -1	O-Ring (Kit Only)	Kit	Kit	Kit	Kit	Kit	Kit	Kit	Kit	Kit	Kit	Kit	Kit	Kit	Kit	Kit	Kit
09	Lip Seal Buna-N	202229	202229	202231	202231	202231	202231	202231	202231	202231	202231	202231	202231	203055	203055	203055	203055
09	Lip Seal FKM (Optional)	202230	202230	202233	202233	202233	202233	202233	202233	202233	202233	202233	202233	203058	203058	203058	203058
09	Lip Seal EPDM (Optional)	203050	203050	203053	203053	203053	203053	203053	203053	203053	203053	203053	203053	203056	203056	203056	203056
09A	Double Lip Seal Buna-N	-	-	-	-	-	-	-	-	-	-	-	-	202249	202249	202249	202249
09A	Double Lip Seal FKM (Optional)	-	-	-	-	-	-	-	-	-	-	-	-	202240	202240	202240	202240
09A	Double Lip Seal EPDM (Optional)	-	-	-	-	-	-	-	-	-	-	-	-	203060	203060	203060	203060
10	Shaft Sleeve	202258	202258	-	-	-	-	-	-	-	-	-	-	202256	202256	202256	202256
10-1	O-Ring (Kit Only)	-	-	-	-	-	-	-	-	-	-	-	-	Kit	Kit	Kit	Kit
10-2	O-Ring (Kit Only)	-	-	-	-	-	-	-	-	-	-	-	-	Kit	Kit	Kit	Kit
12	Lip Seal for Lower Bearing	-	-	-	-	-	-	-	-	-	-	-	-	202236	202236	202236	202236
13	Mechanical Seal Buna-N	202269	202259	200501	200501	200501	200501	200501	200501	200501	200501	200501	200501	200305	200305	200305	200305
13	Mechanical Seal FKM**	-	202260	200500	200500	200500	200500	200500	200500	200500	200500	200500	200500	200304	200304	200304	200304
14	Lower Ball Bearing	200957	200493	200958	200958	200958	200958	200958	200958	200959	200959	200959	200959	200960	200960	200961	200961
14-1	Lower Ball Bearing	-	-	-	-	-	-	-	-	-	-	-	-	200960	200960	200961	200961
14-2	Lower Bearing Retainer Clip	-	-	-	-	-	-	-	-	-	-	-	-	202279	202279	202279	202279
15	Impeller Shim Kit (Required)	-	-	200481	200481	200480	200480	200480	200480	200480	200480	200480	200480	200479	200479	200479	200479
17	Rotor w/ Shaft 115/230V, 1PH	202299	202302	203086	203091	203091	-	-	-	-	-	-	-	-	-	-	-
17	Rotor w/ Shaft, 3 PH	-	-	-	-	-	202306	202310	202310	202314	202314	202318	202318	202343	202343	202345	202345
18	Stator w/Casing, 115V, 1PH	-	200509	200511	-	-	-	-	-	-	-	-	-	-	-	-	-
18	Stator w/Casing, 230V, 1PH	-	200521	200570	200514	200514	-	-	-	-	-	-	-	-	-	-	-
18	Stator w/Casing, 208V, 3PH	-	-	-	-	-	200524	200528	200528	200532	200532	200536	200536	200665	200665	-	-
18	Stator w/Casing, 230V/460V, 3PH	-	-	-	-	-	200546	200550	200550	200554	200554	200558	200558	200562	200562	200566	200566
18	Stator w/Casing, 460V, 3PH	-	-	-	-	-	-	-	-	-	-	-	-	-	-	200566	200566
18	Stator w/Casing, 575V, 3PH	-	-	-	-	-	200588	200592	200592	200596	200596	200600	200600	200605	200605	200609	200609
19	Governor Switch w/Switch Plate	-	202359	202360	202360	202360	-	-	-	-	-	-	-	-	-	-	-
20	Upper Ball Bearing	200966	200957	200967	200967	200967	200967	200967	200967	200958	200958	200958	200958	200959	200959	200959	200959
20-1	O-Ring (Kit Only)	-	-	-	-	-	-	-	-	-	-	-	-	Kit	Kit	Kit	Kit
21A	Oil Chamber	202990	200498	-	-	-	-	-	-	-	-	-	-	202178	202178	202169	202169
21A-1	O-Ring (Kit Only)	Kit	Kit	-	-	-	-	-	-	-	-	-	-	Kit	Kit	Kit	Kit
21B	Motor Cover	-	202365	202368	202368	202368	-	-	-	-	-	-	-	-	-	-	-
22	Cover Plate Upper	-	202380	-	-	-	-	-	-	-	-	-	-	-	-	-	-
23	Overload 115V, 1PH	-	-	202383	-	-	-	-	-	-	-	-	-	-	-	-	-
23	Overload 230V, 1PH	-	-	202395	202383	202383	-	-	-	-	-	-	-	-	-	-	-
23	Overload 208V, 3PH	-	-	-	-	-	202385	202388	202388	202390	202390	202392	202392	202394	202394	-	-
23	Overload 230V, 3PH	-	-	-	-	-	202385	202388	202388	202390	202390	202392	202392	202394	202394	202396	202396
23	Overload 460V, 3PH	-	-	-	-	-	202387	202386	202386	202389	202389	202391	202391	202393	202393	202394	202394
23	Overload 575V, 3PH	-	-	-	-	-	202399	202387	202387	202386	202386	202389	202389	202391	202391	202393	202393
24	Capacitor 115V	202414	202415	202417	-	-	-	-	-	-	-	-	-	-	-	-	-
24	Capacitor 230V	-	202416	202418	202420	202420	-	-	-	-	-	-	-	-	-	-	-

Last updated on 4/9/2024

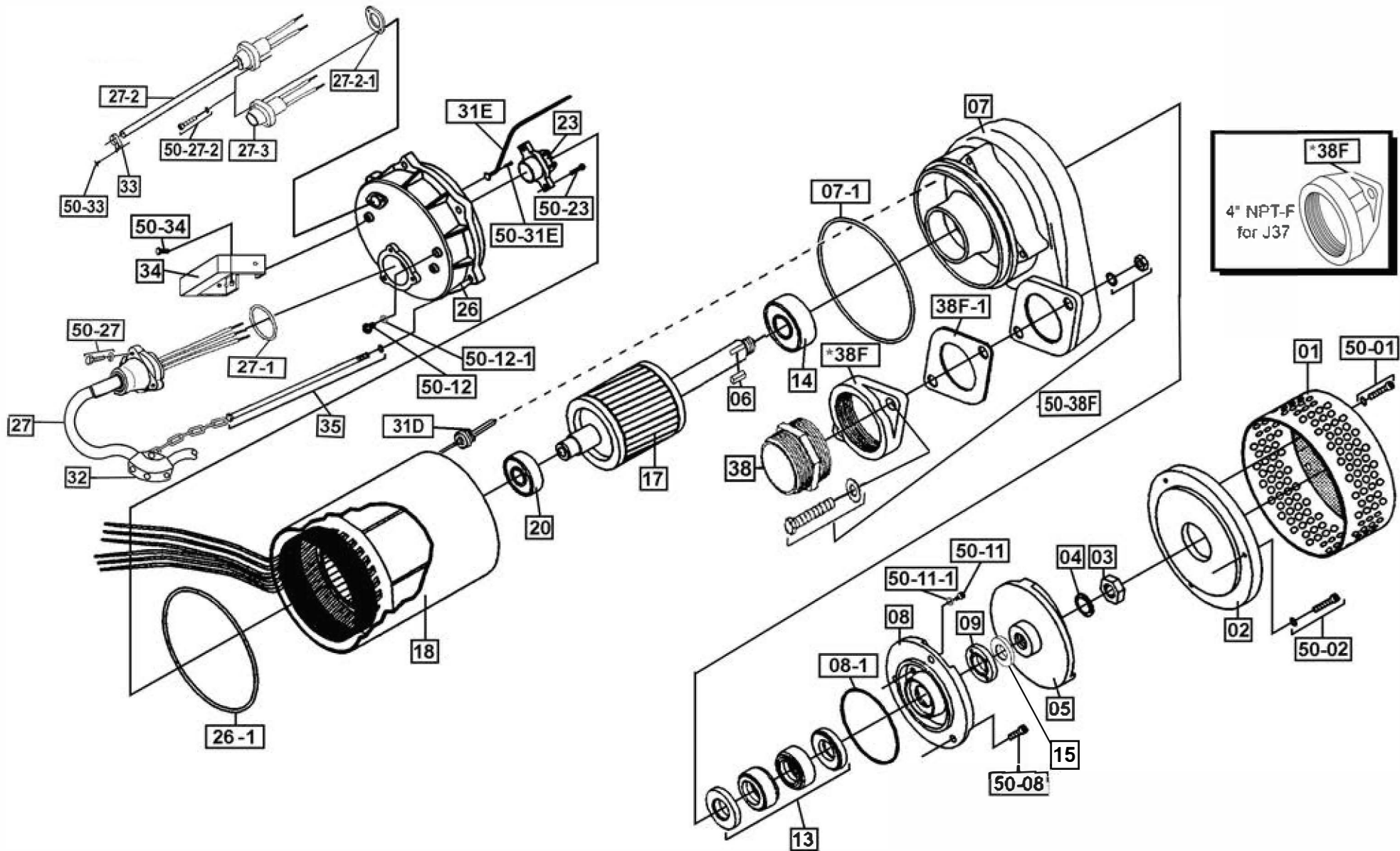
**All 1 HP and up BJM mechanical seal elastomer material is FKM

Seal Minder® is a registered trademark of Industrial Flow Solutions Operating, LLC. All rights reserved.
© 2020 Industrial Flow Solutions Operating, LLC. All rights reserved.

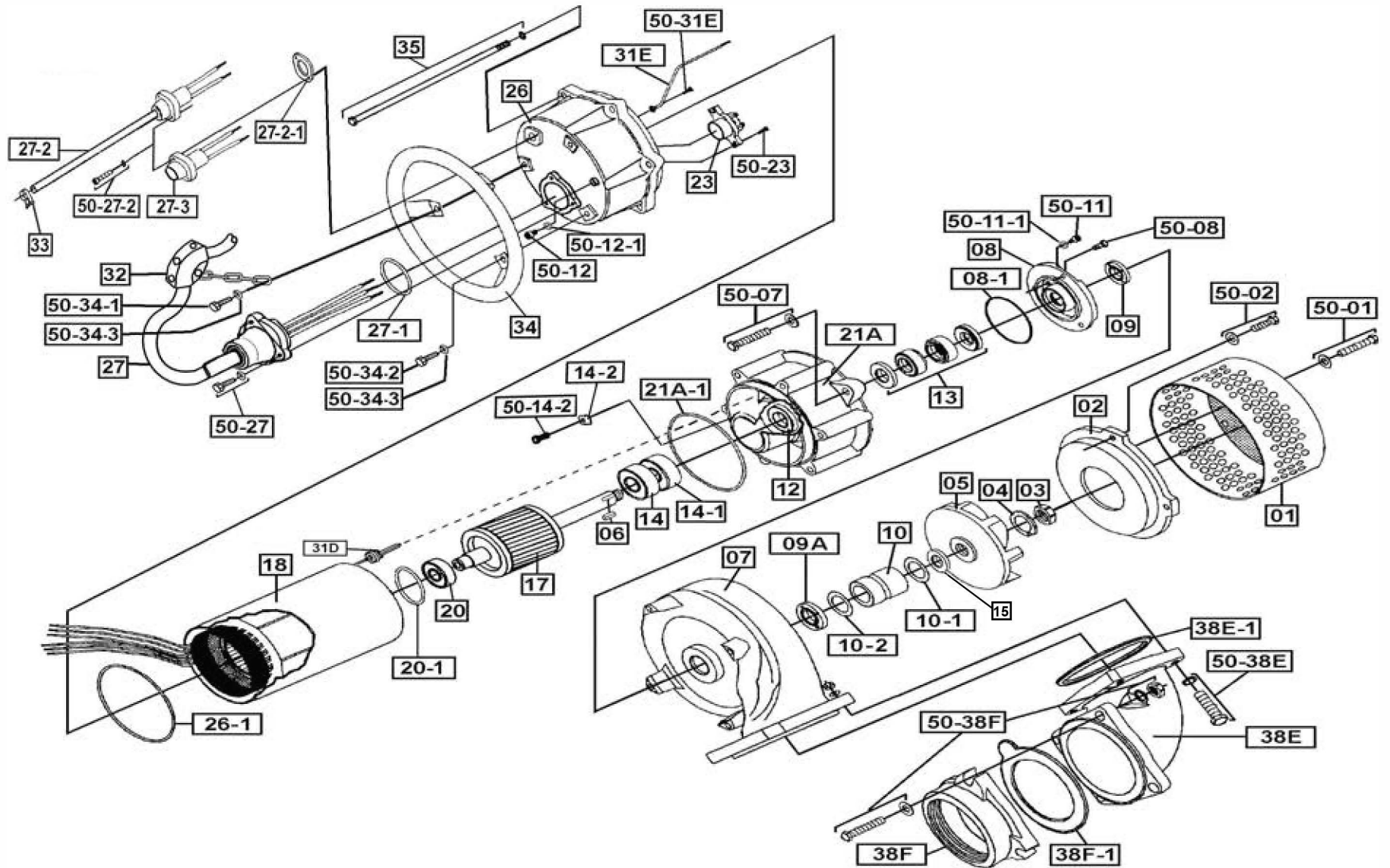




NOTE: Seal Minder (Pos# 27-2, 33, 50-33) is an optional component. J-Series pumps come with Seal Minder Cap only (Pos# 27-3)



NOTE: Seal Minder (Pos# 27-2, 33, 50-33) is an optional component. J-Series pumps come with Seal Minder Cap only (Pos# 27-3)



NOTE: Seal Minder (Pos# 27-2, 33, 50-33) is an optional component. J-Series pumps come with Seal Minder Cap only (Pos# 27-3)

J150

