

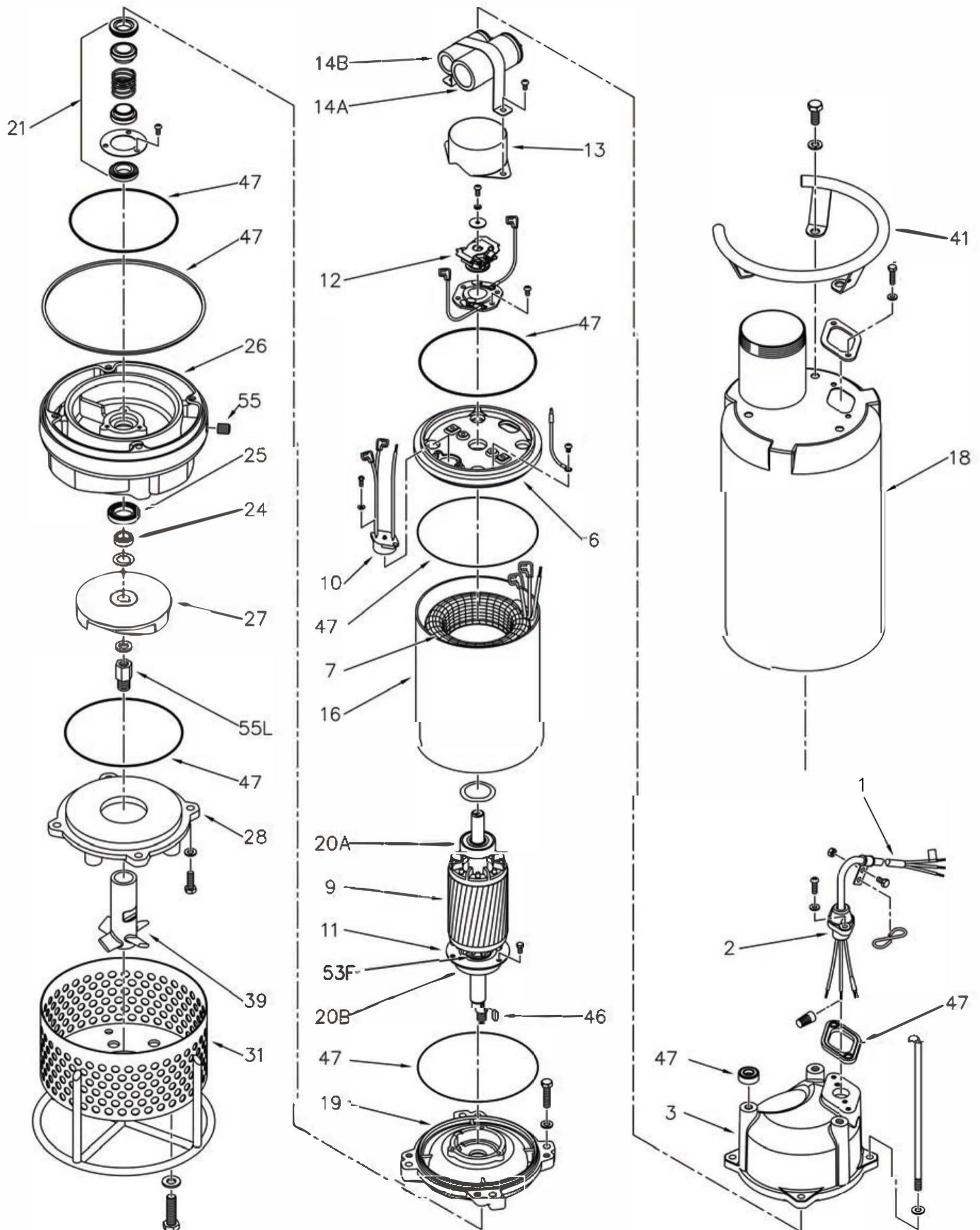
LWA-LWAE SERIES

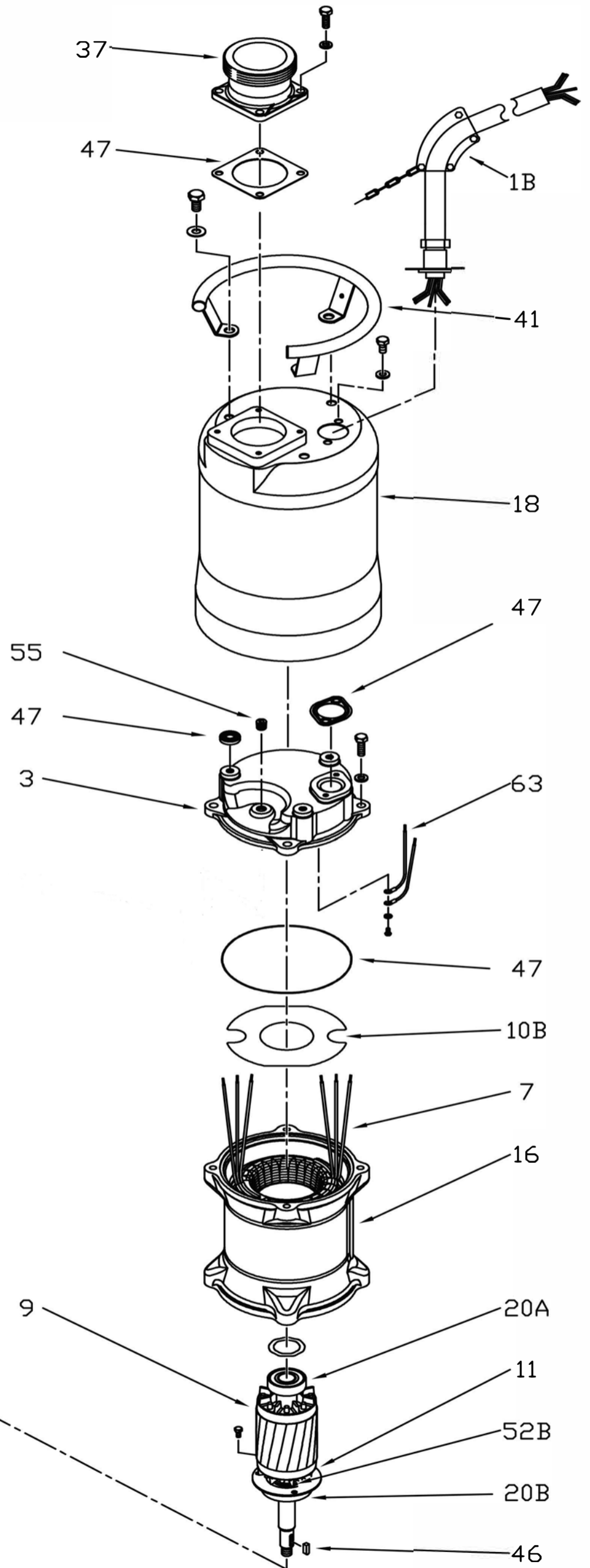
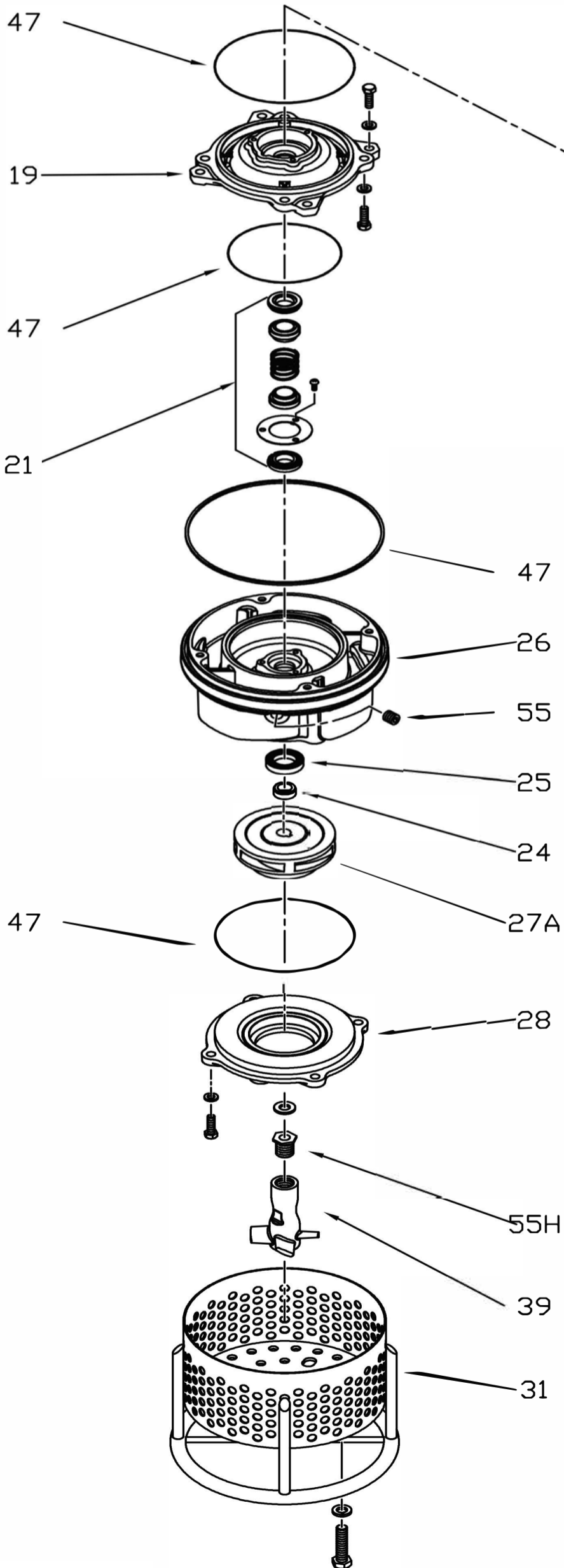
Pos. No.	Part Description	Pump Model	LWAE1500	LWAE2200	LWAE15	LWAE22	LWAE37	LWA55	LWA55H	LWA75	LWA75H
			Item #	Item #	Item #	Item #	Item #	Item #	Item #	Item #	Item #
1	CABLE, POWER, SJOW, 12/4 - 15M, LWA 2200		-	200099	-	-	-	-	-	-	-
1	CABLE, POWER, SJOW, 14/4 - 15M, LWA 1500		200100	-	-	-	-	-	-	-	-
1B	CABLE, POWER, ASSY., SOOW 14-5, 230, 460, 575V		-	-	204225	204225		-	-	-	-
1B	CABLE, POWER, ASSY., SOOW 12-5, 230, 460, 575V		-	-	-	-	200289	-	-	-	-
1B	CABLE, POWER, ASSY., SOOW 12-5, 460, 575V		-	-	-	-	-	-	-	200289	200289
1B	CABLE, POWER, ASSY., SOOW 10-5, 230, 460, 575V		-	-	-	-	-	200062	200062	-	-
2	BASE, CABLE		200087	200087	-	-	-	-	-	-	-
3	COVER, MOTOR HOUSING, CI		204268	204268	204269	204269	204270	200107	200107	200107	200107
6	BRACKET, LWA1500-2200		204271	204271	-	-	-	-	-	-	-
7	STATOR, 2HP, 230/1/60, 3600 RPM, CLASS F		204272	-	-	-	-	-	-	-	-
7	STATOR, 2HP, 230/460/3/60, 3600 RPM, CLASS F		-	-	204274	-	-	-	-	-	-
7	STATOR, 2HP, 575/3/60, 3600 RPM, CLASS F		-	-	204275	-	-	-	-	-	-
7	STATOR, 3HP, 230/1/60, 3600 RPM, CLASS F		-	204273	-	-	-	-	-	-	-
7	STATOR, 3HP, 230/460/3/60, 3600 RPM, CLASS F		-	-	-	204276	-	-	-	-	-
7	STATOR, 3HP, 575/3/60, 3600 RPM, CLASS F		-	-	-	204277	-	-	-	-	-
7	STATOR, 5HP, 230/460/3/60, 3600 RPM, CLASS F		-	-	-	-	204278	-	-	-	-
7	STATOR, 5HP, 575/3/60, 3600 RPM, CLASS F		-	-	-	-	204279	-	-	-	-
7	STATOR, 7.5HP, 230/460/3/60, 3600 RPM, CLASS F		-	-	-	-	-	200164	200164	-	-
7	STATOR, 7.5HP, 575/3/60, 3600 RPM, CLASS F		-	-	-	-	-	200165	200165	-	-
7	STATOR, 10HP, 460/3/60, 3600 RPM, CLASS F		-	-	-	-	-	-	-	200154	200154
7	STATOR, 10HP, 575/3/60, 3600 RPM, CLASS F		-	-	-	-	-	-	-	200155	200155
9	ROTOR, SHAFT ASSY., 2HP, 1 PHASE, 304 SS		204280	-	-	-	-	-	-	-	-
9	ROTOR, SHAFT ASSY., 2HP, 3 PHASE, 304 SS		-	-	204282	-	-	-	-	-	-
9	ROTOR, SHAFT ASSY., 3HP, 1 PHASE, 304 SS		-	204281	-	-	-	-	-	-	-
9	ROTOR, SHAFT ASSY., 3HP, 3 PHASE, 304 SS		-	-	-	204283	-	-	-	-	-
9	ROTOR, SHAFT ASSY., 5HP, 3 PHASE, 304 SS		-	-	-	-	204284	-	-	-	-
9	ROTOR, SHAFT ASSY., 7.5-10HP, 3 PHASE, 304 SS		-	-	-	-	-	200147	200147	200182	200182
10	SWITCH, OVERLOAD 3HP, 230V, 1PH, LWA2200		-	204309	-	-	-	-	-	-	-
10	SWITCH, OVERLOAD 2HP, 230V, 1PH		204308	-	-	-	-	-	-	-	-
10B	PLATE, OVERLOAD SWITCH		-	-	-	-	-	200134	200134	200134	200134
11	RETAINER, BEARING		200139	200139	200139	200139	204285	200141	200141	200141	200141
12	SWITCH, CENTRIFUGAL		204286	24286	-	-	-	-	-	-	-
13	COVER, CENTRIFUGAL SWITCH, LWA 1500-2200		200104	200104	-	-	-	-	-	-	-
14A	CAPACITOR, RUN, LWA 1500-2200		204318	204318	-	-	-	-	-	-	-
14B	CAPACITOR, START		200102	204319	-	-	-	-	-	-	-
16	FRAME, MOTOR		204287	204288	204287	204287	204288	200116	200116	200116	200116
18	HOUSING, OUTER W/ 3" NPT DISCH, 304SS		-	-	-	-	-	-	-	-	-
18	HOUSING, OUTER, 304SS		204289	204290	204291	204291	204292	200122	200122	200122	200122
19	BRACKET, BEARING		204293	204293	204293	204293	204294	200094	200094	200094	200094
20A	BEARING, UPPER, LWA		200088	200088	200088	200088	200088	200959	200959	200959	200959
20B	BEARING, LOWER, LWA		200959	200959	200959	200959	200968	200963	200963	200963	200963
21	SEAL, MECH., SI/SI X CARB/CER		204295	204295	204295	204295	204295	200153	200153	200153	200153
24	BUSHING, LIP SEAL, 304SS		200096	200096	200096	200096	200096	200098	200098	200098	200098
25	SEAL, LIP		204296	204296	204296	204296	204296	200150	200150	200150	200150

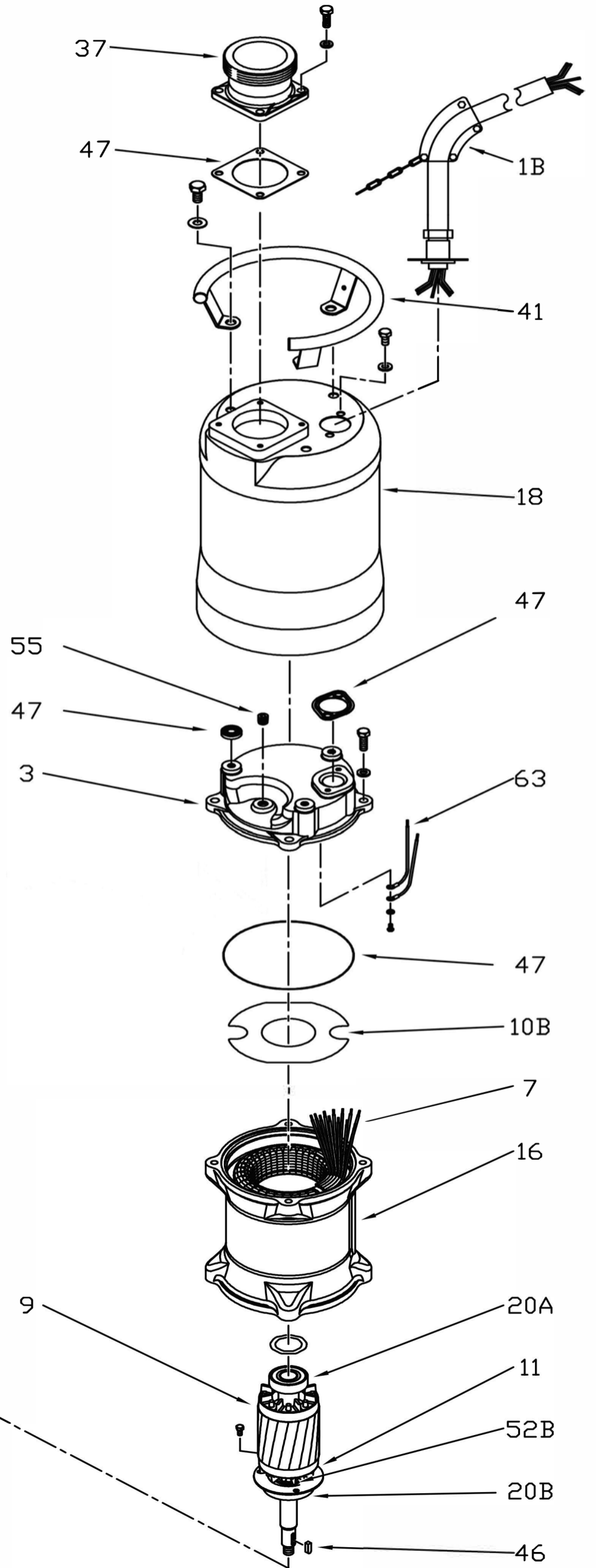
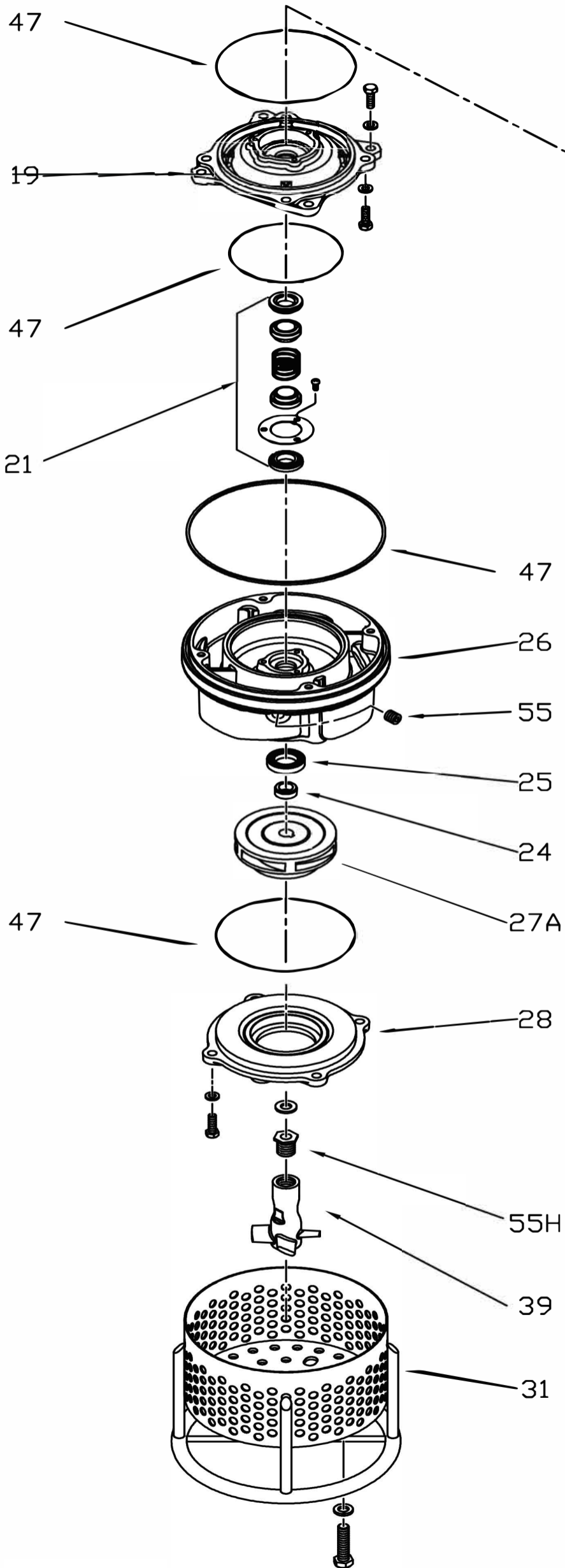
**All 1 HP and up BJM mechanical seal
elastomer material is FKM

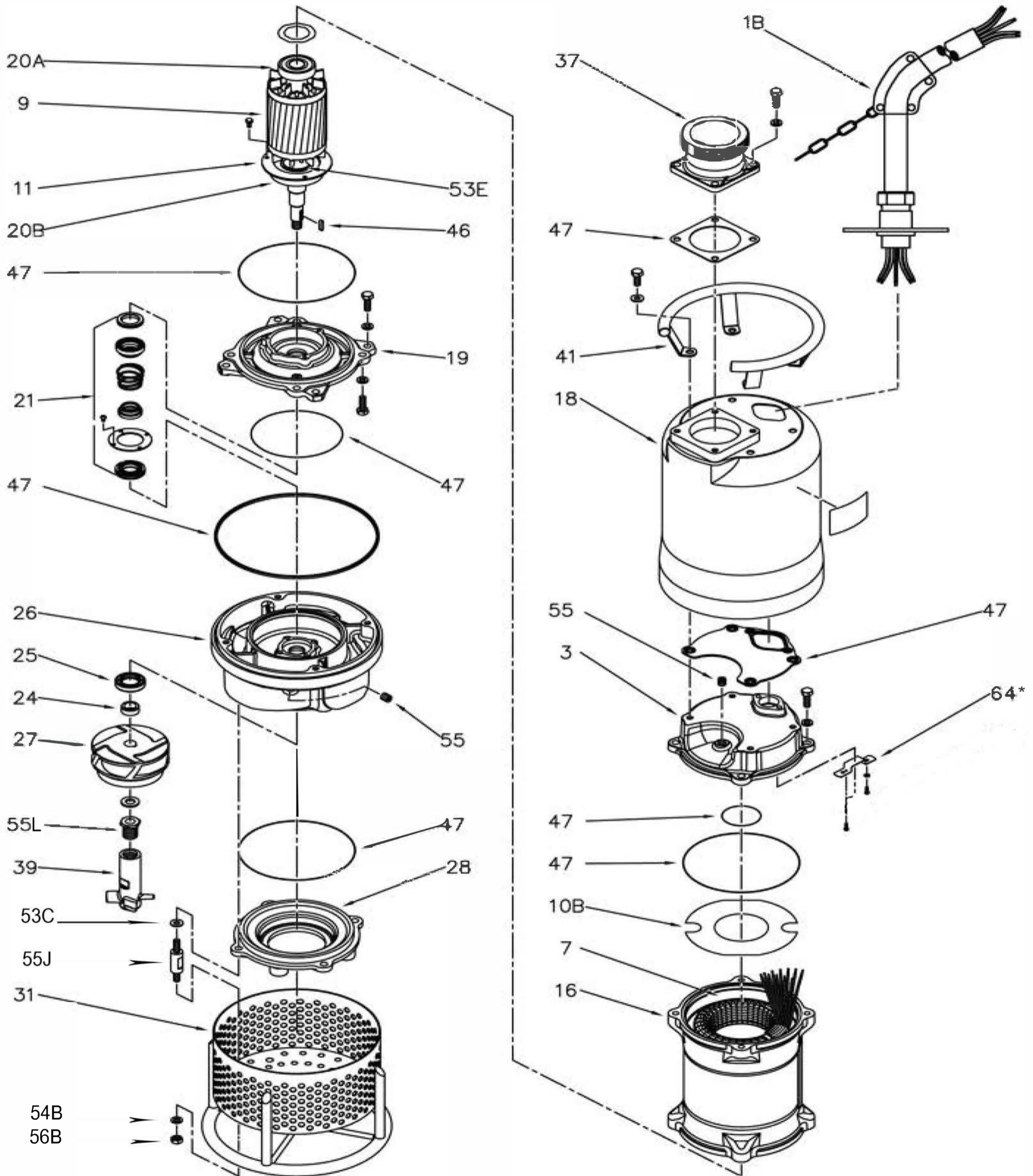
LWA-LWAE SERIES

Pos. No.	Part Description	Pump Model	LWAE1500	LWAE2200	LWAE15	LWAE22	LWAE37	LWA55	LWA55H	LWA75	LWA75H
			Item #	Item #	Item #	Item #	Item #	Item #	Item #	Item #	Item #
26	VOLUTE, HARDENED DI		204297	204297	204297	204297	204297	200190	200190	200190	200190
27	IMPELLER, HI CHROME CI		204298	204299	204298	204299	204300	200128	200127	200129	200126
28	COVER, SUCTION, HARDENED DI		-	-	-	-	-	-	200112	-	-
28	COVER, SUCTION WITH WEAR RING PRESSED		204301	204301	204301	204301	204301	200111	-	200110	200111
29	PLATE, WEAR HI CHROME CI		-	-	-	-	-	-	200136	-	-
31	STRAINER, BOTTOM COVER		204302	204302	204302	204302	204302	200168	200168	200168	200168
37	ADAPTER, DISCHARG, 3", MALE NPT		200083	200083	200083	200083	200083	-	200083	-	-
37	ADAPTER, DISCHARGE, 4" MALE NPT		-	-	-	-	-	200082	-	-	200082
37	ADAPTER, DISCHARGE, 6" MALE NPT		-	-	-	-	-	-	-	200084	-
39	AGITATOR, HARDENED DI		204303	204303	204303	204303	204303	200086	200086	200086	200086
41	HANDLE, LIFT		204304	204304	204304	204304	204304	200118	200118	200118	200118
46	KEY, IMPELLER		204305	204305	204305	204305	204305	200131	200131	200131	200131
47	KIT, O-RING		204306	204306	204307	204307	204307	200213	200213	200213	200213
53C	WASHER, FLAT		-	-	-	-	-	202910	202910	202910	202910
53E	SPACER WASHER (LOWER BEARING)		-	-	-	-	-	200997	200997	200997	200997
53F	SPACER WASHER (LOWER BEARING)		204320	204320	204320	204320	200996	-	-	-	-
54B	WASHER, LOCK		-	-	-	-	-	202909	202909	202909	202909
55	PLUG, OIL, LWA		200138	200138	200138	200138	200138	200138	200138	200138	200138
55H	STUB, AGITATOR JOINT		-	-	204321	204321	204321	-	-	200170	200170
55J	STUD		-	-	-	-	-	202814	202814	202814	202814
55L	STUB, AGITATOR JOINT		204321	204321	-	-	-	200170	200170	-	-
56B	NUT		-	-	-	-	-	202899	202899	202899	202899
64	BRACKET, OVERLOAD (460V & 575V MOTOR ONLY)		-	-	-	-	-	203376	203376	203376	203376

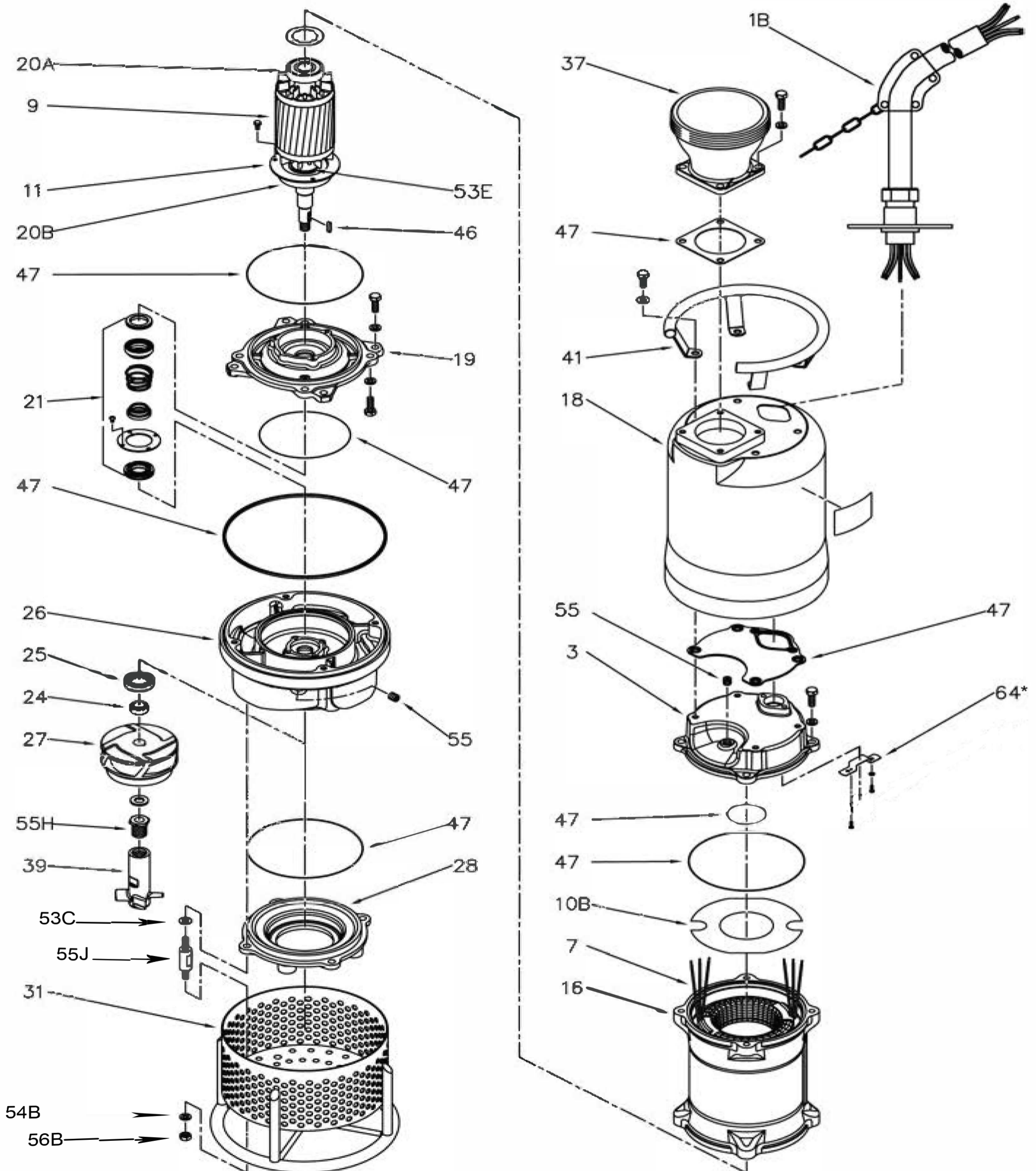








* 460 & 575V motors only



* 460 & 575V motors only