



BJM Pumps® SKF HIGH TEMP SERIES

	Pump Model	SK1500CF
Pos. No.	Part Description	Item #
01-2	Stand Only	202858
02	Suction Cover, Hi-Chrome	202046
05	Impeller, Heat Treated DI*	204565
07	Pump Housing	203008
08	Oil Chamber Cover	202213
08-1	O-Ring (Kit Only)	Kit
09	Lip Seal FKM	202232
13	Mechanical Seal FKM	204240
14	Lower Ball Bearing	205999
14-2	Lower Bearing Retainer	202279
15	Impeller Shim Kit (Required)	200481
17	Rotor w/ Shaft 230V, 1PH	204734
18	Stator w/ Casing 230V, 1PH (High-Temp)	201040
19	Wire Connection Kit*	204211
20	Upper Ball Bearing	206000
21A	Oil Chamber/Motor Housing	202196
21A-1	O-Ring (Kit Only)	Kit
21B	Motor Cover Upper	202368
26	Pump Top Cover (w/ Sensor Opening)	202433
26-1	O-Ring Kit Only	Kit
27	Power Cable w/ Gland- 230V,1PH (High-Temp)	202783
27-1	O-Ring Kit Only	Kit
27-2	Seal Minder Cable (High-Temp)	204455
27-2-1	O-Ring Kit Only	Kit
31D	Seal Minder Probe	202408
31E	Ground Wire w/Ring Term.	203145
32	Power Cord Line Clip / Strain Relief	203161
33	Seal Minder Cable Line Clip	203163
34	Handle / Chain Handle	202517
35	Rod Bolts	202668
38	Discharge Nipple 3"	202534
38E	Discharge Elbow	202558
38E-1	Gasket, Disch. Elbow FKM	203209
38F	Discharge Flange 3"	202545
38F-1	Gasket, Disch. Flange FKM	202660
50-01-2	Bolt for Strainer/Stand	203228
50-02	Bolt for Suction Cover	203228
50-07	Screw for Oil Chamber/Motor Housing	203228
50-08	Screw for Oil Chamber Cover	203219
50-11	Bolt - Suction Cover	203218
50-11-1	O-Ring (Kit Only)	Kit
50-12	Screw for Pressure Check	203218
50-12-1	O-Ring (Kit Only)	Kit
50-14-2	Screw for Brg. Retainer	203219
50-27	Screw for Power Cord	203216
50-27-2	Screw for Seal Minder Cable	203216
50-31E	Screw for Ground Wire	202692
50-32/50-33	Screw for Line Clip	203214
50-34	Screw for Handle	203219
50-38E	Bolt for Discharge Elbow	203255
50-38F	Bolt for Discharge Flange	203289
	O-Ring Kit - FKM	203197

****F" Series High Temperature Pumps Only**

***New Rotor With Shaft Required When Upgrading From 202953 Impeller to 204565 Impeller.**

Last updated on 3/25/2024

BJM Pumps® SKF HIGH TEMP SERIES

	Pump Model	SK08CF	SK15CF	SK22CF	SK37CF	SK55CF	SK75CF	SK110CF	SK150CF
Pos. No.	Part Description	Item #	Item #	Item #	Item #	Item #	Item #	Item #	Item #
01-2	Stand Only	202847	202858	202850	202855	201998	201998	202000	202000
	Suction Cover, Cast Iron	-	-	-	-	202880	202880	202882	202882
02	Suction Cover, Hi-Chrome	202045	202046	202047	202048	-	-	-	-
03	Impeller Nut	202894	202894	202894	202894	202897	202897	202897	202897
04	Impeller Washer	202907	202907	202907	202907	202917	202917	202917	202917
05	Impeller, Heat Treated DI	202956	204565	204566	204567	202136	202138	202945	202947
06	Impeller Key	202140	202140	202140	202140	202146	202146	202146	202987
07	Pump Housing	202173	203008	203011	203014	203024	203024	203027	203027
08	Oil Chamber Cover	202213	202213	202218	202218	202221	202221	202223	202223
08-1	O-Ring (Kit Only)	Kit	Kit	Kit	Kit	Kit	Kit	Kit	Kit
09	Lip Seal FKM	202232	202232	202235	202235	202241	202241	202241	202241
13	Mechanical Seal FKM	204240	204240	204243	204243	200307	200307	200307	200307
13-2	Mechanical Seal Retainer	-	-	-	-	202273	202273	202273	202273
14	Lower Ball Bearing (* =Qty 2 Needed)	205999	205999	206016	206016	206020	206020	206020*	206020*
14-2	Lower Bearing Retainer	202279	202279	202279	202279	203075	203075	203076	203076
14-3	Lock Nut & Lock Washer	-	-	-	-	-	-	200424	200424
15	Impeller Shim Kit (Required)	200480	200480	200480	200480	200478	200478	200478	200478
17	Rotor w/ Shaft, 3PH	204031	204032	204033	204034	204035	204036	204037	204038
18	Stator w/ Casing 208V, 3PH	200525	200529	200533	200537	200670	-	-	-
18	Stator w/ Casing 230/460V, 3PH	200547	200551	200555	200559	200573	200577	200581	-
18	Stator w/ Casing 460V, 3PH	-	-	-	-	-	-	-	200585
18	Stator w/ Casing 575V, 3PH	200589	200593	200597	200601	200617	200623	200630	200637
19	Wire Connection Kit*	204202	204202	204203	204203	204203	204203	CTF	CTF
20	Upper Ball Bearing	206000	206000	205999	205999	206017	206017	206017	206017
20-1	O-Ring (Kit Only)	-	-	-	-	Kit	Kit	Kit	Kit
21A	Oil Chamber/Motor Housing	202196	202196	203030	203030	202199	202199	203032	203032
21A-1	O-Ring (Kit Only)	Kit	Kit	Kit	Kit	Kit	Kit	Kit	Kit
26	Pump Top Cover (w/ Sensor Opening)	202435	202435	202437	202437	203129	203129	203132	203132
26-1	O-Ring Kit Only	Kit	Kit	Kit	Kit	Kit	Kit	Kit	Kit
27	Power Cable w/ Gland- 3PH(high temp)	204452	204452	203776	203776	203776	203776	203778	203778
27-1	O-Ring Kit Only	Kit	Kit	Kit	Kit	Kit	Kit	Kit	Kit
27-2	Seal Minder/Temp. Sensor Cord (High Temp)	204453	204453	204453	204453	204453	204453	204453	204453
27-2-1	O-Ring Kit Only	Kit	Kit	Kit	Kit	Kit	Kit	Kit	Kit
31D	Seal Minder Probe	202408	202408	202410	202410	204001	204001	204001	204001

Last updated on 3/25/2024



BJM Pumps® SKF HIGH TEMP SERIES

	Pump Model	SK08CF	SK15CF	SK22CF	SK37CF	SK55CF	SK75CF	SK110CF	SK150CF
Pos. No.	Part Description	Item #	Item #	Item #	Item #	Item #	Item #	Item #	Item #
31E	Ground Wire w/Ring Term.	203145	203145	203145	203145	203145	203145	203145	203145
32	Power Cord Line Clip / Strain Relief	203161	203161	202497	202497	202497	202497	202500	202500
33	Seal Minder Sensor Cord Line Clip	203163	203163	203163	203163	203163	203163	203163	203163
34	Handle / Chain Handle	202517	202517	202509	202509	-	-	-	-
34	Bolt - Suction Cover	-	-	-	-	203172	203172	203172	203172
35	Rod Bolts	202669	202670	202671	202672	202676	202677	202678	202679
38	Discharge Nipple 2"	202531	-	-	-	-	-	-	-
38	Discharge Nipple 3"	-	202534	202534	202534	-	-	-	-
38E	Discharge Elbow	202570	202558	202558	202558	202818	202572	203187	203187
38E-1	Gasket, Disch. Elbow FKM	203213	203209	203209	203209	203211	203211	202664	202664
38F	Discharge Flange 2"	202562	-	-	-	-	-	-	-
38F	Discharge Flange 3"	-	202545	202545	202545	-	-	-	-
38F	Discharge Flange 4"	-	-	202552	202552	202575	202575	-	-
38F	Discharge Flange 6" ANSI Slip Weld	-	-	-	-	-	-	202548	202548
38F-1	Gasket, Disch. Flange FKM	203207	202660	202660	202660	202662	202662	202664	202664
50-01-2	Bolt for Strainer/Stand	203228	203228	203228	203228	203236	203236	203279	203279
50-02	Bolt for Suction Cover	203228	203228	203228	203228	203236	203236	203279	203279
50-07	Screw for Oil Chamber/Motor Housing	203228	203228	203228	203228	203271	203271	203280	203280
50-08	Screw for Oil Chamber Cover	203219	203219	203219	203219	203246	203246	203281	203281
50-11	Screw for Oil Fill	203218	203218	203218	203218	203261	203261	203282	203282
50-11-1	O-Ring (Kit Only)	Kit	Kit	Kit	Kit	Kit	Kit	Kit	Kit
50-11V	Air Release Valve	-	-	-	-	202707	202707	202707	202707
50-12	Screw for Pressure Check	203218	203218	203218	203218	203218	203218	203218	203218
50-12-1	O-Ring (Kit Only)	Kit	Kit	Kit	Kit	Kit	Kit	Kit	Kit
50-13-2	Screw for Seal Retainer	-	-	-	-	203214	203214	203214	203214
50-14-2	Screw for Brg. Retainer	203219	203219	203219	203219	203220	203220	203220	203220
50-27	Screw for Power Cord	203216	203216	203246	203246	203246	203246	203246	203246
50-27-2	Screw for Seal Minder Cable	203216	203216	203216	203216	203216	203216	203216	203216
50-31E	Screw for Ground Wire	202692	202692	202692	202692	202692	202692	202692	202692
50-32/50-33	Screw for Line Clip	203214	203214	-	-	-	-	-	-
50-32-1	Bolt for Power Cord Chain	-	-	-	-	203284	203284	203284	203284
50-34	Screw for Handle	203219	203219	-	-	-	-	-	-
50-38E	Bolt for Discharge Elbow	203253	203255	203255	203255	203276	203276	203278	203278
50-38F	Bolt for Discharge Flange	203289	203289	203289	203253	203277	203277	203278	203278
O-Ring Kit - FKM		202646	202646	202641	202641	202652	202652	203202	203202

****F" Series High Temperature Pumps Only**

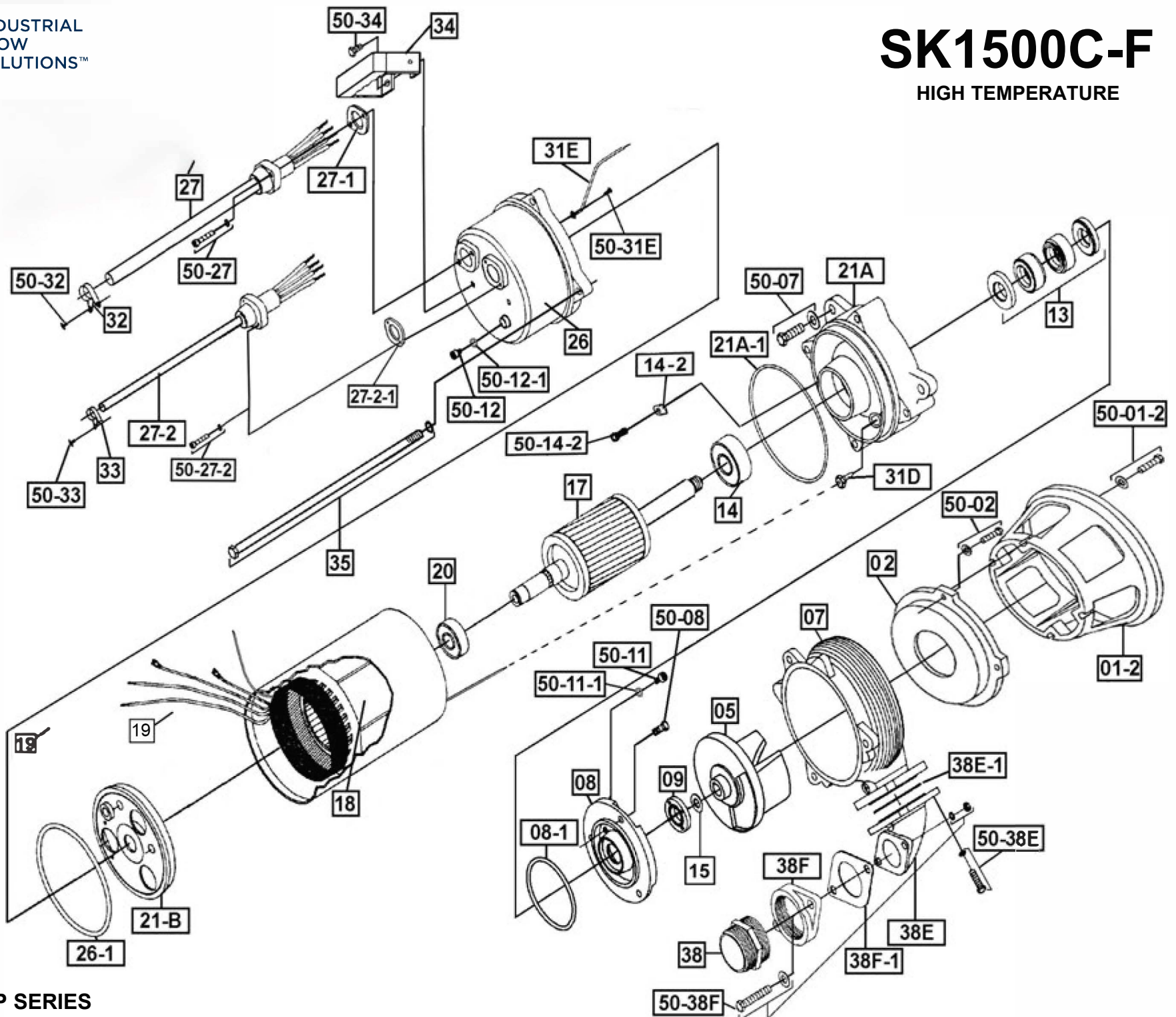
Last updated on 3/25/2024



INDUSTRIAL
FLOW
SOLUTIONS™

SK1500C-F

HIGH TEMPERATURE



BJM Pumps®
SKF HIGH TEMP SERIES

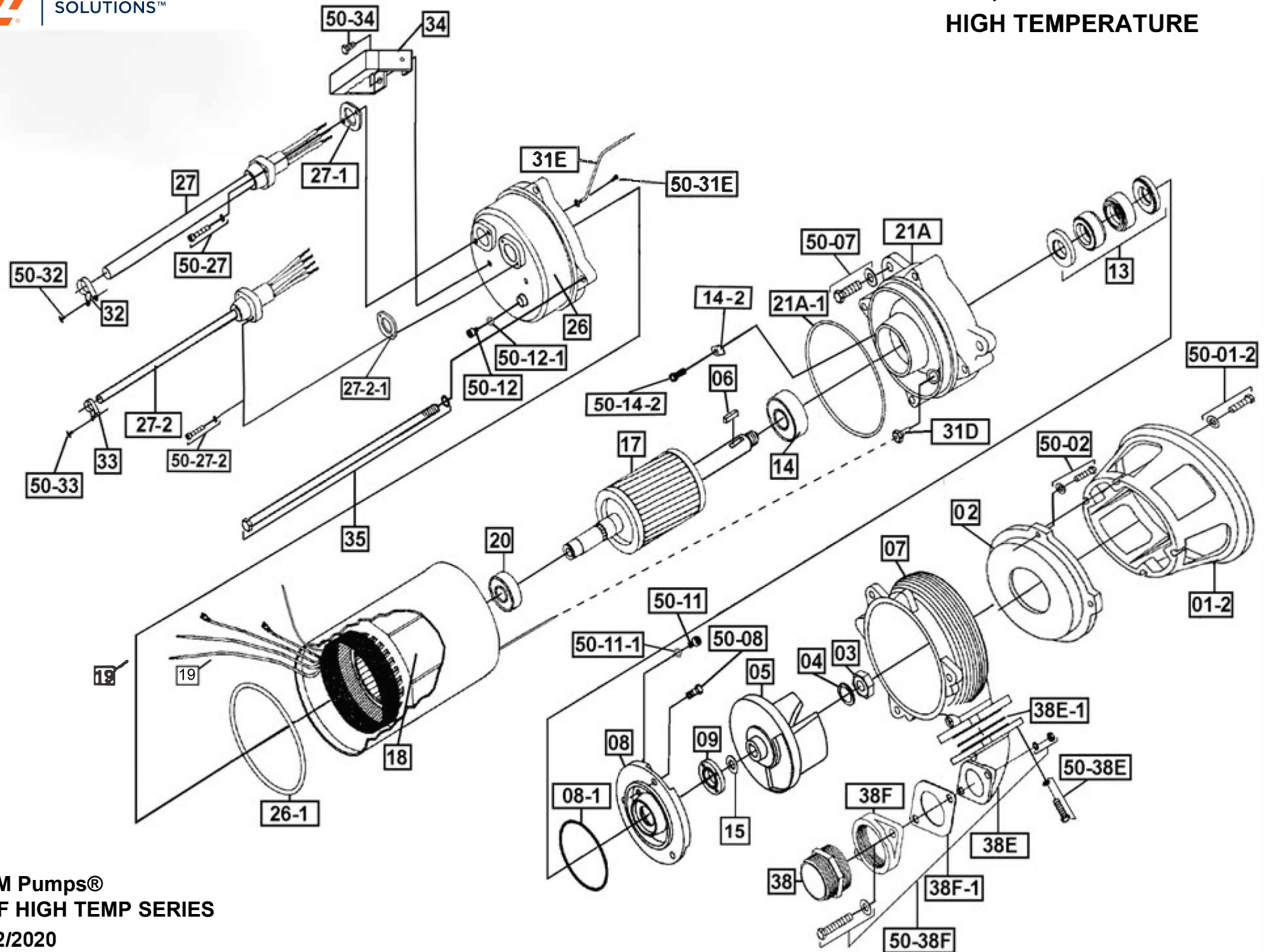
5/12/2020

CAT ID# XVIEW SK1500CF



SK08CF, SK15CF

HIGH TEMPERATURE

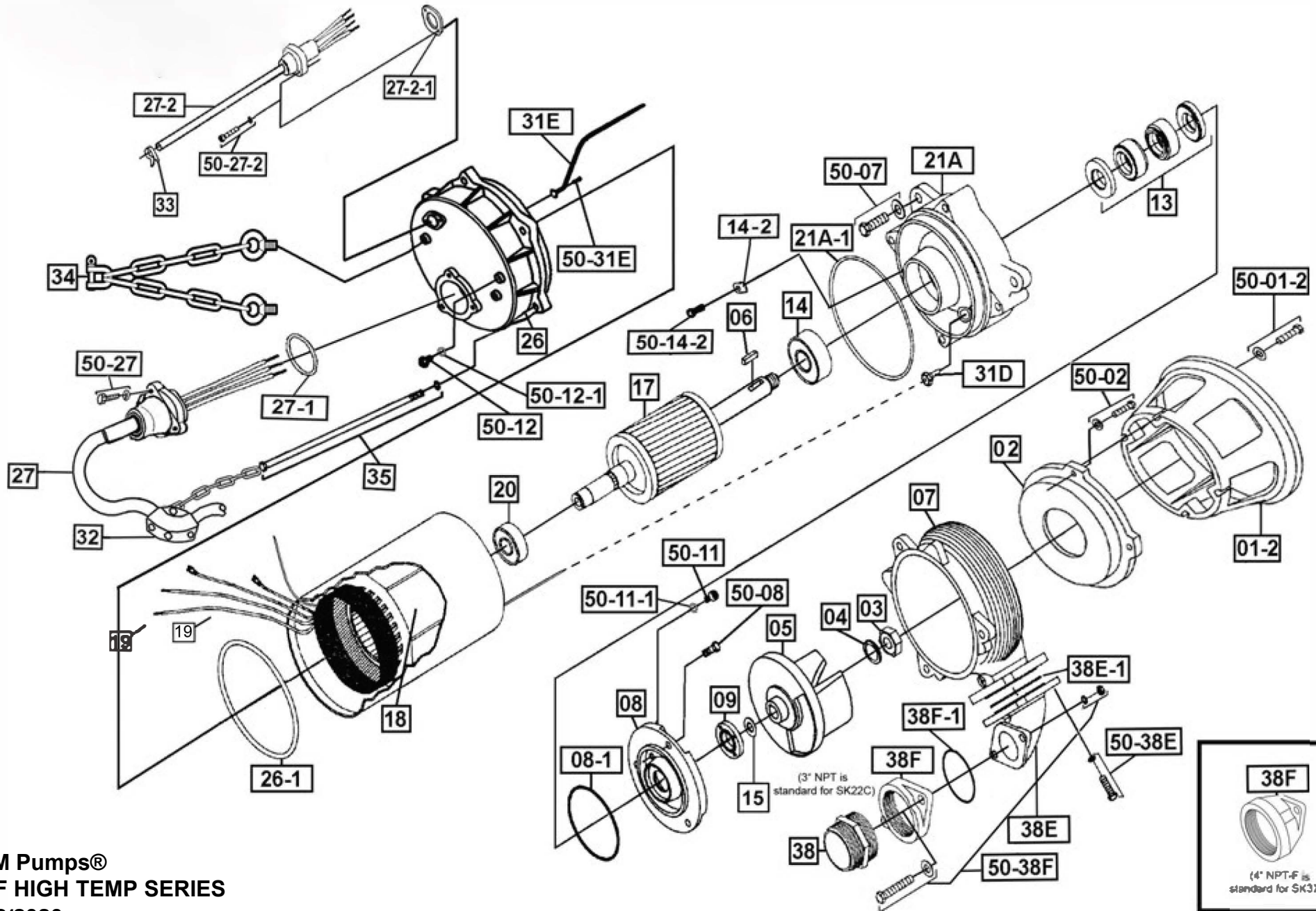




INDUSTRIAL
FLOW
SOLUTIONS™

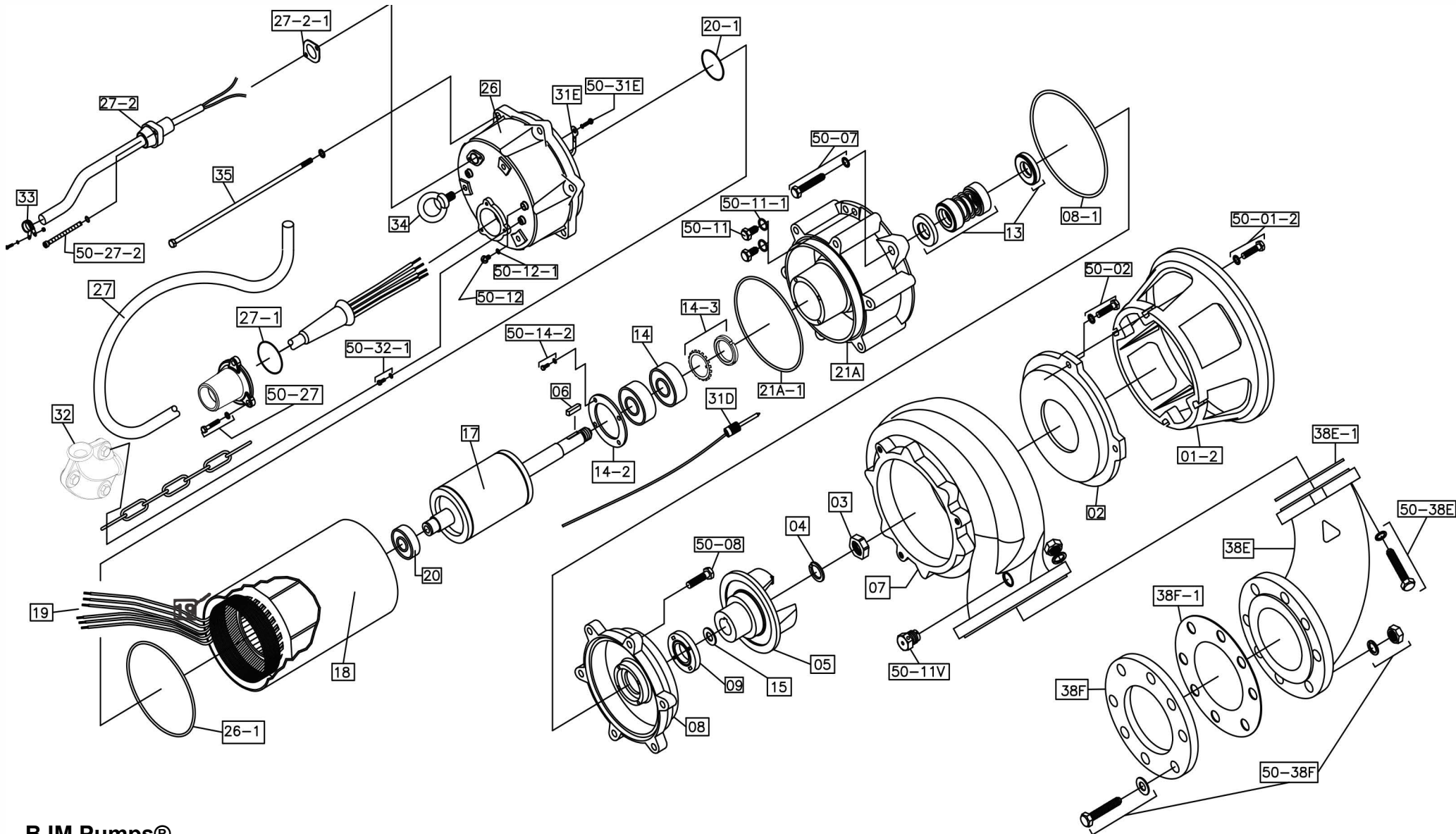
SK22CF, SK37CF

HIGH TEMPERATURE



BJM Pumps®
SKF HIGH TEMP SERIES
5/12/2020

CAT ID# XVIEW SK22CF- SK37CF



BJM Pumps®
SKF HIGH TEMP SERIES