



BJM Pumps® SXF HIGH TEMP SERIES

Pos. No.	Part Description	Pump Model	SX750CSSF	SX1500CSSF
		Item #	Item #	Item #
01-2	Stand	201985	201987	
05	Impeller**	202095	204631	
07	Pump Housing	202176	202172	
07-1	O-Ring (Kit Only)	Kit	Kit	
08	Oil Chamber Cover	202214	202214	
08-1	O-Ring (Kit Only)	Kit	Kit	
09	Lip Seal FKM	202232	202232	
13	Mechanical Seal FKM	204240	204240	
14	Lower Ball Bearing	205999	205999	
14-2	Lower Bearing Retainer	202279	202279	
15	Impeller Shim Kit (Required)	200481	200481	
17	Rotor w/ Shaft 115/230V, 1PH	204061	204735	
18	Stator w/ Casing 115V, 1PH (High-Temp)	201038	-	
18	Stator w/ Casing 230V, 1PH (High-Temp)	201039	201041	
19	Wire Connection Kit*	204211	204211	
20	Upper Ball Bearing	206000	206000	
21A	Oil Chamber/Motor Housing	202197	202197	
21A-1	O-Ring (Kit Only)	Kit	Kit	
21B	Motor Cover Upper	202368	202368	
26	Pump Top Cover (W/ Sensor opening)	202434	202434	
26-1	O-Ring (Kit Only)	Kit	Kit	
27	Power Cable w/ Gland- 115V,1PH (High-Temp)	202783	-	
27	Power Cable w/ Gland-230V, 1PH (High-Temp)	202784	202783	
27-1	O-Ring (Kit Only)	Kit	Kit	
27-2	Sensor Cable (High-Temp)	201743	201743	
27-2-1	O-Ring Kit Only	Kit	Kit	
31D	Seal Minder Probe	202408	202408	
31E	Ground Wire w/Ring Term.	203145	203145	
32	Power Cord Line Clip / Strain Relief	203166	203166	
33	Seal Minder Cable Line Clip	203163	203163	
34	Handle / Chain Handle	202517	202517	
35	Rod Bolts	202682	202683	
38	Discharge Nipple 2"	202532	-	
38	Discharge Nipple 3"	-	202535	
38E	Discharge Elbow	202571	202559	
38E-1	O-Ring, Discharge Elbow FKM	203326	203327	
38F	Discharge Flange 2"	202563	-	
38F	Discharge Flange 3"	-	202546	
38F-1	O-Ring, 2" Discharge Flange FKM	202723	-	
38F-1	Bolt - Suction Cover	-	202724	
50-01-2	Bolt for Strainer/Stand	203228	203228	
50-07	Screw for Oil Chamber/Motor Housing	203296	203296	
50-08	Screw for Oil Chamber Cover	203219	203219	
50-11	Screw for Oil Fill	203218	203218	
50-11-1	O-Ring (Kit Only)	Kit	Kit	
50-12	Screw for Pressure Check	203218	203218	
50-12-1	O-Ring (Kit Only)	Kit	Kit	
50-14-2	Screw for Bearing Retainer	203219	203219	
50-27	Screw for Power Cord	203295	203295	
50-27-2	Screw for Seal Minder Cable	203295	203295	
50-31E	Screw for Ground Wire	202692	202692	
50-32/50-33	Screw for Line Clip	203214	203214	
50-34	Screw for Handle	203219	203219	
50-38E	Bolt for Discharge Elbow	203294	203271	
50-38F	Bolt for Discharge Flange	203229	203294	
O-Ring Kit - FKM		202630	202630	
**New Rotor With Shaft Required When Upgrading From 202097 Impeller to 204631 Impeller				
* "F" Series High Temperature Pumps Only				



BJM Pumps® SXF HIGH TEMP SERIES

	Pump Model	SX08CSSF	SX15CSSF	SX22CSSF	SX37CSSF	SX55CSSF	SX75CSSF
Pos. No.	Part Description	Item #	Item #	Item #	Item #	Item #	Item #
01-2	Stand	201985	201987	201991	201993	201997	201997
02	Bottom Plate	-	-	-	-	202022	202022
03	Impeller Nut	202894	202894	202894	202894	202897	202897
04	Impeller Washer	202907	202907	202907	202907	202917	202917
05	Impeller	202101	204631	204632	204633	202111	202113
06	Impeller Key	202140	202140	202140	202140	202142	202142
07	Pump Housing	202176	202172	202177	202181	202189	202189
07-1	O-Ring (Kit Only)	Kit	Kit	Kit	Kit	-	-
08	Oil Chamber Cover	202214	202214	202219	202219	202217	202217
08-1	O-Ring (Kit Only)	Kit	Kit	Kit	Kit	Kit	Kit
09	Lip Seal FKM	202232	202232	202235	202235	202241	202241
09A	Lower Lip Seal FKM	-	-	-	-	202241	202241
13	Mechanical Seal FKM	204240	204240	204243	204243	200304	200304
14	Lower Ball Bearing	205999	205999	206016	206016	206028	206018
14-1	Lower Ball Bearing	-	-	-	-	206028	206018
14-2	Lower Bearing Retainer	202279	202279	202279	202279	202279	202279
15	Impeller Shim Kit (Required)	200480	200480	200480	200480	200479	200479
17	Rotor w/ Shaft, 3PH	204021	204022	204023	204024	204025	204026
18	Stator w/ Casing 208V, 3PH	200527	200531	200535	200539	200668	-
18	Stator w/ Casing 230/460V, 3PH	200549	200553	200557	200561	200565	200569
18	Stator w/ Casing 575V, 3PH	200591	200595	200599	200603	200608	200612
19	Wire Connection Kit*	204202	204202	204203	204203	204203	204203
20	Upper Ball Bearing	206000	206000	205999	205999	206016	206016
20-1	O-Ring (Kit Only)	-	-	-	-	Kit	Kit
21A	Oil Chamber/Motor Housing	202197	202197	202198	202198	203013	203005
21A-1	O-Ring (Kit Only)	Kit	Kit	Kit	Kit	Kit	Kit
26	Pump Top Cover (W/ Sensor opening)	202436	202436	202438	202438	202440	202440
26-1	O-Ring (Kit Only)	Kit	Kit	Kit	Kit	Kit	Kit
27	Power Cable w/ Gland- 3PH(high temp)	201733	201733	203777	203777	203777	203777
27-1	O-Ring (Kit Only)	Kit	Kit	Kit	Kit	Kit	Kit
27-2	Seal Minder/Temp. Sensor Cord (high temp)	201741	201741	201741	201741	201741	201741
27-2-1	O-Ring Kit Only	Kit	Kit	Kit	Kit	Kit	Kit
31D	Seal Minder Probe	202408	202408	202410	202410	204000	204000
31E	Ground Wire w/Ring Term.	203145	203145	203145	203145	203145	203145

Last updated on 3/25/2024



BJM Pumps® SXF HIGH TEMP SERIES

	Pump Model	SX08CSSF	SX15CSSF	SX22CSSF	SX37CSSF	SX55CSSF	SX75CSSF
Pos. No.	Part Description	Item #	Item #	Item #	Item #	Item #	Item #
32	Power Cord Line Clip / Strain Relief	203161	203161	202499	202499	202499	202499
33	Seal Minder Cable Line Clip	203163	203163	203163	203163	203163	203163
34	Handle / Chain Handle	202517	202517	202510	202510	202516	202516
35	Rod Bolts	202684	202685	202686	202687	202673	202674
38	Discharge Nipple 2"	202532	-	-	-	-	-
38	Bolt - Suction Cover	-	202535	202535	202535	-	-
38E	Discharge Elbow	202571	202559	202559	202559	202561	202561
38E-1	O-Ring, Discharge Elbow FKM	203326	203327	203327	203327	-	-
38E-1	Gasket, Discharge Elbow FKM	-	-	-	-	203211	203211
38F	Discharge Flange 2"	202563	-	-	-	202818	-
38F	Discharge Flange 3"	-	202546	202546	202546	-	-
38F	Discharge Flange 4"	-	-	202553	202553	202540	202540
38F-1	O-Ring, 2" Discharge Flange FKM	202723	-	-	-	-	-
38F-1	O-Ring, 3" Discharge Flange FKM	-	202724	202724	202724	-	-
38F-1	O-Ring, 4" Discharge Flange FKM	-	-	203328	203328	-	-
38F-1	Gasket, 4" Discharge Flange FKM	-	-	-	-	203211	203211
50-01-2	Bolt for Strainer/Stand	203228	203228	203228	203228	203229	203229
50-02	Bolt for Suction Cover	-	-	-	-	203229	203229
50-07	Screw for Oil Chamber/Motor Housing	203296	203296	203296	203296	203229	203229
50-08	Screw for Oil Chamber Cover	203219	203219	203219	203219	203246	203246
50-11	Screw for Oil Fill	203218	203218	203218	203218	203218	203218
50-11-1	O-Ring (Kit Only)	Kit	Kit	Kit	Kit	Kit	Kit
50-12	Screw for Pressure Check	203218	203218	203218	203218	203218	203218
50-12-1	O-Ring (Kit Only)	Kit	Kit	Kit	Kit	Kit	Kit
50-14-2	Screw for Bearing Retainer	203219	203219	203219	203219	203219	203219
50-27	Screw for Power Cord	203295	203295	203246	203246	203246	203246
50-27-2	Screw for Seal Minder Cable	203295	203295	203295	203295	203295	203295
50-31E	Screw for Ground Wire	202692	202692	202692	202692	202692	202692
50-32/50-33	Screw for Line Clip	203214	203214	-	-	-	-
50-34	Screw for Handle	203219	203219	-	-	-	-
50-34-3	Lock Washer	-	-	-	-	202902	202902
50-38E	Bolt for Discharge Elbow	203294	203271	203271	203271	203286	203286
50-38F	Bolt for Discharge Flange	203229	203294	203294	203294	203287	203287
O-Ring Kit - FKM		202647	202647	202642	202642	202644	202644
* "F" Series High Temperature Pumps Only							

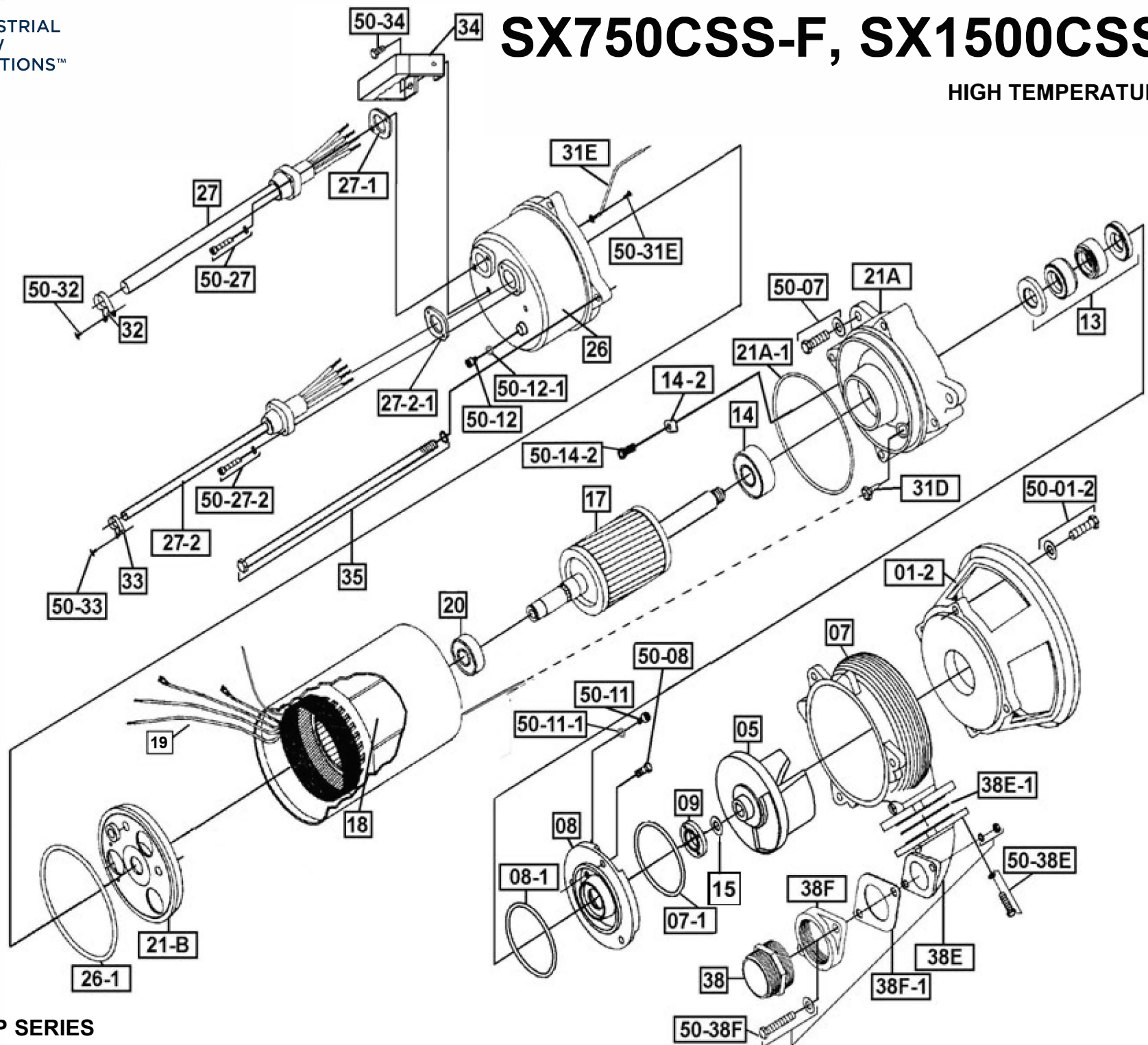
Last updated on 3/25/2024



INDUSTRIAL
FLOW
SOLUTIONS™

SX750CSS-F, SX1500CSS-F

HIGH TEMPERATURE



BJM Pumps®
SLF HIGH TEMP SERIES

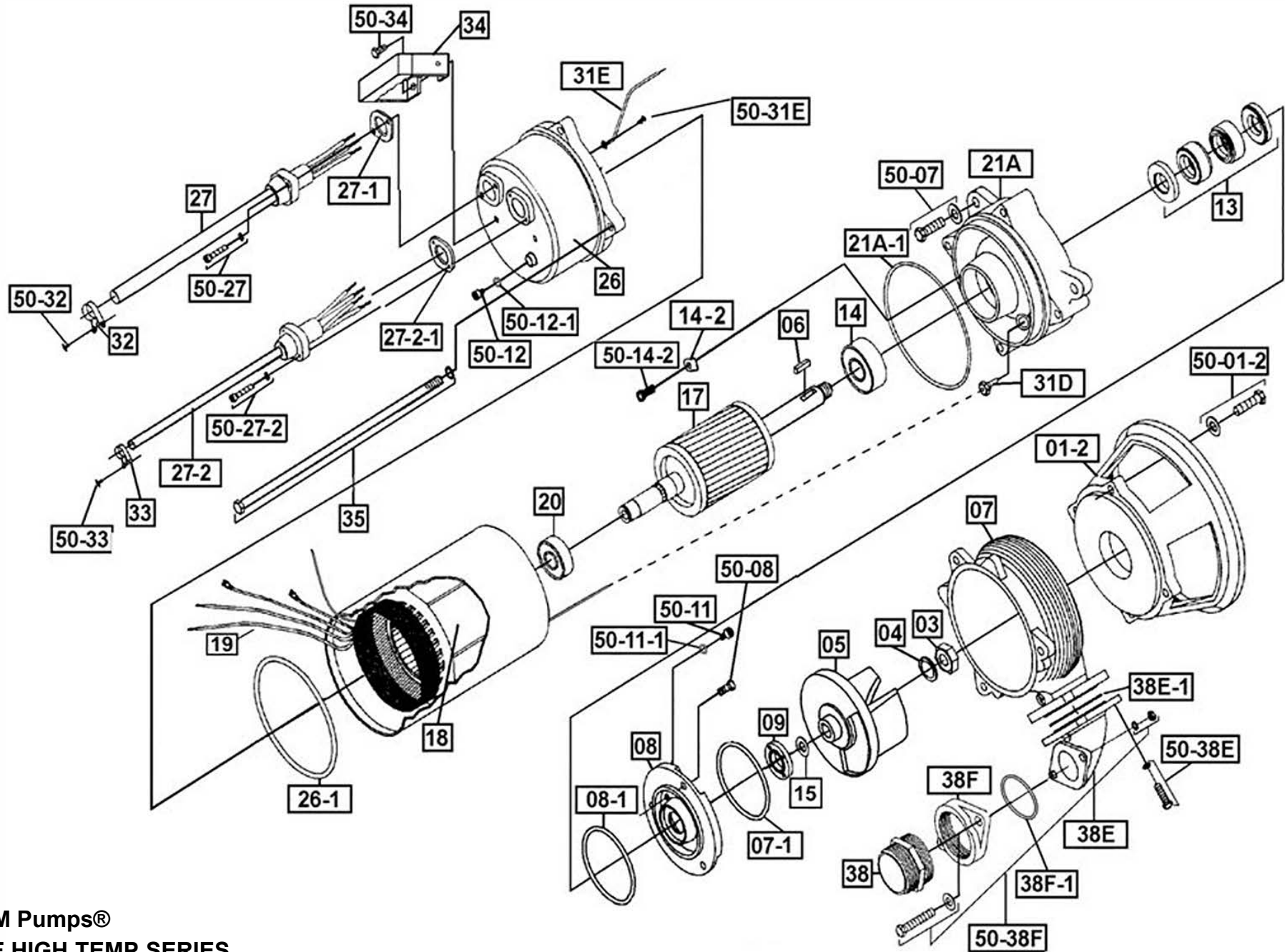
5/12/2020

CAT ID# XVIEW SX750CSSF-SX1500CSS-F



SX08CSSF, SX15CSSF

HIGH TEMPERATURE

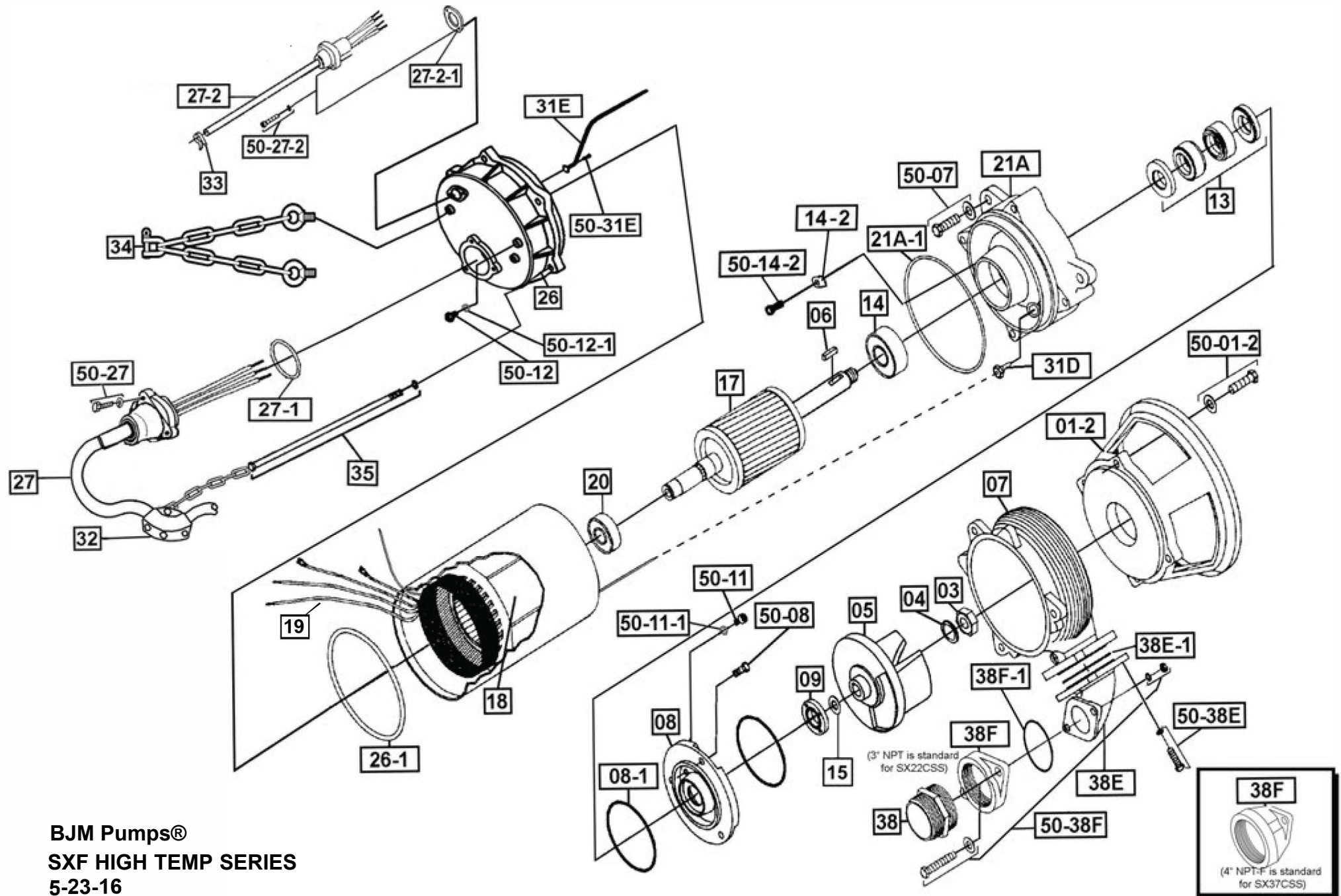




INDUSTRIAL
FLOW
SOLUTIONS™

SX22CSSF, SX37CSSF

HIGH TEMPERATURE



BJM Pumps®
SXF HIGH TEMP SERIES
5-23-16

CAT ID# XVIEW SX22CSSF- SX37CSSF



SX55CSSF, SX75CSSF

HIGH TEMPERATURE

