

## SX-SERIES

	Pump Model	SX750CSS	SX1500CSS	SX08CSS	SX15CSS	SX22CSS	SX37CSS	SX55CSS	SX75CSS
Pos. No.	Part Description	Item #	Item #	Item #	Item #	Item #	Item #	Item #	Item #
01-2	Stand	201985	201987	201985	201987	201991	201993	201997	201997
02	Bottom Plate	-	-	-	-	-	-	202022	202022
03	Impeller Nut	-	202894	202894	202894	202894	202894	202897	202897
04	Impeller Washer	-	202907	202907	202907	202907	202907	202917	202917
05	Impeller *	202095	204631	202101	204631	204632	204633	202111	202113
06	Impeller Key	-	202140	202140	202140	202140	202140	202142	202142
07	Pump Housing	202176	202172	202176	202172	202177	202181	202189	202189
07-1	O-Ring (Kit Only)	Kit	Kit	Kit	Kit	Kit	Kit	-	-
08	Oil Chamber Cover	202214	202214	202214	202214	202219	202219	202217	202217
08-1	O-Ring (Kit Only)	Kit	Kit	Kit	Kit	Kit	Kit	Kit	Kit
09	Lip Seal FKM	202232	202232	202232	202232	202235	202235	202241	202241
09	Lip Seal Buna-N (Optional)	203051	203051	203051	203051	202234	202234	202238	202238
09	Lip Seal EPDM (Optional)	203052	203052	203052	203052	203054	203054	203061	203061
09A	Lower Lip Seal FKM	-	-	-	-	-	-	202241	202241
09A	Lower Lip Seal Buna-N (Optional)	-	-	-	-	-	-	202238	202238
09A	Lower Lip Seal EPDM (Optional)	-	-	-	-	-	-	203061	203061
12	Lip Seal for Lower Bearing	-	-	-	-	-	-	202236	202236
13	Mechanical Seal FKM**	204240	204240	204240	204240	204243	204243	200304	200304
13	Mechanical Seal Buna-N (Optional)	200501	200501	200501	200501	200302	200302	200305	200305
14	Lower Ball Bearing	200958	200958	200958	200958	200959	200959	200960	200961
14-1	Lower Ball Bearing	-	-	-	-	-	-	200960	200961
14-2	Lower Bearing Retainer	202279	202279	202279	202279	202279	202279	202279	202279
15	Impeller Shim Kit (Required)	200481	200481	200480	200480	200480	200480	200479	200479
17	Rotor w/ Shaft 115/230V, 1PH	203089	203093	-	-	-	-	-	-
17	Rotor w/ Shaft, 2PH	-	204716	-	-	-	-	-	-
17	Rotor w/ Shaft, 3PH	-	-	202308	202312	202316	202320	202325	202327
18	Stator w/ Casing 115V, 1PH	200513	-	-	-	-	-	-	-
18	Stator w/ Casing 230V, 1PH	200571	200516	-	-	-	-	-	-
18	Stator w/ Casing 208V, 3PH	-	-	200526	200530	200534	200538	200667	-
18	Stator w/ Casing 230/460V, 3PH	-	-	200548	200552	200556	200560	200564	200568
18	Stator w/ Casing 575V, 3PH	-	-	200590	200594	200598	200600	200607	200611
19	Governor Switch w/Switch Plate	202360	202360	-	-	-	-	-	-
20	Upper Ball Bearing	200967	200967	200967	200967	200958	200958	200959	200959
20-1	O-Ring (Kit Only)	-	-	-	-	-	-	Kit	Kit
21A	Oil Chamber/Motor Housing	202197	202197	202197	202197	202198	202198	203013	203005
21A-1	O-Ring (Kit Only)	Kit	Kit	Kit	Kit	Kit	Kit	Kit	Kit
21B	Motor Cover Upper	202368	202368	-	-	-	-	-	-
23	Overload Protector 115V, 1PH	202383	-	-	-	-	-	-	-
23	Overload Protector 230V, 1PH	202395	202383	-	-	-	-	-	-
23	Overload Protector 208V, 3PH	-	-	202385	202388	202390	202392	202394	-
23	Overload Protector 230V, 3PH	-	-	202385	202388	202390	202392	202394	202396
23	Overload Protector 460V, 3PH	-	-	202387	202386	202389	202391	202393	202394
23	Overload Protector 575V, 3PH	-	-	202399	202387	202386	202389	202391	202393
24	Capacitor 115V	202417	-	-	-	-	-	-	-
24	Capacitor 230V	202418	202420	-	-	-	-	-	-
26	Pump Top Cover (W/ Sensor opening)	202434	202434	202436	202436	202438	202438	202440	202440
26-1	O-Ring (Kit Only)	Kit	Kit	Kit	Kit	Kit	Kit	Kit	Kit
27	Power Cable w/ Gland- 115V,1PH	204262	-	-	-	-	-	-	-
27	Power Cable w/ Gland-230V, 1PH, No Plug	201695	201695	-	-	-	-	-	-
27	Power Cable w/ Gland- 3PH	-	-	201702	201702	203443	203445	203447	203447

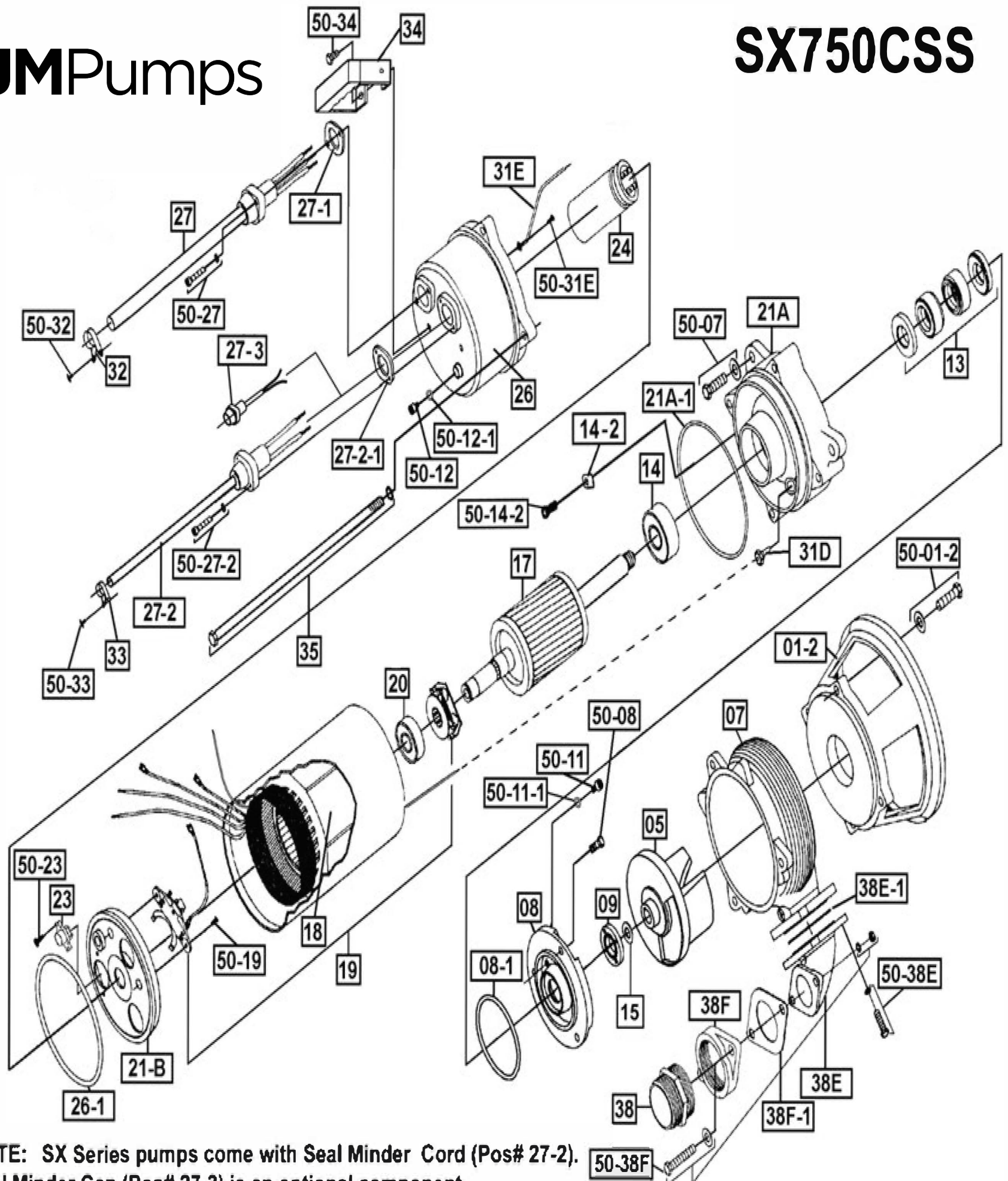
\*\*All 1 HP and up BJM Pumps® mechanical seal elastomer material is FKM

## SX-SERIES

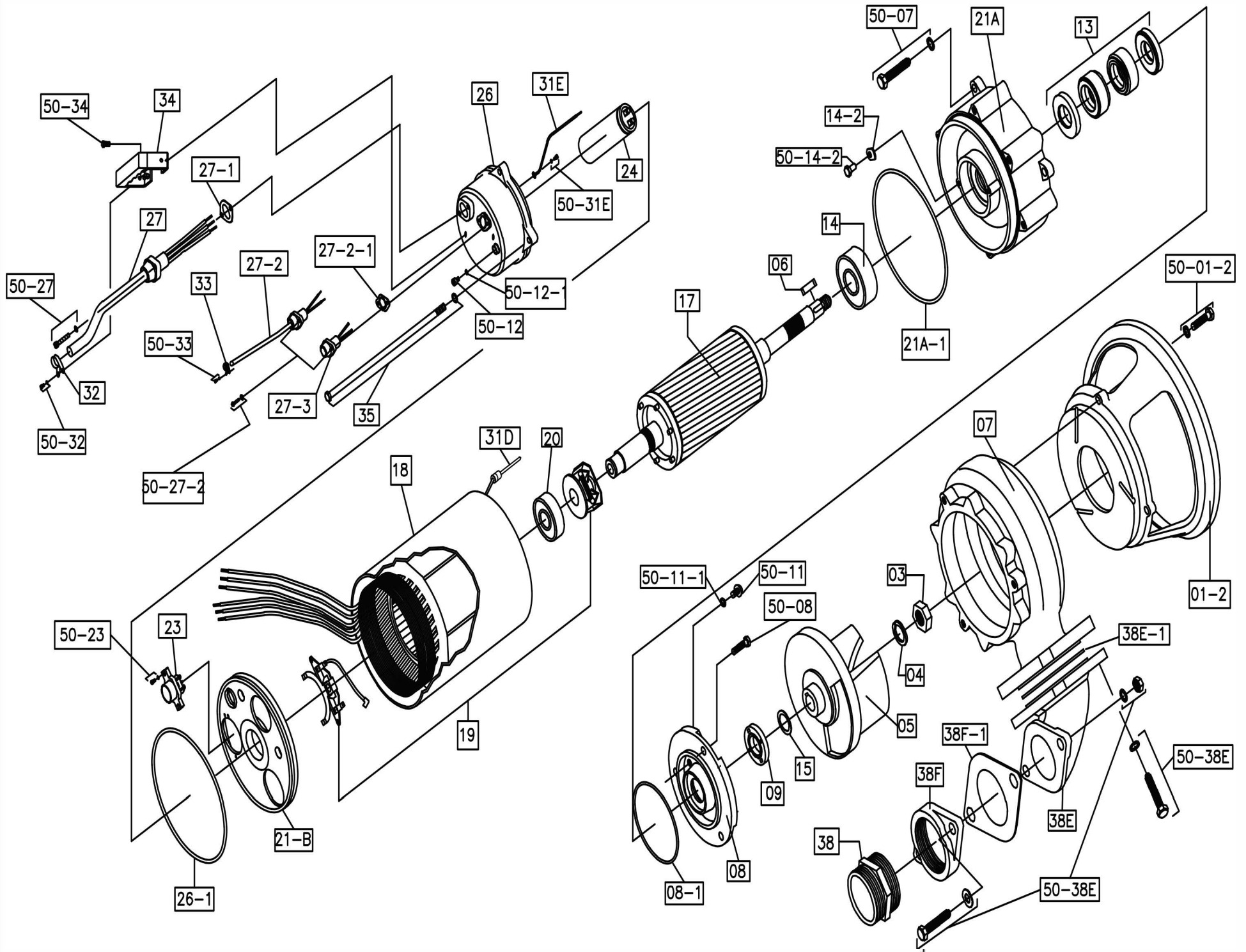
	Pump Model	SX750CSS	SX1500CSS	SX08CSS	SX15CSS	SX22CSS	SX37CSS	SX55CSS	SX75CSS
Pos. No.	Part Description	Item #	Item #	Item #	Item #	Item #	Item #	Item #	Item #
27-1	O-Ring (Kit Only)	Kit	Kit	Kit	Kit	Kit	Kit	Kit	Kit
27-2	Seal Minder® Cable	201713	201713	201713	201713	201713	201713	201713	201713
27-2-1		Kit	Kit	Kit	Kit	Kit	Kit	Kit	Kit
27-3	Seal Minder® Cap	201718	201718	201718	201718	201718	201718	201718	201718
31D	Seal Minder® Probe	202408	202408	202408	202408	202410	202410	204000	204000
31E	Ground Wire w/Ring Term.	203145	203145	203145	203145	203145	203145	203145	203145
32	Power Cord Line Clip / Strain Relief	203166	203166	203161	203161	202504	202505	202497	202497
33	Seal Minder® Cable Line Clip	203163	203163	203163	203163	203163	203163	203163	203163
34	Handle / Chain Handle	202517	202517	202517	202517	202510	202510	202516	202516
35	Rod Bolts	202682	202683	202684	202685	202686	202687	202673	202674
38	Discharge Nipple 2"	202532	-	202532	-	-	-	-	-
38	Discharge Nipple 3"	-	202535	-	202535	202535	202535	-	-
38E	Discharge Elbow	202571	202559	202571	202559	202559	202559	202561	202561
38E-1	O-Ring, Discharge Elbow FKM	203326	203327	203326	203327	203327	203327	-	-
38E-1	Gasket, Discharge Elbow FKM	-	-	-	-	-	-	203211	203211
38E-1	Gasket, Discharge Elbow Buna-N (Optional)	-	-	-	-	-	-	203210	203210
38F	Discharge Flange 2"	202563	-	202563	-	-	-	-	-
38F	Discharge Flange 3"	-	202546	-	202546	202546	202546	-	-
38F	Discharge Flange 4"	-	-	-	-	202553	202553	202540	202540
38F-1	O-Ring, 2" Discharge Flange FKM	202723	-	202723	-	-	-	-	-
38F-1	O-Ring, 3" Discharge Flange FKM	-	202724	-	202724	202724	202724	-	-
38F-1	O-Ring, 4" Discharge Flange FKM	-	-	-	-	203328	203328	-	-
38F-1	Gasket, 4" Discharge Flange FKM	-	-	-	-	-	-	203211	203211
38F-1	Gasket, Discharge Flange Buna-N (Optional)	-	-	-	-	-	-	203210	203210
50-01-2	Bolt for Strainer/Stand	203228	203228	203228	203228	203228	203228	203229	203229
50-02	Bolt for Suction Cover	-	-	-	-	-	-	203229	203229
50-07	Screw for Oil Chamber/Motor Housing	203296	203296	203296	203296	203296	203296	203229	203229
50-08	Screw for Oil Chamber Cover	203219	203219	203219	203219	203219	203219	203246	203246
50-11	Screw for Oil Fill	203218	203218	203218	203218	203218	203218	203218	203218
50-11-1	O-Ring (Kit Only)	Kit	Kit	Kit	Kit	Kit	Kit	Kit	Kit
50-12	Screw for Pressure Check	203218	203218	203218	203218	203218	203218	203218	203218
50-12-1	O-Ring (Kit Only)	Kit	Kit	Kit	Kit	Kit	Kit	Kit	Kit
50-14-2	Screw for Bearing Retainer	203219	203219	203219	203219	203219	203219	203219	203219
50-19	Screw for Gov. Switch Plate	202693	202693	-	-	-	-	-	-
50-23	Screw for Overload	202700	202700	202700	202700	202700	202700	202700	202700
50-27	Screw for Power Cord	203295	203295	203295	203295	203246	203246	203246	203246
50-27-2	Screw for Seal Minder® Cable	203295	203295	203295	203295	203295	203295	203295	203295
50-31E	Screw for Ground Wire	202692	202692	202692	202692	202692	202692	202692	202692
50-32/50-33	Screw for Line Clip	203214	203214	203214	203214	-	-	-	-
50-34	Screw for Handle	203219	203219	203219	203219	-	-	-	-
50-34-3	Lock Washer	-	-	-	-	-	-	202902	202902
50-38E	Bolt for Discharge Elbow	203294	203271	203294	203271	203271	203271	203286	203286
50-38F	Bolt for Discharge Flange	203229	203294	203229	203294	203294	203294	203287	203287
	<b>O-Ring Kit - FKM</b>	202630	202630	202647	202647	202642	202642	202644	202644
	<b>O-Ring Kit - Buna-N (Optional)</b>	-	-	-	-	-	-	-	-

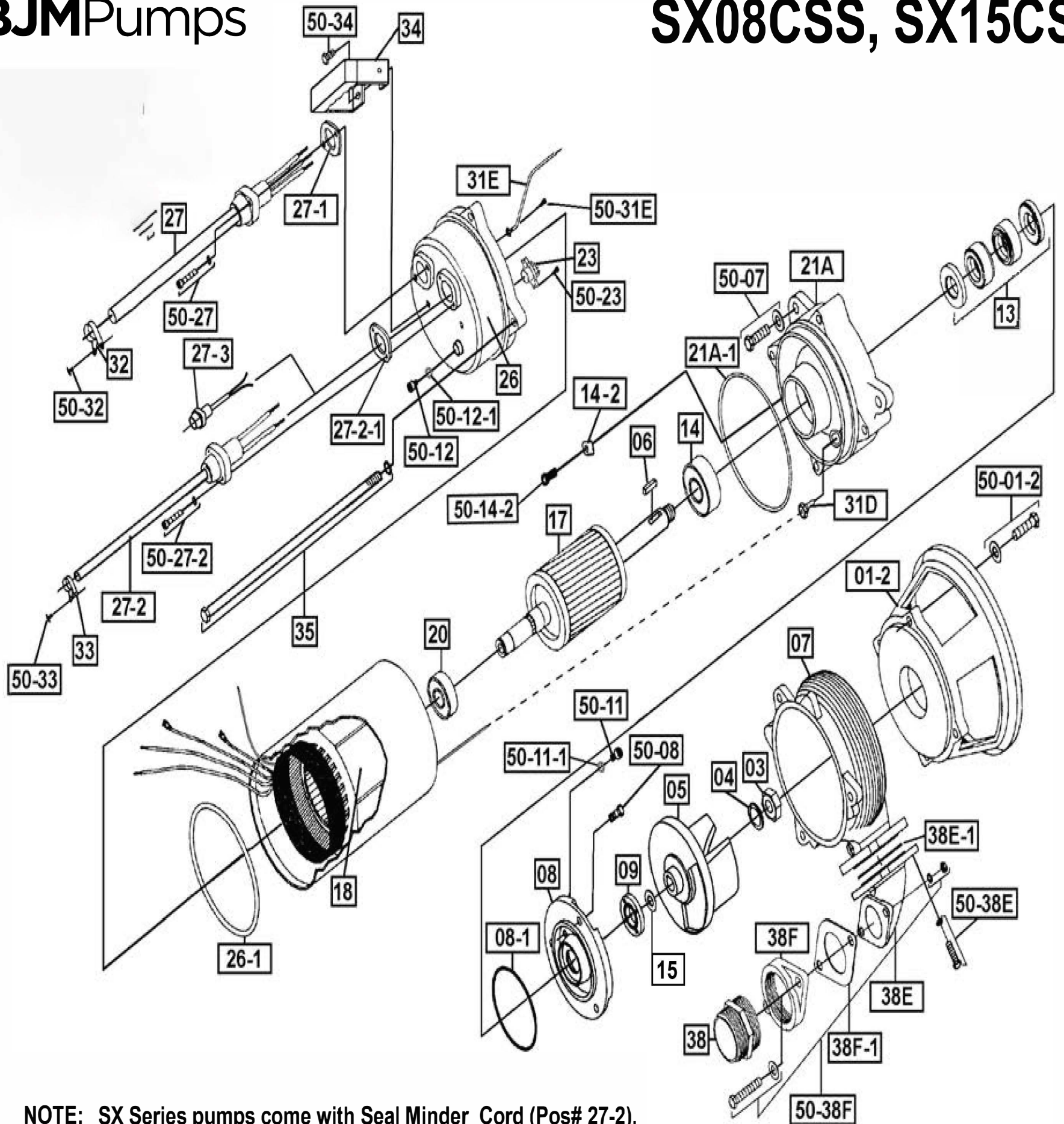
\* New Rotor With Shaft Required When Upgrading From 202097 Impeller To 204631 Impeller.

\*\*All 1 HP and up BJM Pumps® mechanical seal elastomer material is FKM

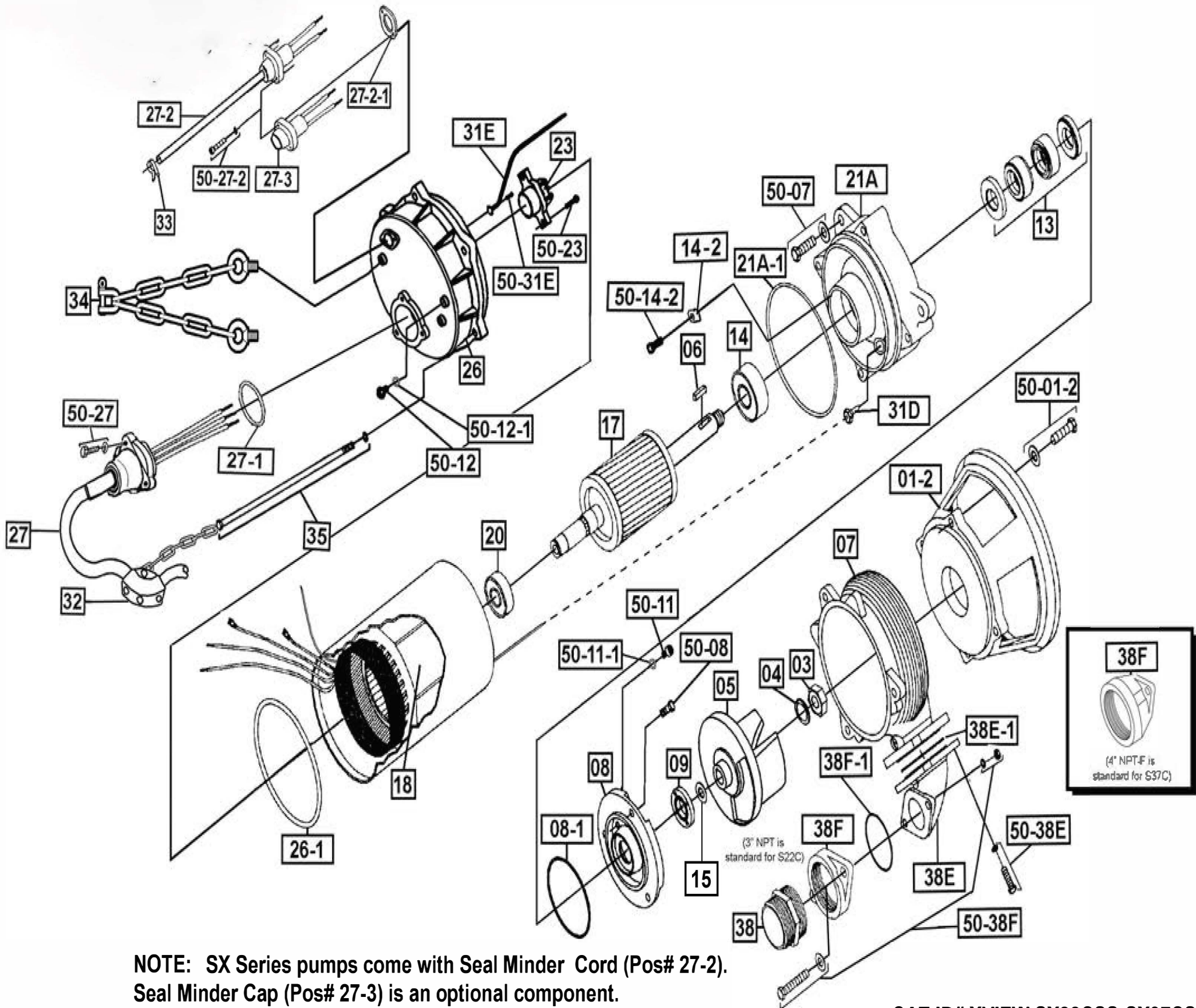


**NOTE: SX Series pumps come with Seal Minder Cord (Pos# 27-2). Seal Minder Cap (Pos# 27-3) is an optional component.**

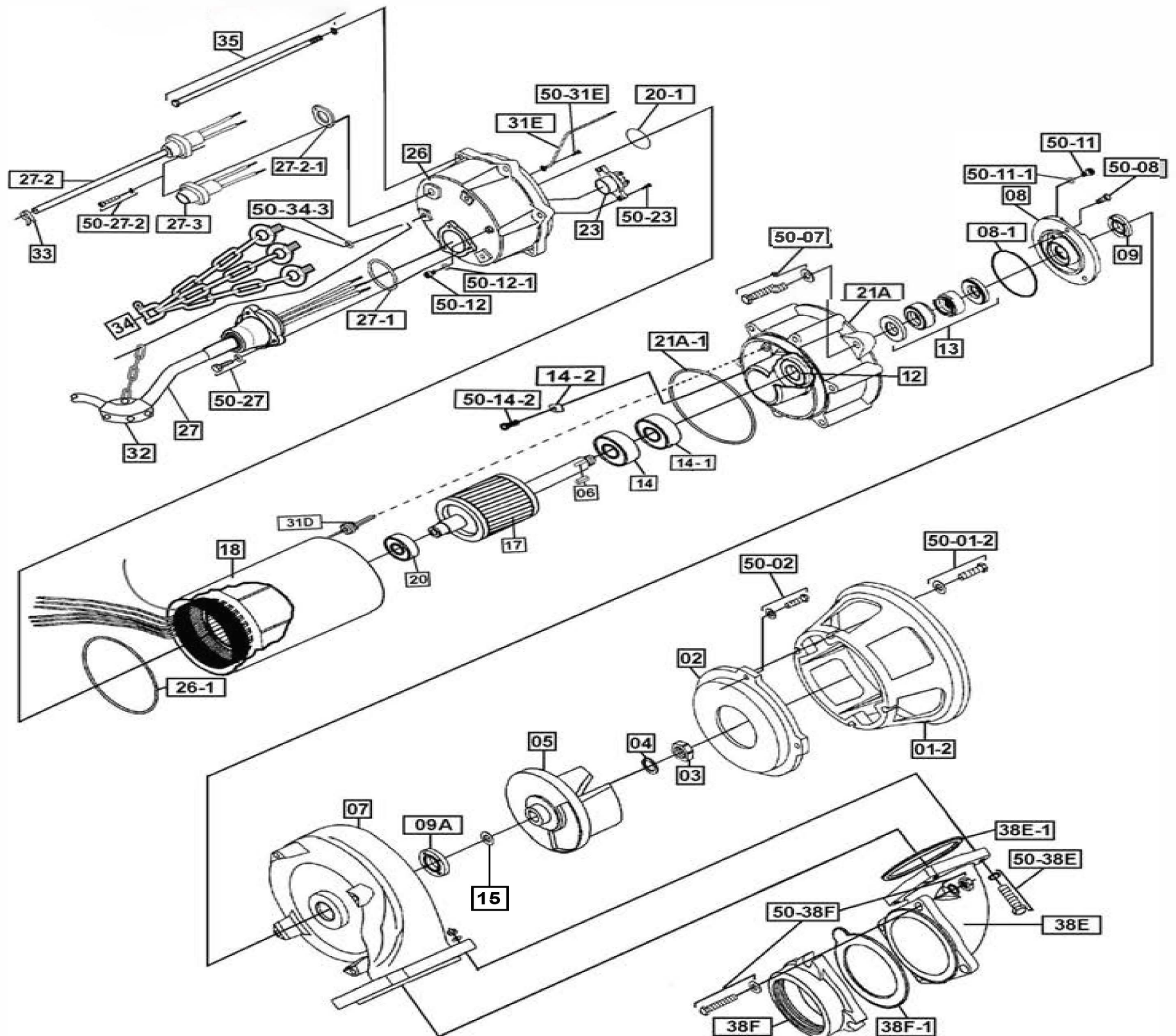




**NOTE:** SX Series pumps come with Seal Minder Cord (Pos# 27-2).  
Seal Minder Cap (Pos# 27-3) is an optional component.



**NOTE:** SX Series pumps come with Seal Minder Cord (Pos# 27-2). Seal Minder Cap (Pos# 27-3) is an optional component.



Note: SX Series pumps come with Seal Minder Cord (Pos# 27-2). Seal Minder Cap (Pos# 27-3) is an optional component. CAT ID# XVIEW SX55CSSF SX75CSSF