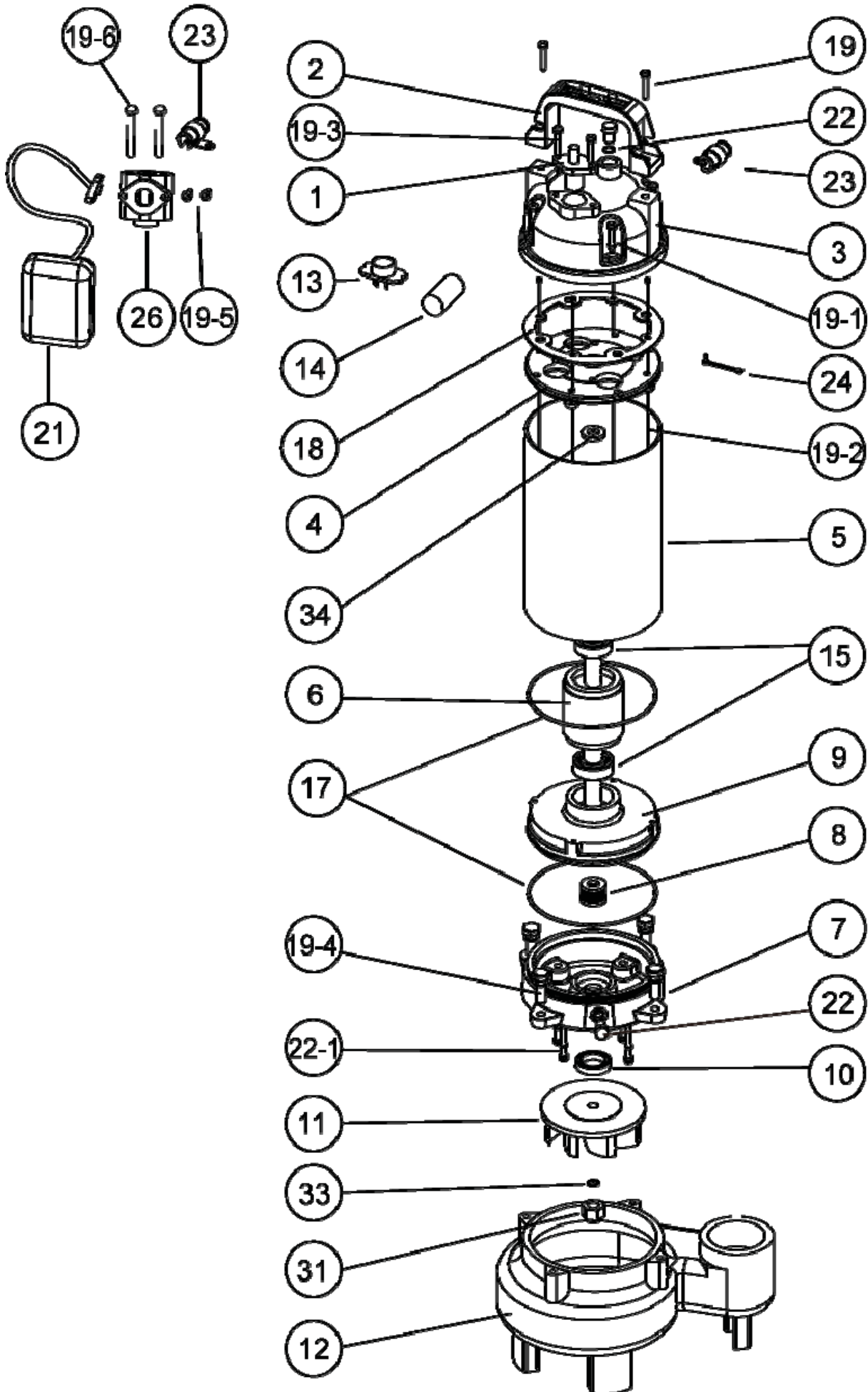


List of Parts (SEW-50&100)

NO	Name	Mtrl	Photo	NO	Name	Mtrl	Photo
1	Cable	UL		11	Impeller	Cast Iron	
2	Handle	Nylon 6		12	Pump Casing	Cast Iron	
3	Motor Cover	PA66+30 GF		13	Protector (1 Phase)		
4	Bracket	Cast Iron		13	Protector (3 Phase)		
5	Motor Housing + Stator	SUS 304		14	Capacitor (1 Phase only)		
6	Shaft with Rotor	SUS 410		15	Bearing		
7	Oil Chamber	Cast Iron		17	O-ring	NBR	
8	Double Mech. Seal	CA/CE + SIC/SIC		18	Gasket	NBR	
9	Seal Housing	Cast Iron		21	Float Switch (Option)		
10	Oil Seal	NBR					

NO	Name	Mtrl	NO	Name	Mtrl
19	Screw	SUS 304	22-1	Screw with O-ring	
19-1	Screw	SUS 304	23	Cable Seat	
19-2	Screw	Steel	24	Wire and Screw	
19-3	Screw	SUS 304	26	T adapter (Optional)	
19-4	Screw	SUS 304	31	Nut	SUS 304
19-5	Screw	SUS 304	33	Spring Washer	SUS 304
19-6	Screw	SUS 304	34	Corrugated Spring	Steel
22	Screw with O-ring				

Exploded View (SEW-50&100)



List of Parts (SEW-150&200)

NO	Name	Mtrl	Photo	NO	Name	Mtrl	Photo
1	Cable	UL		11	Impeller	Cast Iron	
2	Handle	Nylon 6		12	Pump Casing	Cast Iron	
3	Motor Cover	Cast Iron		13	Protector (1 Phase)		
4	Bracket	Cast Iron		13	Protector (3 Phase)		
5	Motor Housing +Stator	SUS 304		14	Capacitor (1 Phase only)		
6	Shaft with Rotor	SUS 410		15	Bearing		
7	Oil Chamber	Cast Iron		17	O-ring	NBR	
8	Double Mech. Seal	CA/CE + SIC/SIC		18	Gasket	NBR	
9	Seal Housing	Cast Iron		21	Float Switch (Option)		
10	Oil Seal	NBR					

NO	Name	Mtrl	NO	Name	Mtrl
19	Screw	SUS 304	19-7	Screw	SUS 304
19-1	Screw	SUS 304	20-1	Washer	SUS 304
19-2	Screw	Steel	22	Screw with O-ring	
19-3	Screw	SUS 304	22-1	Screw with O-ring	
19-4	Screw	SUS 304	23	Cable seat	
19-5	Screw	SUS 304	24	Wire and Screw	
19-6	Screw	SUS 304	26	T adapter (Optional)	

Exploded View (SEW-150&200)

