



# LIST OF PARTS

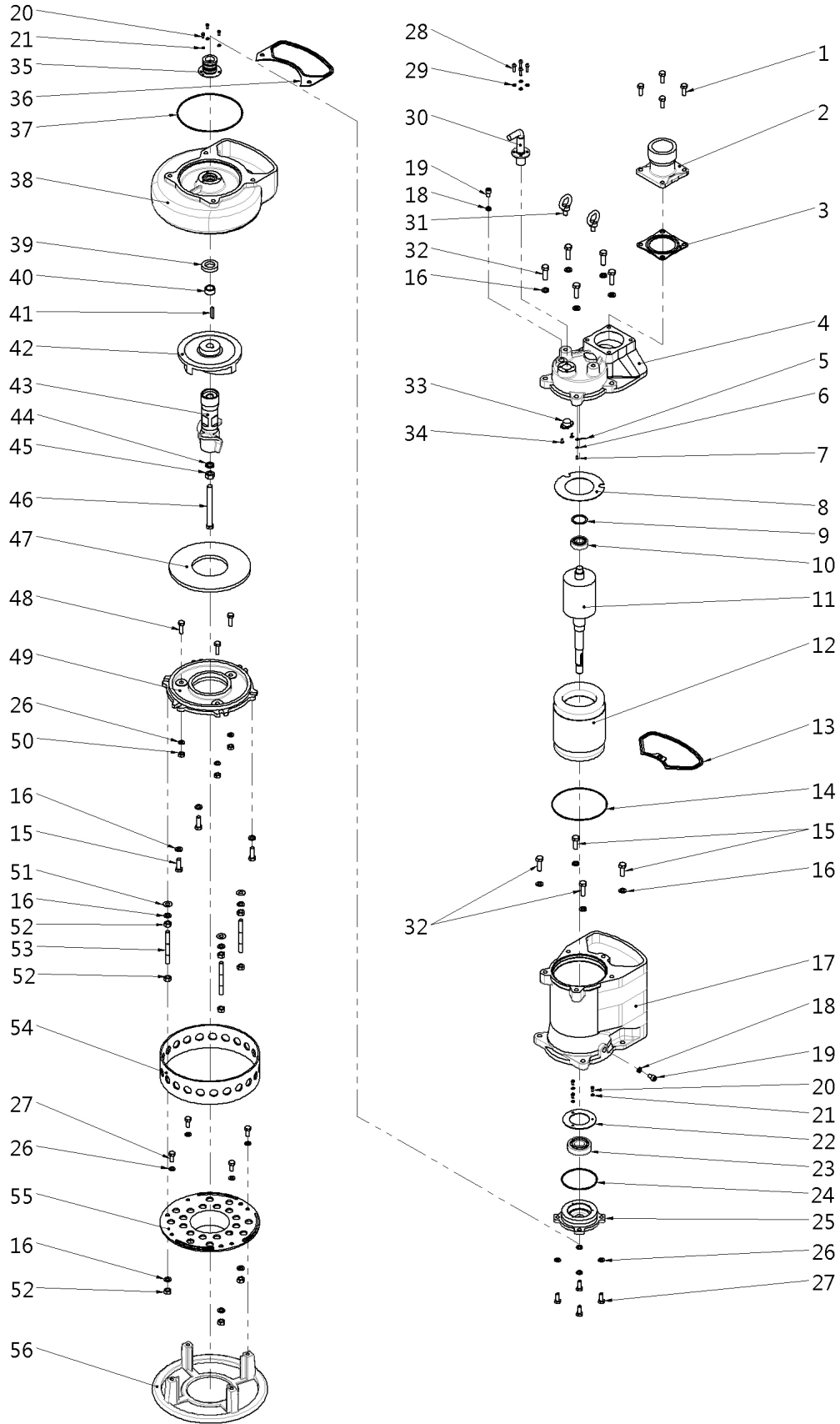
## Slurry Pumps SKR-337

**Drawing Number:** DS-A06-085    **Rev:** 1    **Date:** 2/3/2021

Position	Stancor Part #	Description	Qty.
0	4730100055	Screw Kit,SKR-337,437	1
0	4410100055	O-Ring Kit,SKR-337,SKR-437,NBR	1
0	3066104008	Cable gland,SKR-337	1
1	2730143403	Screw,M10,SS	4
2	3001360411	Discharge,3" NPT,SKR-337,CI	1
3	3045071009	Discharge Gasket,NBR	1
4	3004360032	Upper Cover,SKR-337	1
5	3080030001	Earth lead,Yellow	1
5	3080010005	Earth lead,Green	2
6	2750730002	Washer,SKR-337,355,455,475,4110,6110,6150	1
7	2730230103	Screw,M4,CS	1
8	3064020001	Insulating sheet,SKR-337	1
9	2750130006	Wave Washer,Bearing,SKR-337	1
10	1790100014	Upper Bearing,SKR-337	1
11	3032482050	Rotor Shaft Assembly,SKR-337	1
12	3031407202A	Stator,4P,460/3/60,SKR-337	1
13	3045031010	Gasket,NBR	1
14	1411002004	O-Ring,NBR	1
15	2730143504	Screw,M12,SS	5
16	2750343008	Lock Washer,Split,M12,SS	18
17	3017360029	Motor frame,SKR-337	1
18	3045091001	Air/Oil Holes Gasket,NBR	2
19	2730343401	Screw,M10,SS	2
20	2730143102	Screw,M5,SS	6
21	2750343004	Lock Washer,Split,M5,SS	6
22	3065013105	Bearing Shim,SKR-337	1
23	1790100016	Lower Bearing,SKR-337	1
24	1411004002	O-Ring,NBR	1
25	3019360038	Bearing bracket,SKR-337	1
26	2750343007	Lock Washer,Split,M10,SS	11
27	2730143402	Screw,M10,SS	8
28	2730343203	Screw,M6,SS	4
29	2750343005	Lock Washer,Split,M6,SS	4
30	4811301101	Cable Assembly,8/3G-GC,50FT,Black	1
31	2760330002	Eye Bolt,M12,SKR-337,355,475	2
32	2730143505	Screw,M12,SS	7
33	1710200004	Thermal Protector,SKR-337,SKR-437,400V	1
34	2730443102	Screw,M4,SS	2
35	1430203006	Mechanical Seal,Double,SKR-337	1
36	3045041008	Pump Casing Gasket,NBR	1
37	1411004003	O-Ring,NBR	1

Specifications subject to change without notice







# LIST OF PARTS

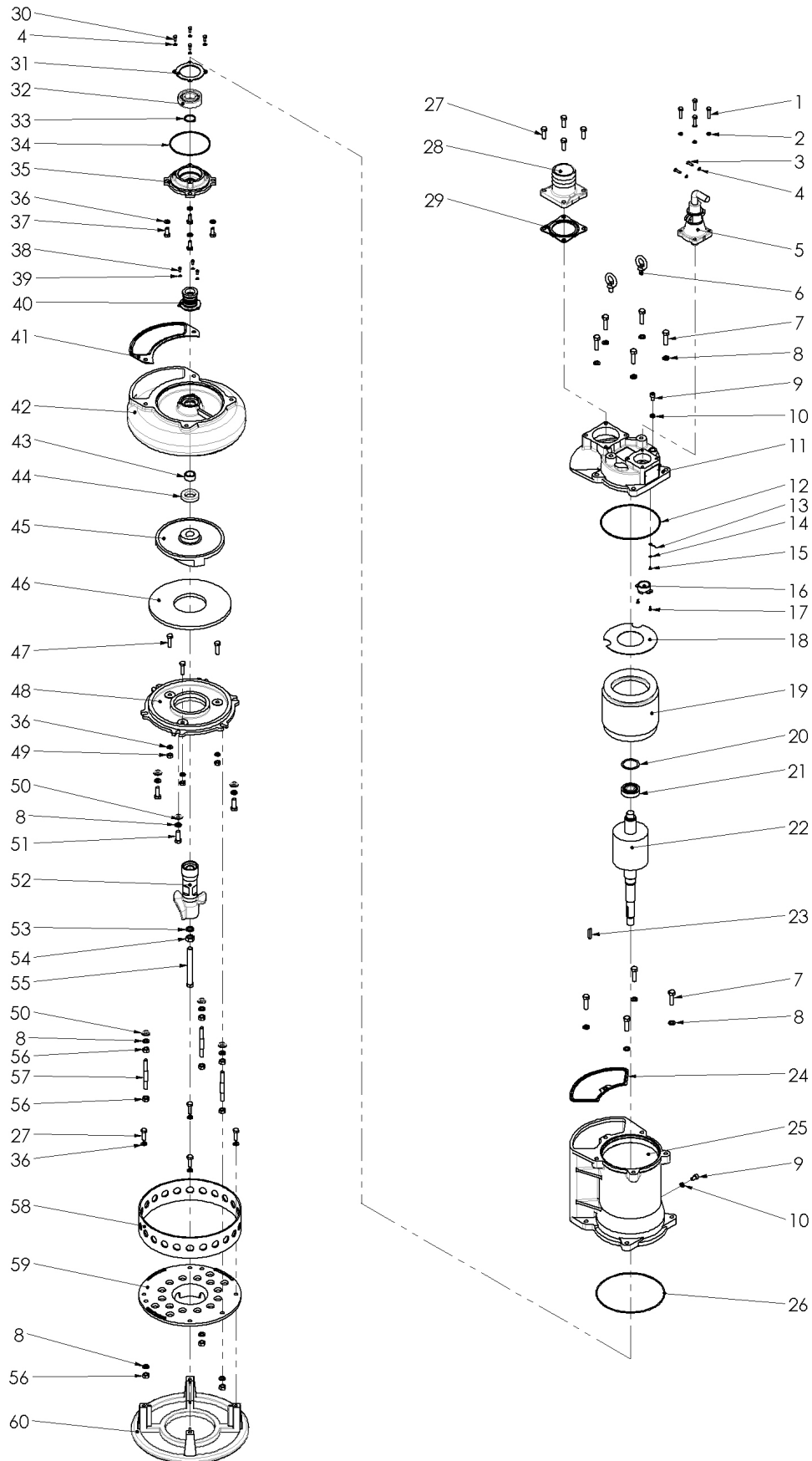
## Slurry Pumps SKR-355

**Drawing Number:** DS-A06-087    **Rev:** 1    **Date:** 2/3/2021

Position	Stancor Part #	Description	Qty.
0	4730100058	Screw Kit,SKR-355,455,475	1
0	4410100058	O-Ring Kit,SKR-355,SKR-455,SKR-475,NBR	1
0	3066105009	Cable gland,SKR-355,455,475,4110,6110,6150	1
1	2730143305	Screw,M8,SS	4
2	2750343006	Lock Washer,Split,M8,SS	4
3	2730143204	Screw,M6,SS	2
4	2750343005	Lock Washer,Split,M6,SS	6
5	4811301201	Cable Assembly,8/3G-GC,50FT,Black	1
6	2760330002	Eye Bolt,M12,SKR-337,355,475	2
7	2730143506	Screw,M12,SS	9
8	2750343008	Lock Washer,Split,M12,SS	18
9	2730343401	Screw,M10,SS	2
10	3045091001	Air/Oil Holes Gasket,NBR	2
11	3004360009A	Upper cover,SKR-355,455,475	1
12	1411005003	O-Ring,NBR	1
13	3080030001	Earth lead,Yellow	1
13	3080010005	Earth lead,Green	2
14	2750730002	Washer,SKR-337,355,455,475,4110,6110,6150	1
15	2730230103	Screw,M4,CS	1
16	1710200005	Thermal Protector,460v,SKR-355,455	1
17	2730443102	Screw,M4,SS	2
18	3064020002	Insulating sheet,SKR-355,455,475,6220,8220	1
19	3031403102A	Stator,4P,460/3/60,SKR-355,455,475	1
20	2750130007	Wave Washer,Bearing,SKR-355,455,475	1
21	1790100015	Upper Bearing,SKR-355,455,475	1
22	3032482051	Rotor Shaft Assembly,SKR-355,455,475,475	1
23	2770343002	Key,SKR-355,475,4110,6110,6150,6220,8220	1
24	3045031005	Gasket,NBR	1
25	3017360025	Motor frame,SKR-355,455,475	1
26	1411005008	O-Ring,NBR	1
27	2730143404	Screw,M10,SS	8
28	3001360411	Discharge,3" NPT,SKR-337,CI	1
29	3045071009	Discharge Gasket,NBR	1
30	2730143203	Screw,M6,SS	4
31	3065013101	Bearing Shim,SKR-355,455,475	1
32	1790100017	Lower Bearing,SKR-355,455,475	1
33	2760530005	Snap Ring,SKR-355,455,475	1
34	1411004012	O-Ring,NBR	1
35	3019360015	Bearing bracket,SKR-355,475	1
36	2750343007	Lock Washer,Split,M10,SS	11
37	2730143402	Screw,M10,SS	4

Specifications subject to change without notice







# LIST OF PARTS

## Slurry Pumps SKR-437

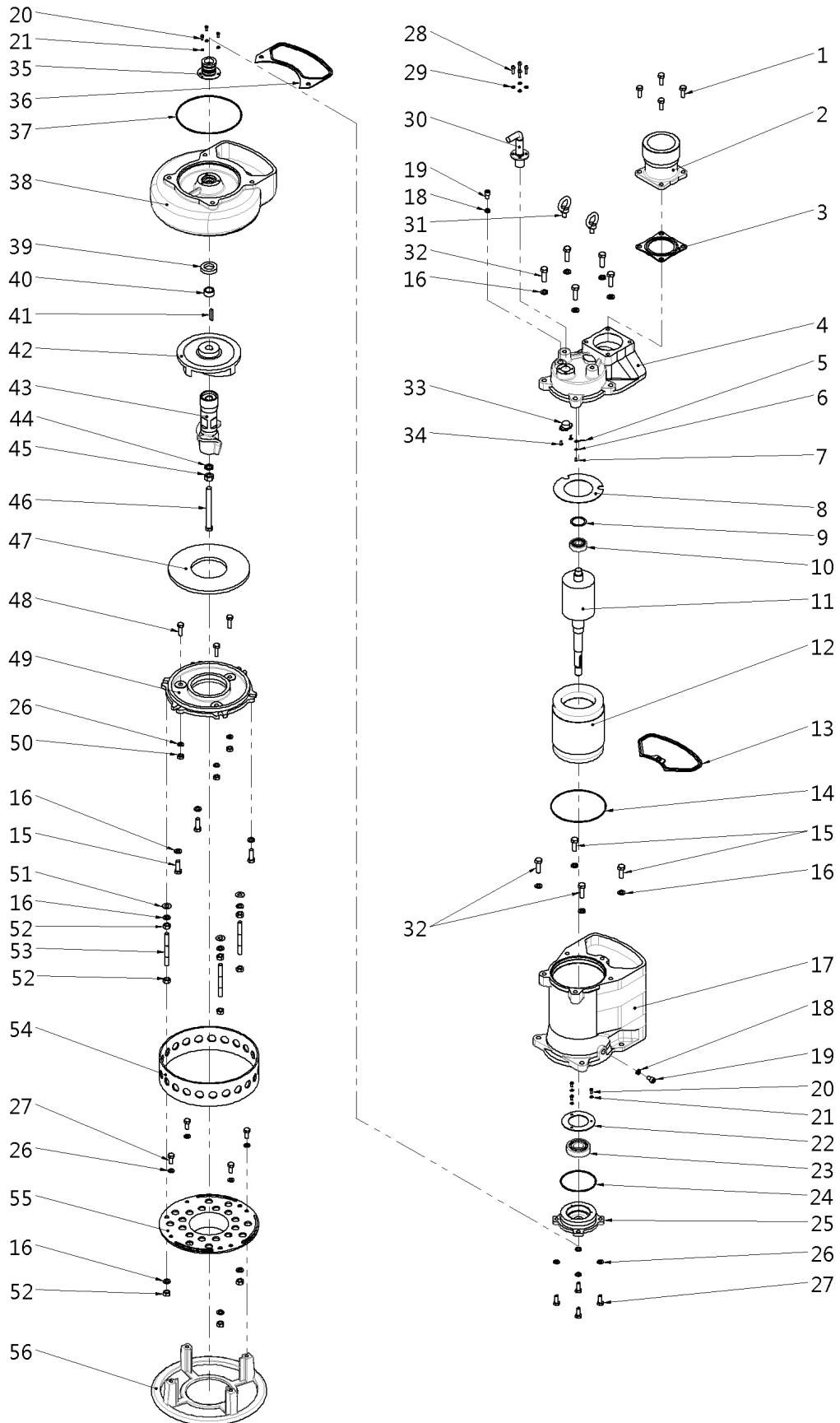
**Drawing Number:** DS-A06-086    **Rev:** 1    **Date:** 2/3/2021

Position	Stancor Part #	Description	Qty.
0	4730100055	Screw Kit,SKR-337,437	1
0	4410100055	O-Ring Kit,SKR-337,SKR-437,NBR	1
0	3066104008	Cable gland,SKR-337	1
1	2730143403	Screw,M10,SS	4
2	3001360505	Discharge,4" NPT,SKR-455,475,CI	1
3	3045071009	Discharge Gasket, NBR, 4-holes-94	1
4	3004360032	Upper Cover,SKR-337	1
5	3080030001	Earth lead,Yellow	1
5	3080010005	Earth lead,Green	2
6	2750730002	Washer,SKR-337,355,455,475,4110,6110,6150	1
7	2730230103	Screw,M4,CS	1
8	3064020001	Insulating sheet,SKR-337	1
9	2750130006	Wave Washer,Bearing,SKR-337	1
10	1790100014	Upper Bearing,SKR-337	1
11	3032482050	Rotor Shaft Assembly,SKR-337	1
12	3031407202A	Stator,4P,460/3/60,SKR-337	1
13	3045031010	Gasket,NBR	1
14	1411002004	O-Ring,NBR	1
15	2730143504	Screw,M12,SS	5
16	2750343008	Lock Washer,Split,M12,SS	18
17	3017360029	Motor frame,SKR-337	1
18	3045091001	Air/Oil Holes Gasket,NBR	2
19	2730343401	Screw,M10,SS	2
20	2730143102	Screw,M5,SS	6
21	2750343004	Lock Washer,Split,M5,SS	6
22	3065013105	Bearing Shim,SKR-337	1
23	1790100016	Lower Bearing,SKR-337	1
24	1411004002	O-Ring,NBR	1
25	3019360038	Bearing bracket,SKR-337	1
26	2750343007	Lock Washer,Split,M10,SS	11
27	2730143402	Screw,M10,SS	8
28	2730343203	Screw,M6,SS	4
29	2750343005	Lock Washer,Split,M6,SS	4
30	4811301101	Cable Assembly,8/3G-GC,50FT,Black	1
31	2760330002	Eye Bolt,M12,SKR-337,355,475	2
32	2730143505	Screw,M12,SS	7
33	1710200004	Thermal Protector,SKR-337,SKR-437,400V	1
34	2730443102	Screw,M4,SS	2
35	1430203006	Mechanical Seal,Double,SKR-337	1
36	3045041008	Pump Casing Gasket,NBR	1
37	1411004003	O-Ring,NBR	1

Specifications subject to change without notice









# LIST OF PARTS

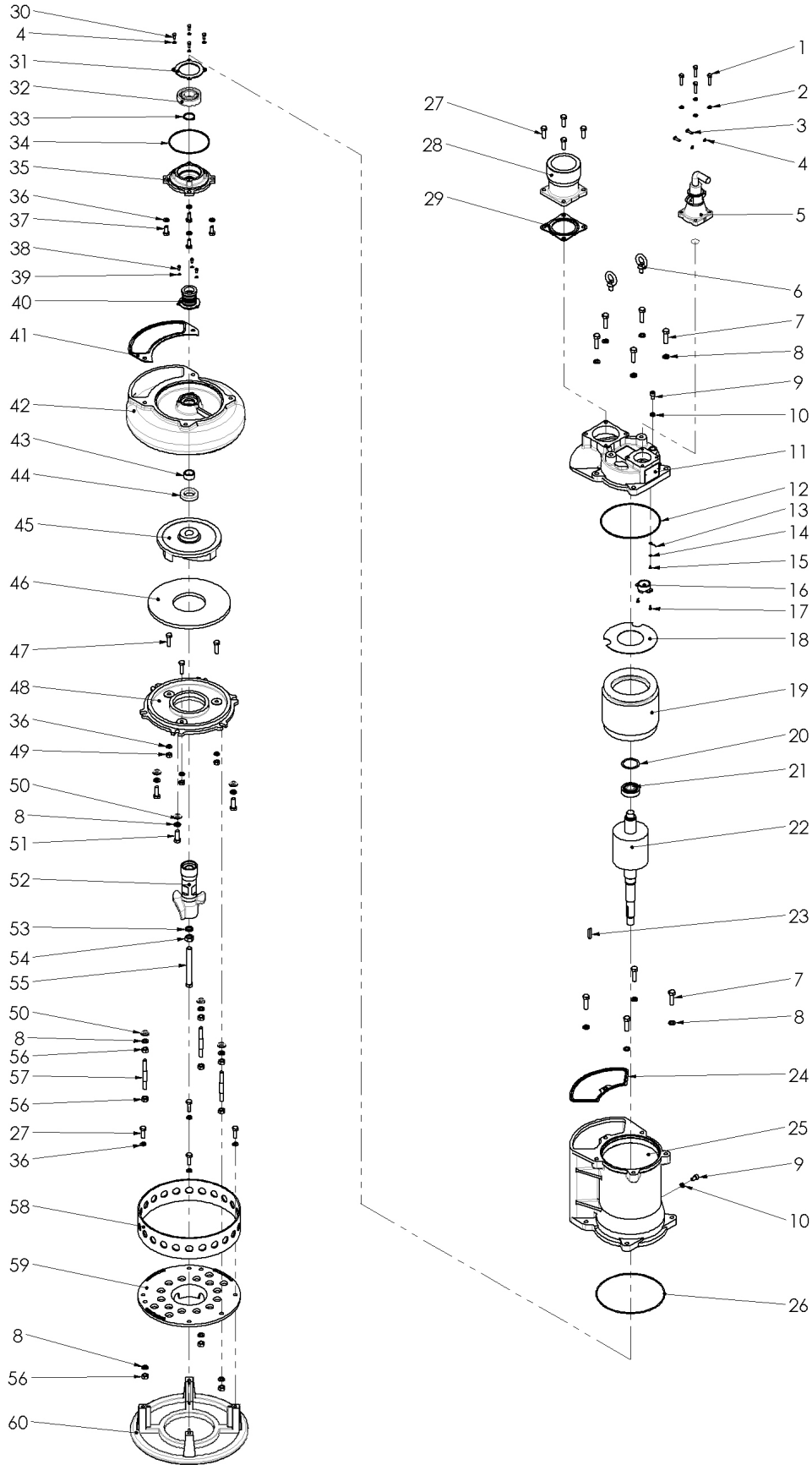
## Slurry Pumps SKR-455

**Drawing Number:** DS-A06-088    **Rev:** 1    **Date:** 2/3/2021

Position	Stancor Part #	Description	Qty.
0	4730100058	Screw Kit,SKR-355,455,475	1
0	4410100058	O-Ring Kit,SKR-355,SKR-455,SKR-475,NBR	1
0	3066105009	Cable gland,SKR-355,455,475,4110,6110,6150	1
1	2730143305	Screw,M8,SS	4
2	2750343006	Lock Washer,Split,M8,SS	4
3	2760330002	Eye Bolt,M12,SKR-337,355,475	2
4	2750343005	Lock Washer,Split,M6,SS	6
5	4811301201	Cable Assembly,8/3G-GC,50FT,Black	1
6	2730143506	Screw,M12,SS	9
7	2730143204	Screw,M6,SS	2
8	2750343008	Lock Washer,Split,M12,SS	18
9	2730343401	Screw,M10,SS	2
10	3045091001	Air/Oil Holes Gasket,NBR	2
11	3004360009A	Upper cover,SKR-355,455,475	1
12	1411005003	O-Ring,NBR	1
13	3080030001	Earth lead,Yellow	1
13	3080010005	Earth lead,Green	2
14	2750730002	Washer,SKR-337,355,455,475,4110,6110,6150	1
15	2730230103	Screw,M4,CS	1
16	1710200005	Thermal Protector,460v,SKR-355,455	1
17	2730443102	Screw,M4,SS	2
18	3064020002	Insulating sheet,SKR-355,455,475,6220,8220	1
19	3031403102A	Stator,4P,460/3/60,SKR-355,455,475	1
20	2750130007	Wave Washer,Bearing,SKR-355,455,475	1
21	1790100015	Upper Bearing,SKR-355,455,475	1
22	3032482051	Rotor Shaft Assembly,SKR-355,455,475,475	1
23	2770343002	Key,SKR-355,475,4110,6110,6150,6220,8220	1
24	3045031005	Gasket,NBR	1
25	3017360025	Motor frame,SKR-355,455,475	1
26	1411005008	O-Ring,NBR	1
27	2730143404	Screw,M10,NBR	8
28	3001360505	Discharge,4" NPT,SKR-455,475,CI	1
29	3045071009	Discharge Gasket,NBR	1
30	2730143203	Screw,M6,SS	4
31	3065013101	Bearing Shim,SKR-355,455,475	1
32	1790100017	Lower Bearing,SKR-355,455,475	1
33	2760530005	Snap Ring,SKR-355,455,475	1
34	1411004012	O-Ring,NBR	1
35	3019360015	Bearing bracket,SKR-355,475	1
36	2750343007	Lock Washer,Split,M10,SS	11
37	2730143402	Screw,M10,SS	4

Specifications subject to change without notice







# LIST OF PARTS

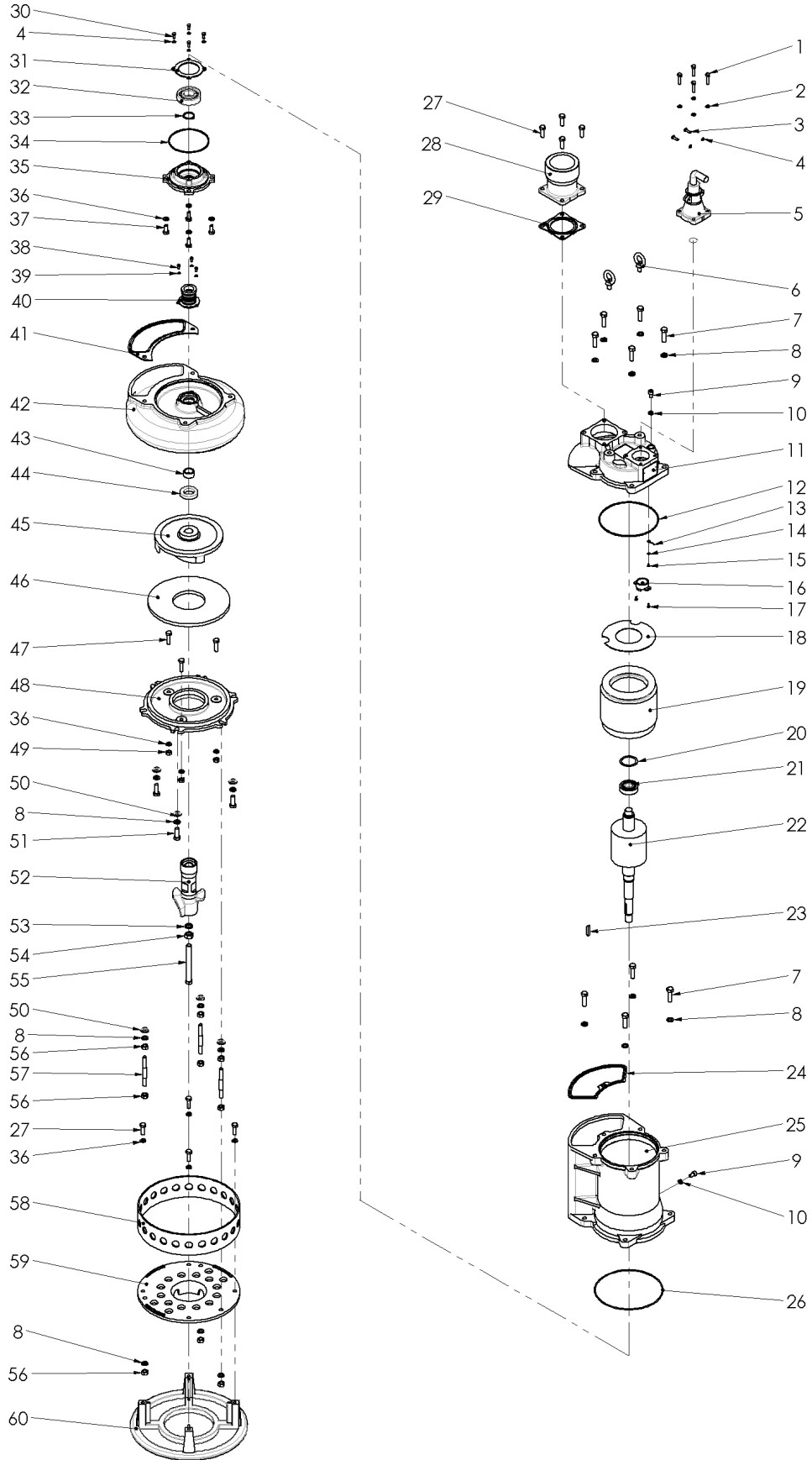
## Slurry Pumps SKR-475

**Drawing Number:** DS-A06-089    **Rev:** 1    **Date:** 2/3/2021

Position	Stancor Part #	Description	Qty.
0	4730100058	Screw Kit,SKR-355,455,475	1
0	4410100058	O-Ring Kit,SKR-355,SKR-455,SKR-475,NBR	1
0	3066105009	Cable gland,SKR-355,455,475,4110,6110,6150	1
1	2730143305	Screw,M8,SS	4
2	2750343006	Lock Washer,Split,M8,SS	4
3	2760330002	Eye Bolt,M12,SKR-337,355,475	2
4	2750343005	Lock Washer,Split,M6,SS	6
5	4811301201	Cable Assembly,8/3G-GC,50FT,Black	1
6	2730143506	Screw,M12,SS	9
7	2730143204	Screw,M6,SS	2
8	2750343008	Lock Washer,Split,M12,SS	18
9	2730343401	Screw,M10,SS	2
10	3045091001	Air/Oil Holes Gasket,NBR	2
11	3004360009A	Upper cover,SKR-355,455,475	1
12	1411005003	O-Ring,NBR	1
13	3080030001	Earth lead,Yellow	1
13	3080010005	Earth lead,Green	2
14	2750730002	Washer,SKR-337,355,455,475,4110,6110,6150	1
15	2730230103	Screw,M4,CS	1
16	1710200016	Thermal Protector,460v,SKR-475	1
17	2730443102	Screw,M4,SS	2
18	3064020002	Insulating sheet,SKR-355,455,475,6220,8220	1
19	3031403102A	Stator,4P,460/3/60,SKR-355,455,475	1
20	2750130007	Wave Washer,Bearing,SKR-355,455,475	1
21	1790100015	Upper Bearing,SKR-355,455,475	1
22	3032482051	Rotor Shaft Assembly,SKR-355,455,475,475	1
23	2770343002	Key,SKR-355,475,4110,6110,6150,6220,8220	1
24	3045031005	Gasket,NBR	1
25	3017360025	Motor frame,SKR-355,455,475	1
26	1411005008	O-Ring,NBR	1
27	2730143404	Screw,M10,NBR	8
28	3001360505	Discharge,4" NPT,SKR-455,475,CI	1
29	3045071009	Discharge Gasket,NBR	1
30	2730143203	Screw,M6,SS	4
31	3065013101	Bearing Shim,SKR-355,455,475	1
32	1790100017	Lower Bearing,SKR-355,455,475	1
33	2760530005	Snap Ring,SKR-355,455,475	1
34	1411004012	O-Ring,NBR	1
35	3019360015	Bearing bracket,SKR-355,475	1
36	2750343007	Lock Washer,Split,M10,SS	11
37	2730143402	Screw,M10,SS	4

Specifications subject to change without notice







# LIST OF PARTS

## Slurry Pumps SKR-4110

**Drawing Number:** DS-A06-090    **Rev:** 1    **Date:** 2/3/2021

Position	Stancor Part #	Description	Qty.
0	4730100059	Screw Kit,SKR-4110	1
0	4410100062	O-Ring Kit,SKR-4110,6110,6150,NBR	1
0	3066105009	Cable gland,SKR-355,455,475,4110,6110,6150	1
1	2730143305	Screw,M8,SS	4
2	2750343006	Lock Washer,Split,M8,SS	4
3	2730143204	Screw,M6,SS	2
4	2750343005	Lock Washer,Split,M6,SS	6
5	4811301201	Cable Assembly,8/3G-GC,50FT,Black	1
6	2760330005	Eye Bolt,M16,SKR-4110,6110,6150	2
7	2730143509	Screw,M12,SS	1
8	2730143507	Screw,M12,SS	5
9	2750343008	Lock Washer,Split,M12,SS	21
10	2730343401	Screw,M10,SS	2
11	3045091001	Air/Oil Holes Gasket,NBR	2
12	3004360011	Upper Cover,SKR-4110,6110,6150	1
13	1710200007	Thermal Protector,460v,SKR-4110,6110	1
14	2730443102	Screw,M4,SS	2
15	2750130009	Wave Washer,Bearing,SKR-4110,6110,6150	1
16	1790100017	Upper Bearing SKR-4110,6110,6150	1
17	3064020004	Insulating sheet,SKR-4110,6110,6150	1
18	3031404102A	Stator,4P,460/3/60,SKR-4110,6110	1
19	3032482052	Rotor Shaft Assembly,SKR-4110,6110,6110	1
20	2760530006	Snap Ring,SKR-4110,6110,6150	1
21	3045031006	Gasket,NBR	1
22	1411005008	O-Ring,NBR	1
23	2730143506	Screw,M12,SS	4
24	3017360027	Motor frame,SKR-4110,6110,6150	1
25	1411006001	O-Ring,NBR	1
26	2730143203	Screw,M6,SS	4
27	3065013102	Bearing Shim,SKR-4110,6110,6150	1
28	1790100018	Lower Bearing,SKR-4110,6110,6150	1
29	1411002008	O-Ring,NBR	1
30	3019360016	Bearing bracket,SKR-4110,6110,6150	1
31	2750343007	Lock Washer,Split,M10,SS	11
32	2730143402	Screw,M10,SS	4
33	2730143504	Screw,M12,SS	9
34	3001360508	Discharge,4" NPT,SKR-4110,CI	1
35	1411008001	O-Ring,Discharge,SKR-6150,BN	1
36	3080030001	Earth lead,Yellow	1
36	3080010005	Earth lead,Green	2
37	2750730002	Washer,SKR-337,355,455,475,4110,6110,6150	1

Specifications subject to change without notice





# LIST OF PARTS

## Slurry Pumps SKR-4110

Drawing Number:

DS-A06-090

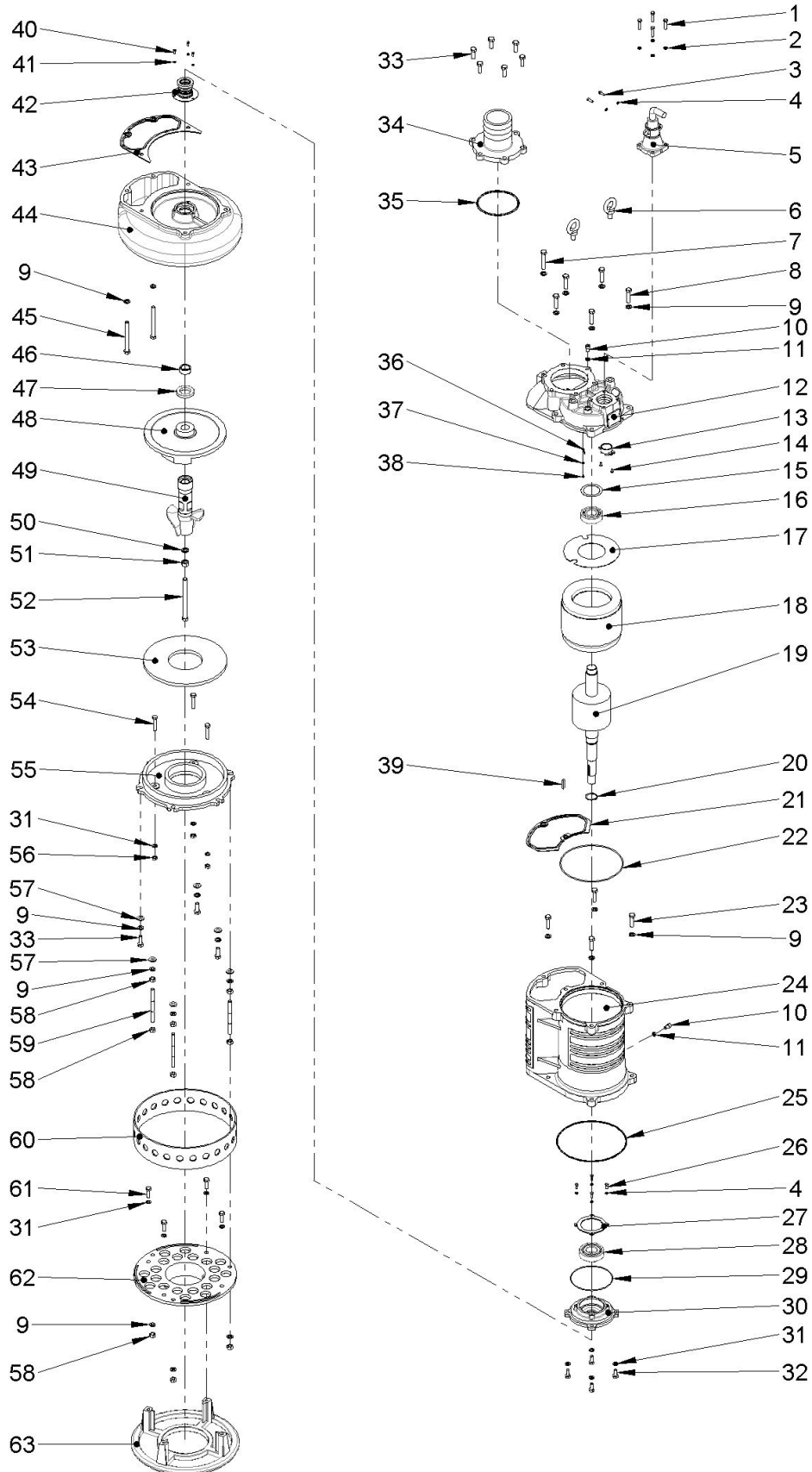
Rev:

1

Date:

2/3/2021

Position	Stancor Part #	Description	Qty.
38	2730230103	Screw,M4,CS	1
39	2770343002	Key,SKR-355,475,4110,6110,6150,6220,8220	1
40	2730143102	Screw,M5,SS	3
41	2750343004	Lock Washer,Split,M5,SS	3
42	1430203009	Mechanical Seal,Double,SKR-4110,6110,6150	1
43	3045041005	Pump Casing Gasket,NBR	1
44	3010440003	Pump Casing,SKR-4110,6110,6150	1
45	2730143511	Screw,M12,SS	2
46	3067450002	Shaft sleeve,SKR-4110,6110,6150	1
47	1424301014	Oil Seal,SKR-4110,6110,6150	1
48	3015420209	Impeller,SKR-4110	1
49	3016420006	Agitator,SKR-4110,6110,6150	1
50	2750343009	Lock Washer,split,M16,SS	1
51	2740143006	Nut,Hex,M16x2,SS	1
52	3073143502	Screw,M126,SS	1
53	3006420006	Wear Plate,SKR-4110,6110	1
54	2730143408	Screw,M10,SS	3
55	3012360008	Inlet Plate,SKR-4110	1
56	2740143004	Nut,Hex,M10x1.5,SS	3
57	2750243011	Washer,SKR-355,475,4110,6110,6150,6220,8220	6
58	2740143005	Nut,Hex,M12x1.75,SS	9
59	3073243405	Screw,M12,SS	3
60	3013300008	Strainer,SKR-4110	1
61	2730143404	Screw,M10,NBR	4
62	3008350003	Strainer Center,SKR-4110,6110,6150	1
63	3009350016	Base Plate,SKR-355,475,4110,6150	1





# LIST OF PARTS

## Slurry Pumps SKR-6110

**Drawing Number:** DS-A06-091    **Rev:** 1    **Date:** 2/3/2021

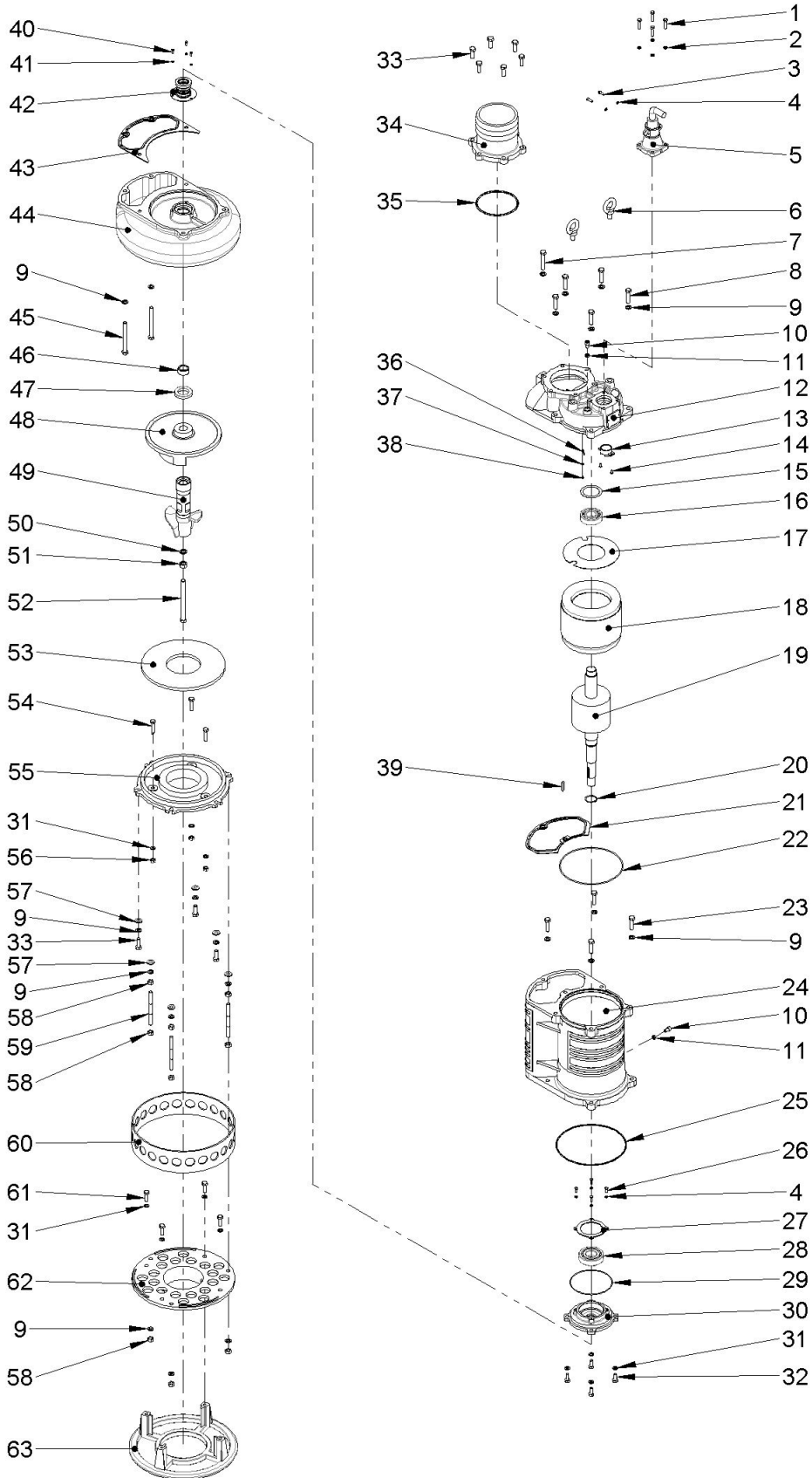
Position	Stancor Part #	Description	Qty.
0	4730100062	Screw Kit	1
0	4410100062	O-Ring Kit,SKR-4110,6110,6150,NBR	1
0	3066105009	Cable Assembly,8/3G-GC,50FT,Black	1
1	2730143305	Screw,M8,SS	4
2	2750343006	Lock Washer,Split,M8,SS	4
3	2730143204	Screw,M6,SS	2
4	2750343005	Lock Washer,Split,M6,SS	6
5	4811301201	Cable,8/3G-GC,50FT,Black	1
6	2760330005	Eye Bolt,M16,SKR-4110,6110,6150	2
7	2730143509	Screw,M12,SS	1
8	2730143507	Screw,M12,SS	5
9	2750343008	Lock Washer,Split,M12,SS	21
10	2730343401	Screw,M10,SS	2
11	3045091001	Air/Oil Holes Gasket,NBR	2
12	3004360011	Upper Cover,SKR-4110,6110,6150	1
13	1710200007	Thermal Protector,460v,SKR-4110,6110	1
14	2730443102	Screw,M4,SS	2
15	2750130009	Wave Washer,Bearing,SKR-4110,6110,6150	1
16	1790100017	Upper Bearing SKR-4110,6110,6150	1
17	3064020004	Insulating sheet,SKR-4110,6110,6150	1
18	3031404102A	Stator,4P,460/3/60,SKR-4110,6110	1
19	3032482052	Rotor Shaft Assembly,SKR-4110,6110,6110	1
20	2760530006	Snap Ring,SKR-4110,6110,6150	1
21	3045031006	Gasket,NBR	1
22	1411005008	O-Ring,NBR	1
23	2730143506	Screw,M12,SS	4
24	3017360027	Motor frame,SKR-4110,6110,6150	1
25	1411006001	O-Ring,NBR	1
26	2730143203	Screw,M6,SS	4
27	3065013102	Bearing Shim,SKR-4110,6110,6150	1
28	1790100018	Lower Bearing,SKR-4110,6110,6150	1
29	1411002008	O-Ring,NBR	1
30	3019360016	Bearing bracket,SKR-4110,6110,6150	1
31	2750343007	Lock Washer,Split,M10,SS	11
32	2730143402	Screw,M10,SS	4
33	2730143504	Screw,M12,SS	9
34	3001360607	Discharge,6in NPT,CI	1
35	1411008001	O-Ring,Discharge,SKR-6150,BN	1
36	3080010005	Earth lead,Green	2
36	3080030001	Earth lead,Yellow	1
37	2750730002	Washer,SKR-337,355,455,475,4110,6110,6150	1

Specifications subject to change without notice

**LIST OF PARTS****Slurry Pumps SKR-6110**

<b>Drawing Number:</b>	DS-A06-091	<b>Rev:</b>	<b>1</b>	<b>Date:</b>	2/3/2021
------------------------	------------	-------------	----------	--------------	----------

Position	Stancor Part #	Description	Qty.
38	2730230103	Screw,M4,CS	1
39	2770343002	Key,SKR-355,475,4110,6110,6150,6220,8220	1
40	2730143102	Screw,M5,SS	3
41	2750343004	Lock Washer,Split,M5,SS	3
42	1430203009	Mechanical Seal,Double,SKR-4110,6110,6150	1
43	3045041005	Pump Casing Gasket,NBR	1
44	3010440003	Pump Casing,SKR-4110,6110,6150	1
45	2730143511	Screw,M12,SS	2
46	3067450002	Shaft sleeve,SKR-4110,6110,6150	1
47	1424301014	Oil Seal,SKR-4110,6110,6150	1
48	3015420211	Impeller	1
49	3016420006	Agitator,SKR-4110,6110,6150	1
50	2750343009	Lock Washer,split,M16,SS	1
51	2740143006	Nut,Hex,M16x2,SS	1
52	3073143502	Screw,M126,SS	1
53	3006420006	Wear Plate,SKR-4110,6110	1
54	2730143406	Screw,M10,SS	3
55	3012360009	Inlet Plate,CI	1
56	2740143004	Nut,Hex,M10x1.5,SS	3
57	2750243011	Washer,SKR-355,475,4110,6110,6150,6220,8220	6
58	2740143005	Nut,Hex,M12x1.75,SS	9
59	3073243405	Screw,M12,SS	3
60	3013300009	Strainer,CS	1
61	2730143404	Screw,M10,NBR	4
62	3008350003	Strainer Center,SKR-4110,6110,6150	1
63	3009350016	Base Plate,SKR-355,475,4110,6150	1





# LIST OF PARTS

## Slurry Pumps SKR-6150

**Drawing Number:** DS-A06-092    **Rev:** 1    **Date:** 2/3/2021

Position	Stancor Part #	Description	Qty.
0	4730100062	Screw Kit	1
0	4410100062	O-Ring Kit,SKR-4110,6110,6150,NBR	1
0	3066105009	Cable gland,SKR-355,455,475,4110,6110,6150	1
1	2730143305	Screw,M8,SS	4
2	2750343006	Lock Washer,Split,M8,SS	4
3	2730143204	Screw,M6,SS	2
4	2750343005	Lock Washer,Split,M6,SS	6
5	4811301201	Cable Assembly,8/3G-GC,50FT,Black	1
6	2760330005	Eye Bolt,M16,SKR-4110,6110,6150	2
7	2730143509	Screw,M12,SS	1
8	2730143507	Screw,M12,SS	5
9	2750343008	Lock Washer,Split,M12,SS	21
10	2730343401	Screw,M10,SS	2
11	3045091001	Air/Oil Holes Gasket,NBR	2
12	3004360011	Upper Cover,SKR-4110,6110,6150	1
13	1710200008	Thermal Protector	1
14	2730443102	Screw,M4,CS	2
15	2750130009	Wave Washer,Bearing,SKR-4110,6110,6150	1
16	1790100017	Upper Bearing SKR-4110,6110,6150	1
17	3064020004	Insulating sheet,SKR-4110,6110,6150	1
18	3031404202A	Stator,4P,460/3/60,SKR-6150	1
19	3032482053	Rotor Shaft Assembly	1
20	2760530006	Snap Ring,SKR-4110,6110,6150	1
21	3045031006	Gasket,NBR	1
22	1411005008	O-Ring,NBR	1
23	2730143506	Screw,M12,SS	4
24	3017360027	Motor frame,SKR-4110,6110,6150	1
25	1411006001	O-Ring,NBR	1
26	2730143203	Screw,M6,SS	4
27	3065013102	Bearing Shim,SKR-4110,6110,6150	1
28	1790100018	Lower Bearing,SKR-4110,6110,6150	1
29	1411002008	O-Ring,NBR	1
30	3019360016	Bearing bracket,SKR-4110,6110,6150	1
31	2750343007	Lock Washer,Split,M10,SS	11
32	2730143402	Screw,M10,SS	4
33	2730143504	Screw,M12,SS	9
34	3001360607	Discharge,6in NPT,CI	1
35	1411008001	O-Ring,Discharge,SKR-6150,BN	1
36	3080010005	Earth lead,Green	2
36	3080030001	Earth lead,Yellow	1
37	2750730002	Washer,SKR-337,355,455,475,4110,6110,6150	1

Specifications subject to change without notice

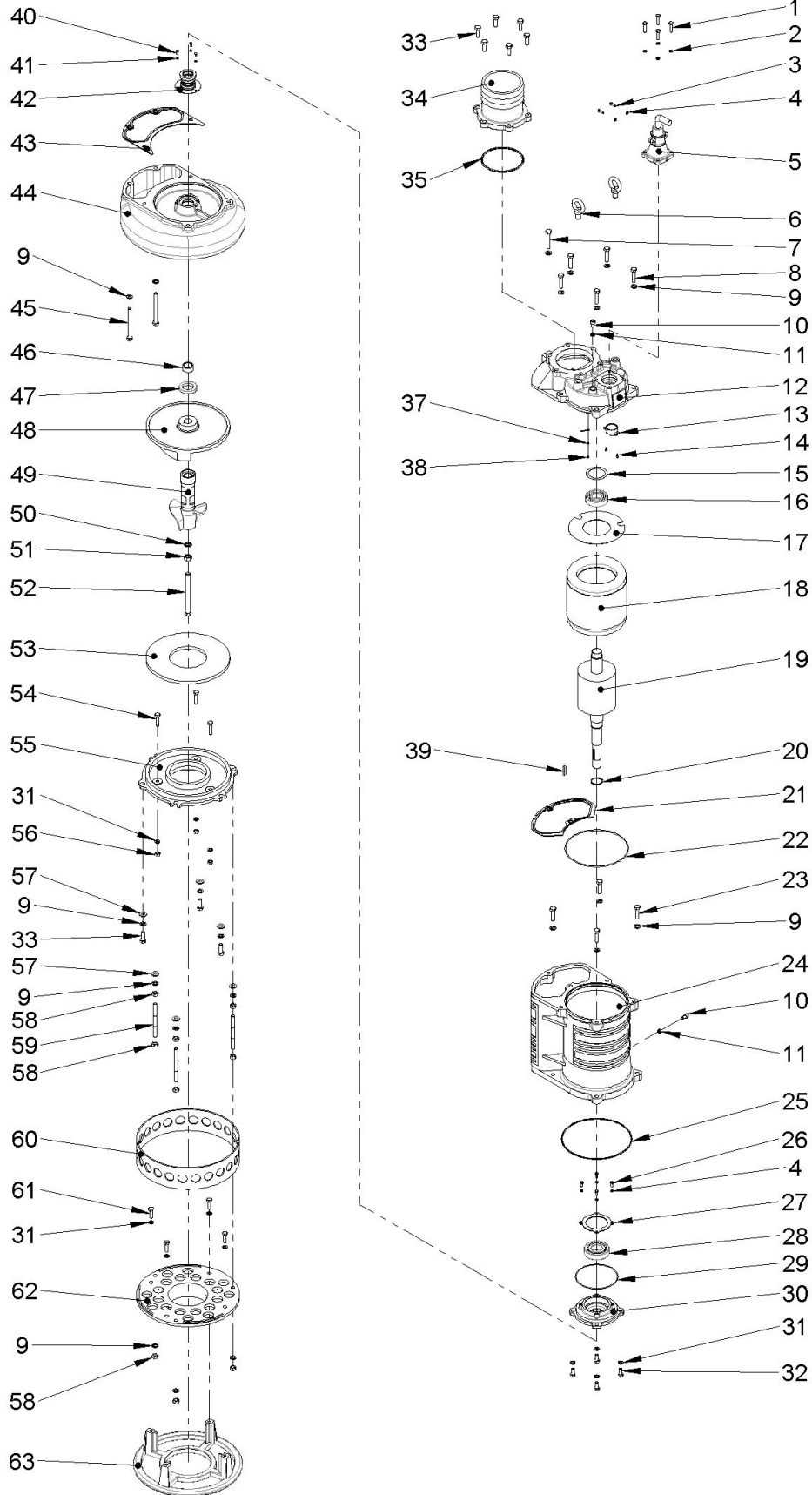


# LIST OF PARTS

## Slurry Pumps SKR-6150

<b>Drawing Number:</b>	DS-A06-092	<b>Rev:</b>	1	<b>Date:</b>	2/3/2021
------------------------	------------	-------------	---	--------------	----------

Position	Stancor Part #	Description	Qty.
38	2730230103	Screw,M4,CS	1
39	2770343002	Key,SKR-355,475,4110,6110,6150,6220,8220	1
40	2730143102	Screw,M5,SS	3
41	2750343004	Lock Washer,Split,M5,SS	3
42	1430203009	Mechanical Seal,Double,SKR-4110,6110,6150	1
43	3045041005	Pump Casing Gasket,NBR	1
44	3010440003	Pump Casing,SKR-4110,6110,6150	1
45	2730143511	Screw,M12,SS	2
46	3067450002	Shaft sleeve,SKR-4110,6110,6150	1
47	1424301014	Oil Seal,SKR-4110,6110,6150	1
48	3015420215	Impeller	1
49	3016420006	Agitator,SKR-4110,6110,6150	1
50	2750343009	Lock Washer,split,M16,SS	1
51	2740143006	Nut,Hex,M16x2,SS	1
52	3073143502	Screw,M126,SS	1
53	3006420007	Wear Plate	1
54	2730143406	Screw,M10,SS	3
55	3012360010	Inlet Plate,CI	1
56	2740143004	Nut,Hex,M10x1.5,SS	3
57	2750243011	Washer,SKR-355,475,4110,6110,6150,6220,8220	6
58	2740143005	Nut,Hex,M12x1.75,SS	9
59	3073243405	Screw,M12,SS	3
60	3013300009	Strainer,CS	1
61	2730143404	Screw,M10,NBR	4
62	3008350003	Strainer Center,SKR-4110,6110,6150	1
63	3009350016	Base Plate,SKR-355,475,4110,6150	1







# LIST OF PARTS

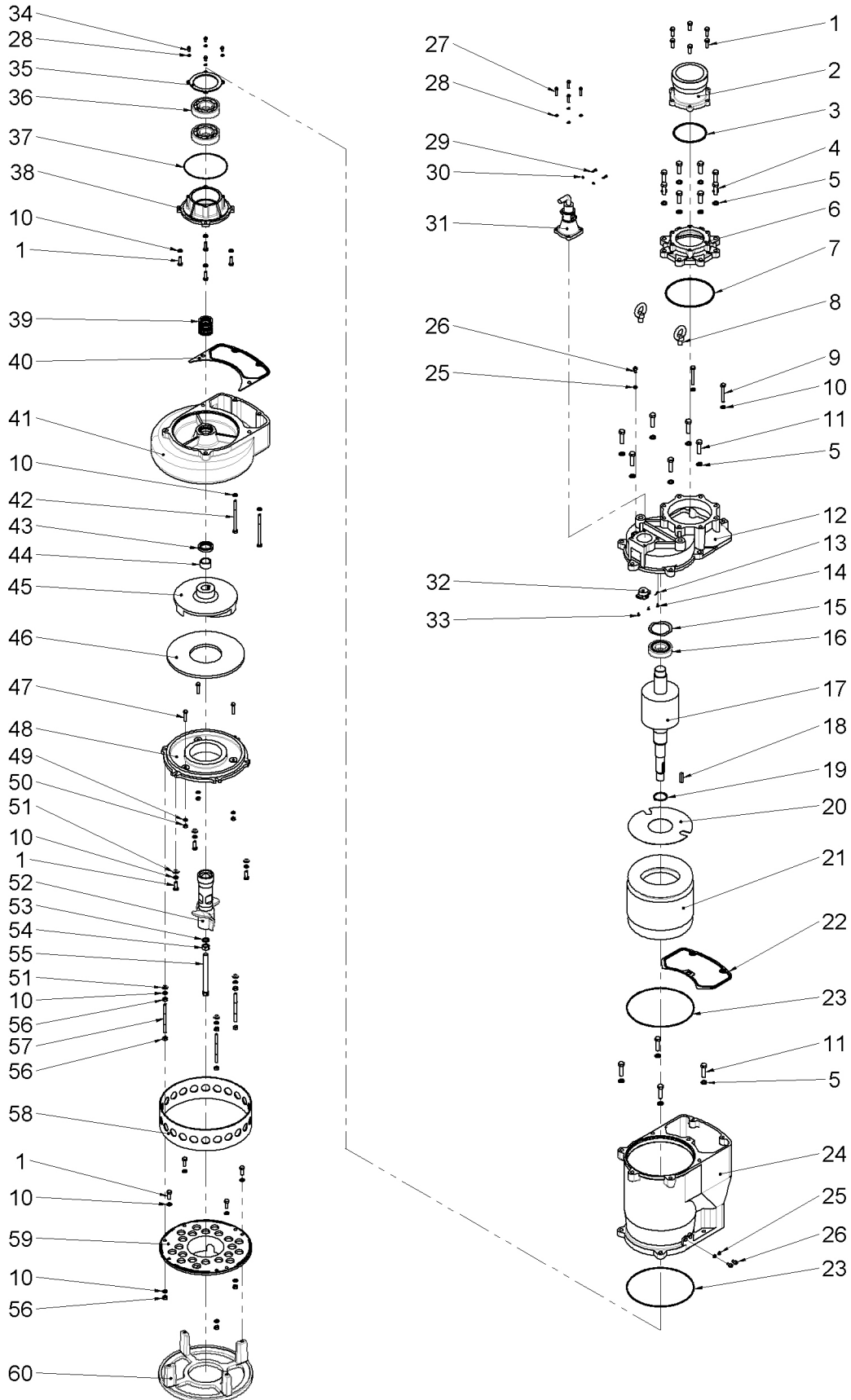
## Slurry Pumps SKR-6220

**Drawing Number:** DS-A06-093    **Rev:** 1    **Date:** 2/3/2021

Position	Stancor Part #	Description	Qty.
0	4730100063	Screw Kit,SKR-6220	1
0	4410100063	O-Ring Kit,SKR-6220,NBR	1
0	3066106003	Cable Gland,SKR-6220,8220	1
1	2730143504	Screw,M12,SS	17
2	3001360607	Discharge,6" NPT,SKR-6110,6150,6220CI	1
3	1411008001	O-Ring,Discharge,SKR-6150,BN	1
4	2730143603	Screw,M16,SS	8
5	2750343009	Lock Washer,split,M16,SS	18
6	3014360019	Flange adapter,SKR-6220	1
7	1411008003	O-Ring,NBR	1
8	2760330006	Eye Bolt,M20,SKR-6220,8220	2
9	2730143510	Screw,M12,SS	2
10	2750343008	Lock Washer,Split,M12,SS	21
11	2730143604	Screw,M16,SS	10
12	3004360034	Upper Cover,SKR-6220,8220	1
13	3080030001	Earth lead,Yellow	1
13	3080010005	Earth lead,Green	2
14	2730243201	Screw,M5,SS	1
15	2750130011	Wave Washer,Bearing,SKR-6220,8220	1
16	1790100020	Upper Bearing,SKR-6220,8220	1
17	3032482054	Rotor Shaft Assembly,SKR-6220,8220,8220	1
18	2770343003	Key,SKR-6220,8220	1
19	2760530009	Snap Ring,SKR-6220,8220	1
20	3064020006	Insulating sheet,SKR-6220,8220	1
21	3031405102A	Stator,4P,460/3/60,SKR-6220,8220	1
22	3045031002	Gasket,NBR	1
23	1411006004	O-Ring,NBR	2
24	3017360030	Motor frame,SKR-6220,8220	1
25	3045091001	Air/Oil Holes Gasket,NBR	3
26	2730343401	Screw,M10,SS	3
27	2730143305	Screw,M8,SS	4
28	2750343006	Lock Washer,Split,M8,SS	8
29	2730143204	Screw,M6,SS	2
30	2750343005	Lock Washer,Split,M6,SS	2
31	4811301301	Cable Assembly,8/3G-GC,50FT,Black	1
32	1710200009	Thermal Protector,460v,SKR-6220,8220	1
33	2730443102	Screw,M4,CS	2
34	2730143301	Screw,M8,SS	4
35	3065013103	Bearing Shim,SKR-6220,8220	1
36	1790100021	Lower Bearing,SKR-6220,8220	2
37	1411004013	O-Ring,NBR	1

Specifications subject to change without notice







# LIST OF PARTS

## Slurry Pumps SKR-8220

<b>Drawing Number:</b>	DS-A06-094	<b>Rev:</b>	1	<b>Date:</b>	2/3/2021
------------------------	------------	-------------	---	--------------	----------

Position	Stancor Part #	Description	Qty.
0	4730100064	Screw Kit	1
0	4410100064	O-Ring & Gasket Kit,NBR	1
0	3066106003	Cable gland,SKR-6220,8220	1
1	2730143603	Screw,M16,SS	8
2	3001360706	Discharge,8in NPT,CI	1
3	1411008003	O-Ring,NBR	1
4	2760330006	Eye Bolt,M20,SKR-6220,8220	2
5	2730143510	Screw,M12,SS	2
6	2750343008	Lock Washer,Split,M12,SS	21
7	2730143604	Screw,M16,SS	10
8	2750343009	Lock Washer,split,M16,SS	10
9	3004360034	Upper Cover,SKR-6220,8220	1
10	3080030001	Earth lead,Yellow	1
10	3080010005	Earth lead,Green	2
11	2730243201	Screw,M5,SS	1
12	2750130011	Wave Washer,Bearing,SKR-6220,8220	1
13	1790100020	Upper Bearing,SKR-6220,8220	1
14	3032482054	Rotor Shaft Assembly,SKR-6220,8220,8220	1
15	2770343003	Key,SKR-6220,8220	1
16	2760530009	Snap Ring,SKR-6220,8220	1
17	3064020006	Insulating sheet,SKR-6220,8220	1
18	3031405102A	Stator,4P,460/3/60,SKR-6220,8220	1
19	3045031002	Gasket,NBR	1
20	1411006004	O-Ring,NBR	2
21	3017360030	Motor frame,SKR-6220,8220	1
22	3045091001	Air/Oil Holes Gasket,NBR	3
23	2730343401	Screw,M10,SS	3
24	2730143305	Screw,M8,SS	4
25	2750343006	Lock Washer,Split,M8,SS	8
26	2730143204	Screw,M6,SS	2
27	2750343005	Lock Washer,Split,M6,SS	2
28	4811301301	Cable Assembly,8/3G-GC,50FT,Black	1
29	1710200009	Thermal Protector,460v,SKR-6220,8220	1
30	2730443102	Screw,M4,CS	2
31	2730143301	Screw,M8,SS	4
32	3065013103	Bearing Shim,SKR-6220,8220	1
33	1790100021	Lower Bearing,SKR-6220,8220	2
34	1411004013	O-Ring,NBR	1
35	3019360039	Bearing bracket,SKR-6220,8220	1
36	2730143504	Screw,M12,SS	11
37	1430203011	Mechanical Seal,Double,SKR-6220,8220	1

Specifications subject to change without notice



