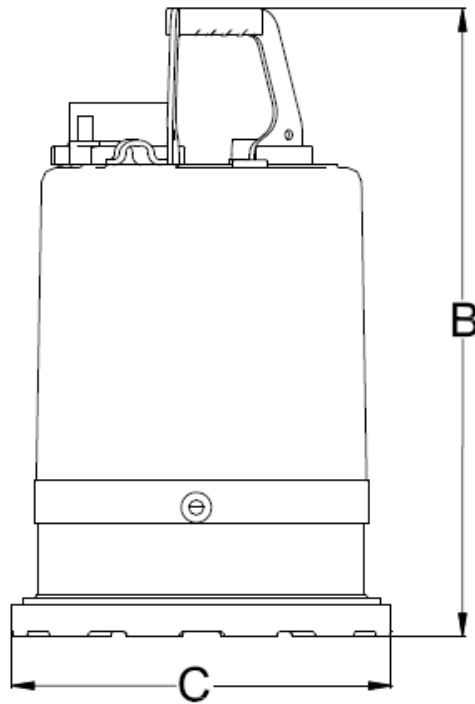
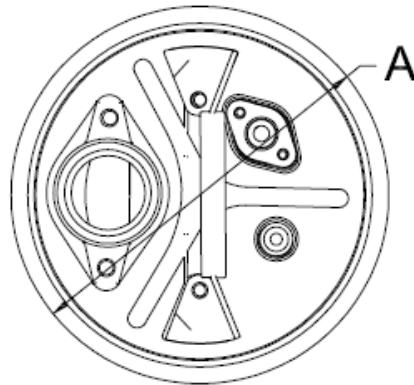


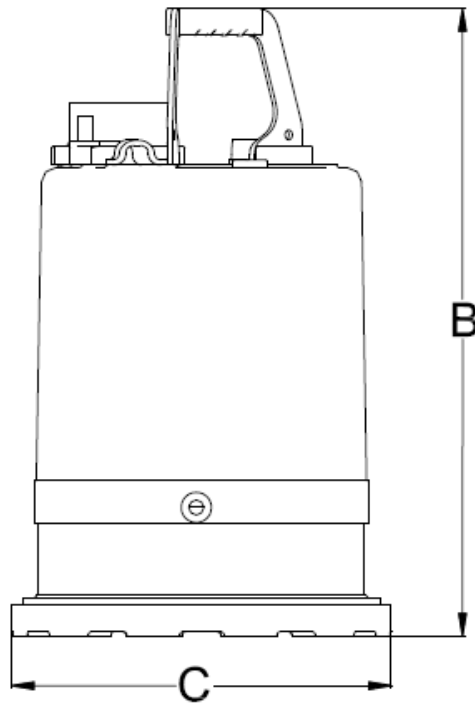
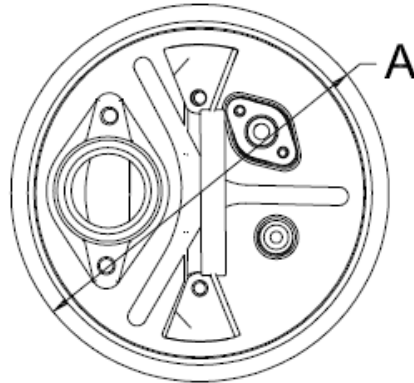
**SL-75**



<b>TYPE</b>	<b>Discharge</b>	<b>A</b>	<b>B</b>	<b>C</b>
<b>Dimensions</b>	2" NPT Female	8.43"	13.82"	8.43"

Specifications subject to change without notice

**SL-100**



Type	Discharge	A	B	C
<b>Dimensions</b>	2" NPT Female	8.43"	14.80"	8.43"

Specifications subject to change without notice