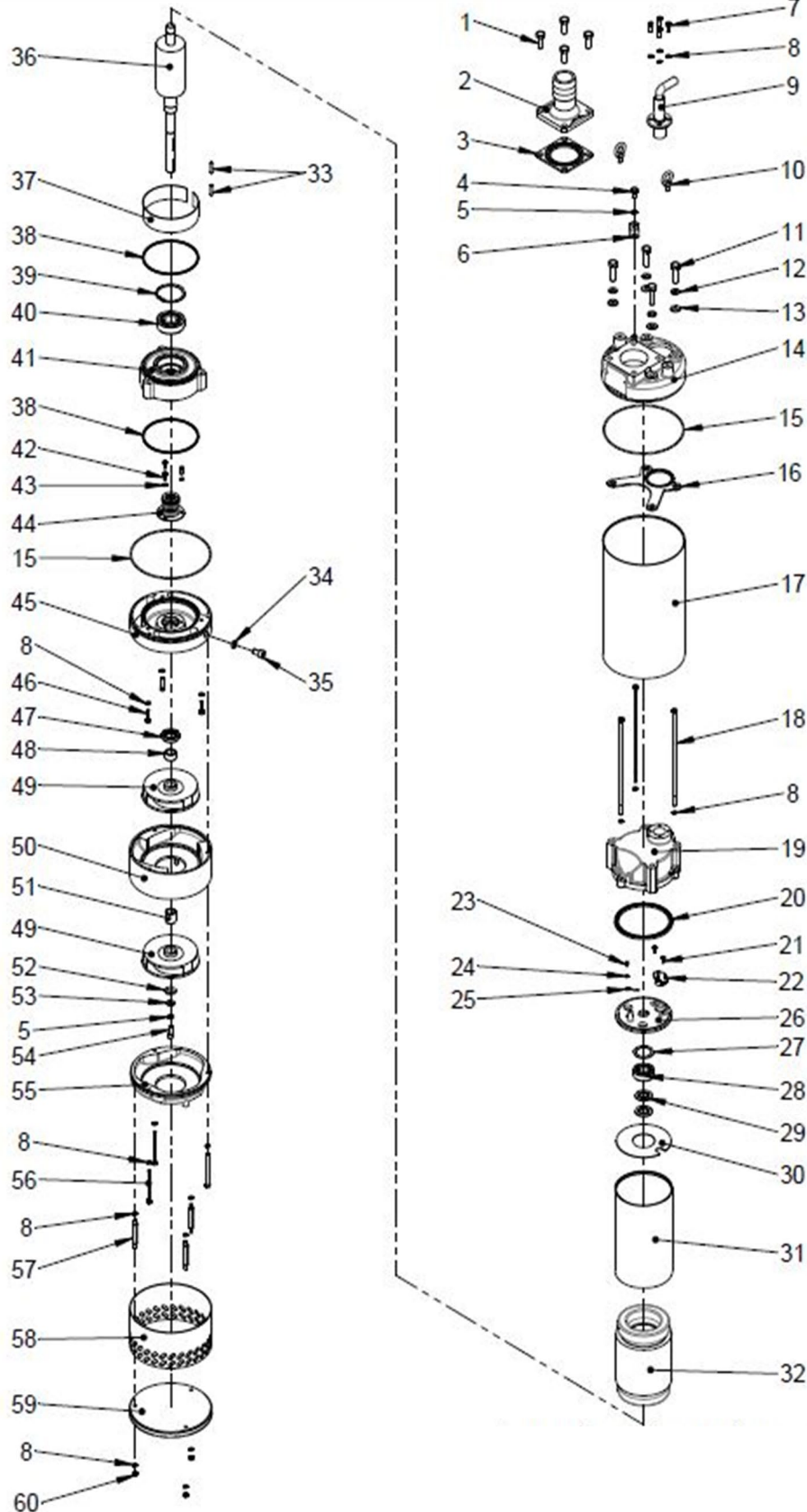


Position	Stancor Part #	Description	Qty.
1	2730143403	Screw	4
2	3001360307	Discharge head	1
3	3045071008	Gasket	1
4	2730143301	Screw	1
5	2750343006	Spring washer	2
6	3065034301	Shim	1
7	2730343202	Screw	4
8	2750343005	Spring washer	19
9	4811401101	Cable	1
10	2760343002	Rings	2
11	2730143405	Screw	4
12	2750343007	Spring washer	4
13	2750243007	Washer	4
14	3004360041	Upper cover	1
15	1411002005	O-ring	2
16	3045021012	Gasket	1
17	3018430026	Outer case	1
18	3073143106	Screw	3
19	3005360012	Motor cover	1
20	3045031007	Gasket	1
21	2730443102	Screw	2
22	1710200005	Thermal protector	1
23	2730230103	Screw	1
24	2750730002	Washer	1
25	3080010008	Earth lead	1
27	3080030002	Earth lead	1
26	3003360009	Switch plate	1
27	2750130005	Wave washer	1
28	1790100013	Bearing	1
29	2750830006	Washer	2
30	3064040001	Insulating sheet	1
31	3017430011	Motor frame	1
32	3031302502	Stator 230V, 3 Phase	1
32	3031302501	Stator 460V, 3 Phase	1
33	2770143012	Key	2
34	3045091001	Gasket	1
35	2730343401	Screw	1
36	3032482068	Shaft/Rotor without Bearing	1
37	3065023104	Shim	1
38	1411002003	O-ring	2
39	2760430002	C'ing	1
40	1790100015	Bearing	1
41	3019360023	Bearing bracket	1
42	2730143102	Screw	3
43	2750343004	Spring washer	3
44	1430203005	Mech.seal	1
45	3011360029	Seal bracket	1



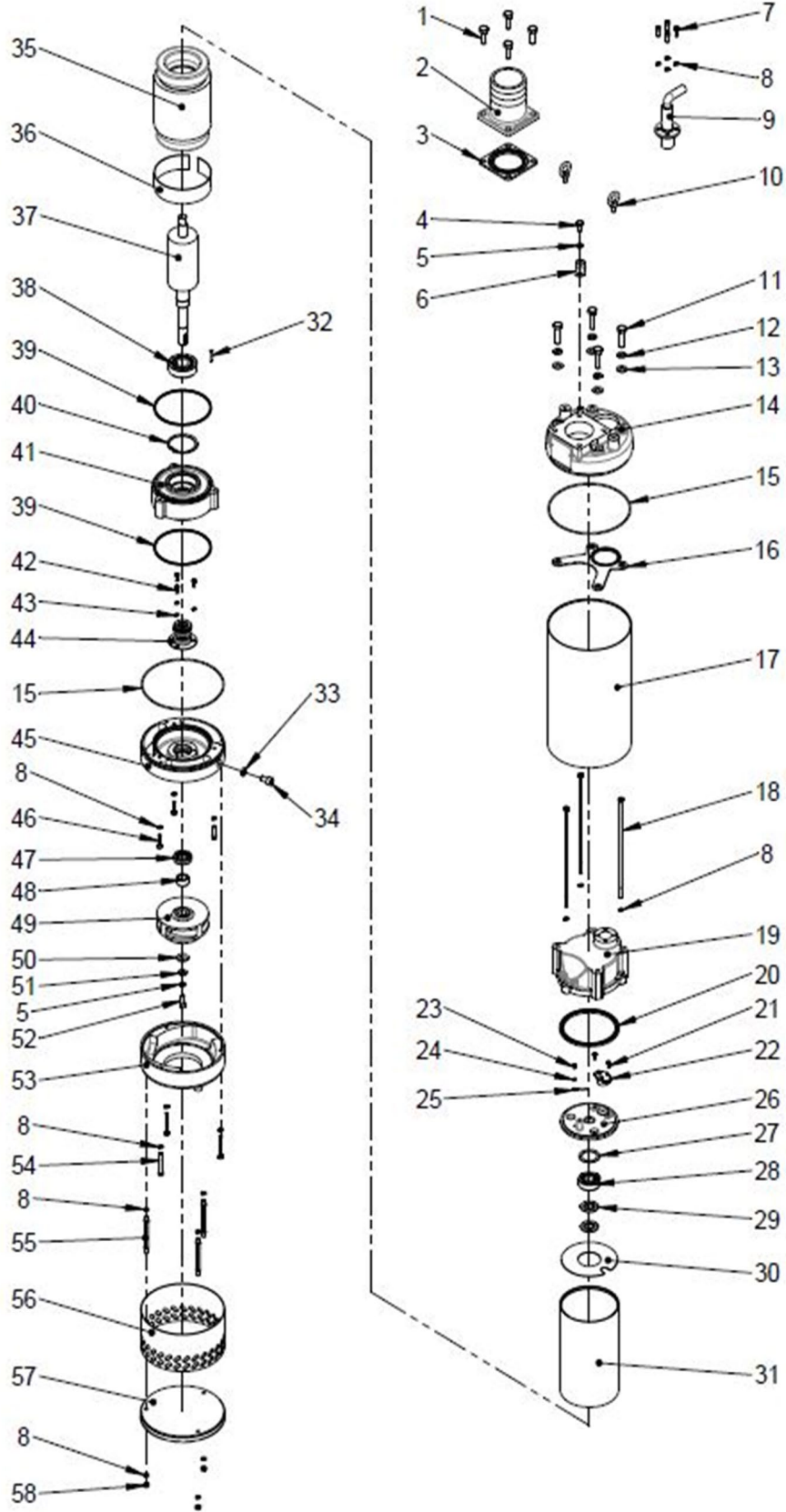


LIST OF PARTS

Well Casing Pump WCP-400 HV

Dwg: DS-A28-017 Rev: 2 Date: 7/20

Position	Stancor Part #	Description	Qty.
1	2730143403	Screw	4
2	3001360410	Discharge head	1
3	3045071008	Gasket	1
4	2730143301	Screw	1
5	2750343006	Spring washer	2
6	3065034301	Shim	1
7	2730343202	Screw	4
8	2750343005	Spring washer	19
9	4811401101	Cable	1
10	2760343002	Rings	2
11	2730143405	Screw	4
12	2750343007	Spring washer	4
13	2750243007	Washer	4
14	3004360041	Upper cover	1
15	1411002005	O'ring	2
16	3045021012	Gasket	1
17	3018430026	Outer case	1
18	3073143106	Screw	3
19	3005360012	Motor cover	1
20	3045031007	Gasket	1
21	2730443102	Screw	2
22	1710200005	Thermal protector	1
23	2730230103	Screw	1
24	2750730002	Washer	1
25	3080010008	Earth lead	1
25	3080030002	Earth lead	1
26	3003360009	Switch plate	1
27	2750130005	Wave washer	1
28	1790100013	Bearing	1
29	2750830006	Washer	2
30	3064040001	Insulating sheet	1
31	3017430011	Motor frame	1
32	2770143012	Key	1
33	3045091001	Gasket	1
34	2730343401	Screw	1
35	3031302502	Stator 230V, 3 Phase	1
35	3031302501	Stator 460V,3 Phase	1
36	3065023104	Shim	1
37	3032482069	Shaft/Rotor without Bearing	1
38	1790100015	Bearing	1
39	1411002003	O'ring	2
40	2760430002	C'ing	1
41	3019360023	Bearing bracket	1
42	2730143102	Screw	3
43	2750343004	Spring washer	3
44	1430203005	Mech.seal	1
45	3011360029	Seal bracket	1



Position	Stancor Part #	Description	Qty.
1	2730143404	Screw	4
2	3001360411	Discharge head	1
3	3045071009	Gasket	1
4	2730343202	Screw	4
5	2750343005	Spring washer	4
6	4811401401	Cable	1
7	2760330004	Rings	2
8	2730143405	Screw	3
9	2750343007	Spring washer	4
10	2750243007	Washer	3
11	2730143401	Screw	1
12	3065034301	Shim	1
13	3004350001B	Upper cover	1
14	3045021005	Gasket	1
15	3073143208	Screw	4
16	2750343006	Spring washer	24
17	3005360015	Motor cover	1
18	1411004008	O-ring	2
19	2730230103	Screw	1
20	2750730002	Washer	1
21	3080010005	Earth lead	1
21	3080030001	Earth lead	1
22	2730443102	Screw	2
23	1710200008	Thermal protector	1
24	3003360010	Switch plate	1
25	2750130006	Wave washer	1
26	1790100014	Bearing	1
27	3064010003	Insulating sheet	1
28	3031310101A	Stator 460V, 3phase	1
28	3031310102A	Stator 230V, 3phase	1
29	3065023108	Shim	1
30	3032492002	Shaft/Rotor without Bearing	1
31	2770143007	Key	2
32	3017430022	Motor frame	1
33	3045081003	Gasket	2
34	3018430034	Outer case	1
35	2730143102	Screw	6
36	2750343004	Spring washer	6
37	3065013105	Shim	1
38	1790100016	Bearing	2
39	1411002009	O-ring	1
40	2730143304	Screw	4
41	3019360029	Bearing bracket	1
42	1430203008	Mech.seal	1
43	2730343401	Screw	1
44	3045091001	Gasket	1
45	3011360030	Seal bracket	1



LIST OF PARTS

Well Casing Pump WCP-1100 HH

Dwg: DS-A28-013 **Rev:** 2 **Date:** 7/20

Position	Stancor Part #	Description	Qty.
46	1424301012	Oil seal	2
47	3067430010	Shaft sleeve	1
48	3015420305	Impeller	2
49	1411005009	O-ring	3
50	3010360041	Pump casing	1
51	2730343304	Screw	4
52	3010360042	Pump Casing	1
53	3067430011	Shaft sleeve	1
54	2730343303	Screw	4
55	3075023002	Washer	1
56	2750343008	Spring washer	1
57	2730343501	Screw	1
58	3012360032	Inlet plate	1
59	2730143303	Screw	4
60	3013430004	Strainer	1
61	3009350006	Base plate	1
62	2750243002	Washer	8
63	2730143308	Screw	4

