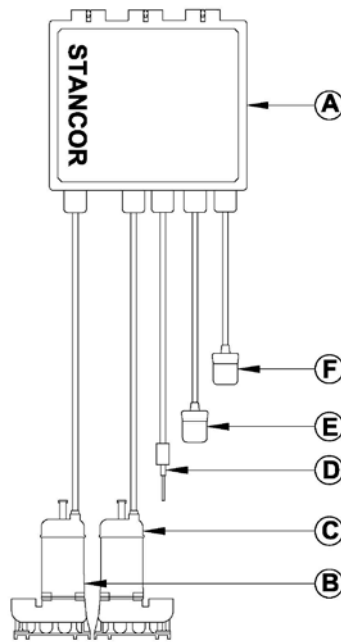


Construction

Motor Design	Induction	Motor Housing	Stainless Steel
Motor Type	Enclosed submersible	Volute	Cast Iron
Insulation Class	Class B	External Hardware	Stainless Steel
Motor Protection	Bi-metallic Thermal Switch	O-Rings	Nitrile (Buna N)
Bi-Metallic Temp Trip	120° C ± 5° C	Motor Shaft	Stainless Steel
Max Fluid temp	104°F (40°C)	Impeller	Cast Iron
Upper Shaft Seal	Carbon/Ceramic	Lower Shaft Seal	Sic/Sic

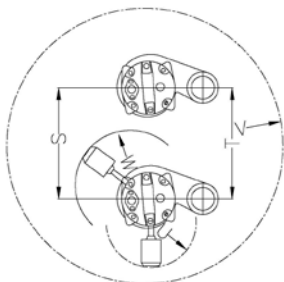
Configurations



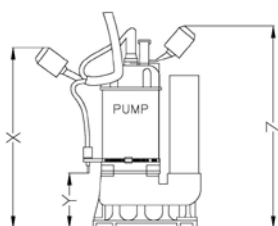
Item	Description
A	Control Panel
B	Pump A*
C	Pump B*
D	Oil Probe*
E	ON Float*
F	High Float*

*16' Standard (Consult Factory for Additional Lengths).

Installation Dimensions



OPTION A *



Description	Item	SE-40	SE-50	SE-100
Min. Pump Dist.**	S	14.1"	14.1"	14.1"
Min. Fitting Dist.***	T	11"	11"	11"
High Float Radius	U	10.6"	10.6"	10.6"
Min. Sump Ø	V	21.7"	21.7"	21.7"
ON Float Radius	W	10.6"	10.6"	10.6"
Pump ON	X	12"	13"	14.9"
Pump OFF	Y	3.25"	3.25"	3.25"
High Alarm	Z	16"	17"	20"

*Standard as shipped from factory.

**Minimum distance required for proper pump performance.

***Fitting dimensions are based on ANSI/ASME B16.3 standards.

Factory minimum recommended sump size is 36" x 36" x 24".