

Quick **return on investment** and improved working conditions were essential to this city's wastewater team

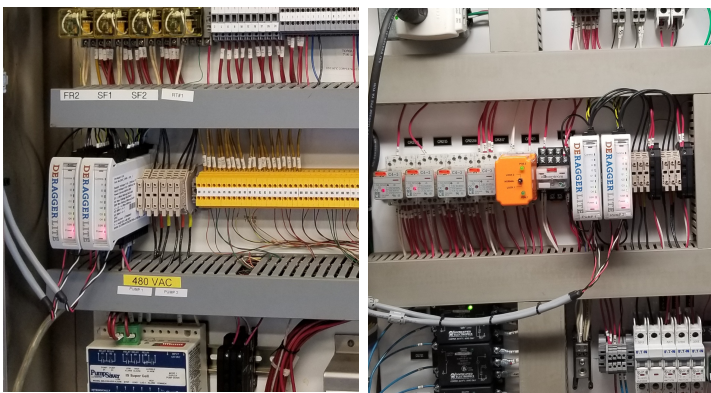
Problem

Pump ragging was a regular problem for the wastewater team at the City of Greensboro, NC, with over 285,000 residents, processing over 30MGD. Clearing clogs exposed the crew to **dangerous sharps** and raw sewage. With substantial time and money spent lifting pumps and **removing clogs**, other essential maintenance projects were delayed or neglected.

The team recognized the need for a safer and cost-effective solution to ragging that could be implemented quickly for a short return on investment (ROI).

“The DERAGGER has been great. It was easy to install and has worked amazingly well.”

- Joshua Younts, Supervisor
Construction & Maintenance, Water Resources
City of Greensboro



Solution

The Greensboro team installed **six DERAGGER** systems in the summer of 2017. By enabling **Real Time Pump Protection™** to detect rags and run a clean cycle, DERAGGER[®] clears the first rag and prevents a clogged pump. Since installation, all ragging has stopped and pumps no longer need to be lifted to clear clogs - **zero ragging**. Now, time and money can be applied to other important maintenance projects. The DERAGGER system delivered a short ROI and greatly reduced safety risks for employees.



DERAGGER[®]

MONITOR | PROTECT | CONTROL™



DERAGGER Lite™
Anti-ragging device
eradicates pump clogs



DERAGGER+™
Real Time Pump Protection™



PowerMonitor™
Power analyzer &
data logger

MONITOR

| | | | |
|--|--|---|---|
| SCADA Ready | | ● | ● |
| Data Logging (20 years at 5s intervals) | | ● | ● |
| Derived Flow | | ● | |

PROTECT

| | | | |
|--------------------|---|---|---|
| Anti-ragging | ● | ● | |
| Motor Saver | ● | ● | ● |
| Dry Run Protection | | ● | ● |

CONTROL

| | | | |
|----------------|---|---|---|
| 0 - 1000+ HP | ● | ● | ● |
| VFD Compatible | ● | ● | ● |
| Wet Well Clean | | ● | |
| Odor Control | | ● | |
| PRO Compatible | | ● | ● |



DERAGGER Pro™

Paired with **DERAGGER+™** or **PowerMonitor™**, simplifies pump station controlling and spreads intelligence across three devices for system redundancy.

Controls up to 16 pumps | 10" - 32" IP65 anti-scratch screen



KEYPAD

With real time data user interface. With the **DERAGGER+™** Keypad, the SD card stores up to 20 years of high resolution performance data.



ADVANCED KEYPAD

TCP/Ethernet Connectivity, built-in LTE available, LORA radio, start/stop function.



INDUSTRIAL FLOW SOLUTIONS™