



INDUSTRIAL  
FLOW  
SOLUTIONS™

## NON-SPARKING SLIDE RAIL ASSEMBLY

BJM Pumps® 204401

Dwg:

DS-C01-007

Rev:

1

Date:

7/30/2024

**NOTE: ALL DIMENSIONS ARE IN INCHES.**

### MATERIALS OF CONSTRUCTION:

**BASE ELBOW: CAST DUCTILE IRON**

**LIFT-OUT FLANGE: CAST DUCTILE IRON**

**W/BRONZE SEALING RING**

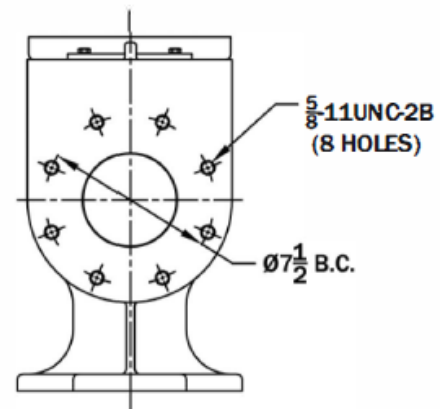
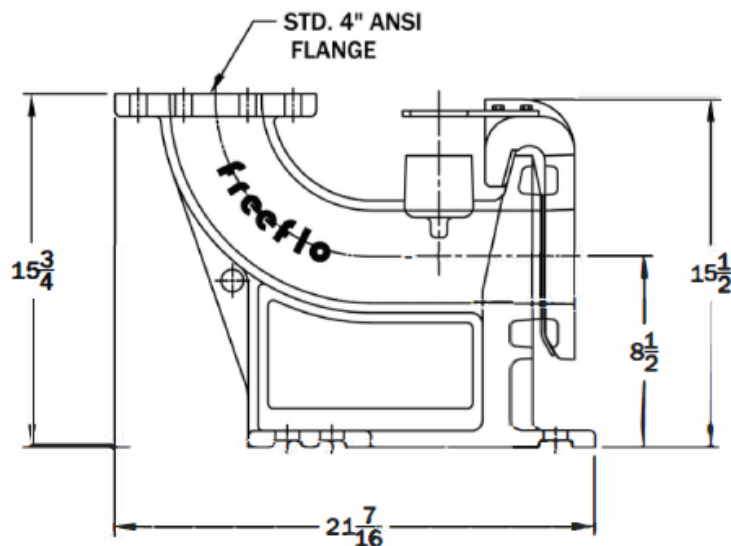
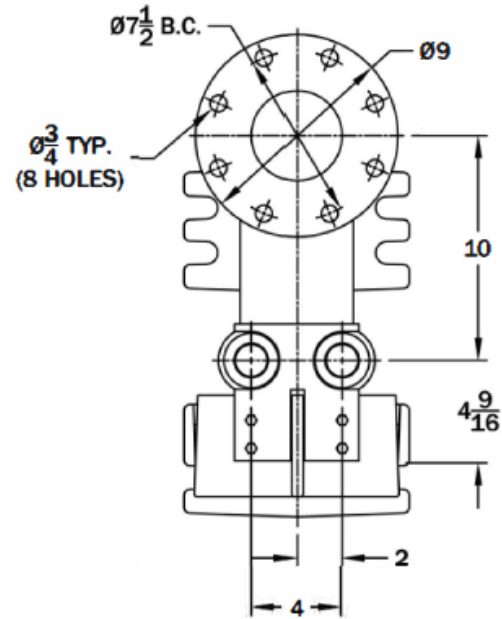
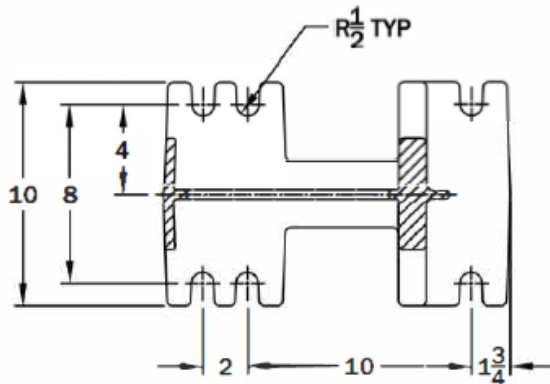
**LOWER GUIDE BRACKET: BRONZE**

**ALL FASTENERS ARE 304 SERIES SST**

**USEABLE GUIDE RAIL SIZES: 2"**

**MAXIMUM WEIGHT ALLOWANCE: 2000lbs.**

### MOUNTING DIMENSIONS



\*NOT TO SCALE\*

**NOTE:** FOR THE FOLLOWING BJM MODELS: XP-SK55C & XP-SK75C  
DISCHARGE SIZE: 4"

\*DRAWINGS PROVIDED FOR REFERENCE ONLY

©2024 Industrial Flow Solutions Operating, LLC. All rights reserved.

Industrial Flow Solutions Operating, LLC • 104 John W Murphy Drive, New Haven, CT 06513, USA  
(860) 631-3618 • [www.flowsolutions.com](http://www.flowsolutions.com)



INDUSTRIAL  
FLOW  
SOLUTIONS™

## NON-SPARKING SLIDE RAIL ASSEMBLY

BJM Pumps® 204401

Dwg:

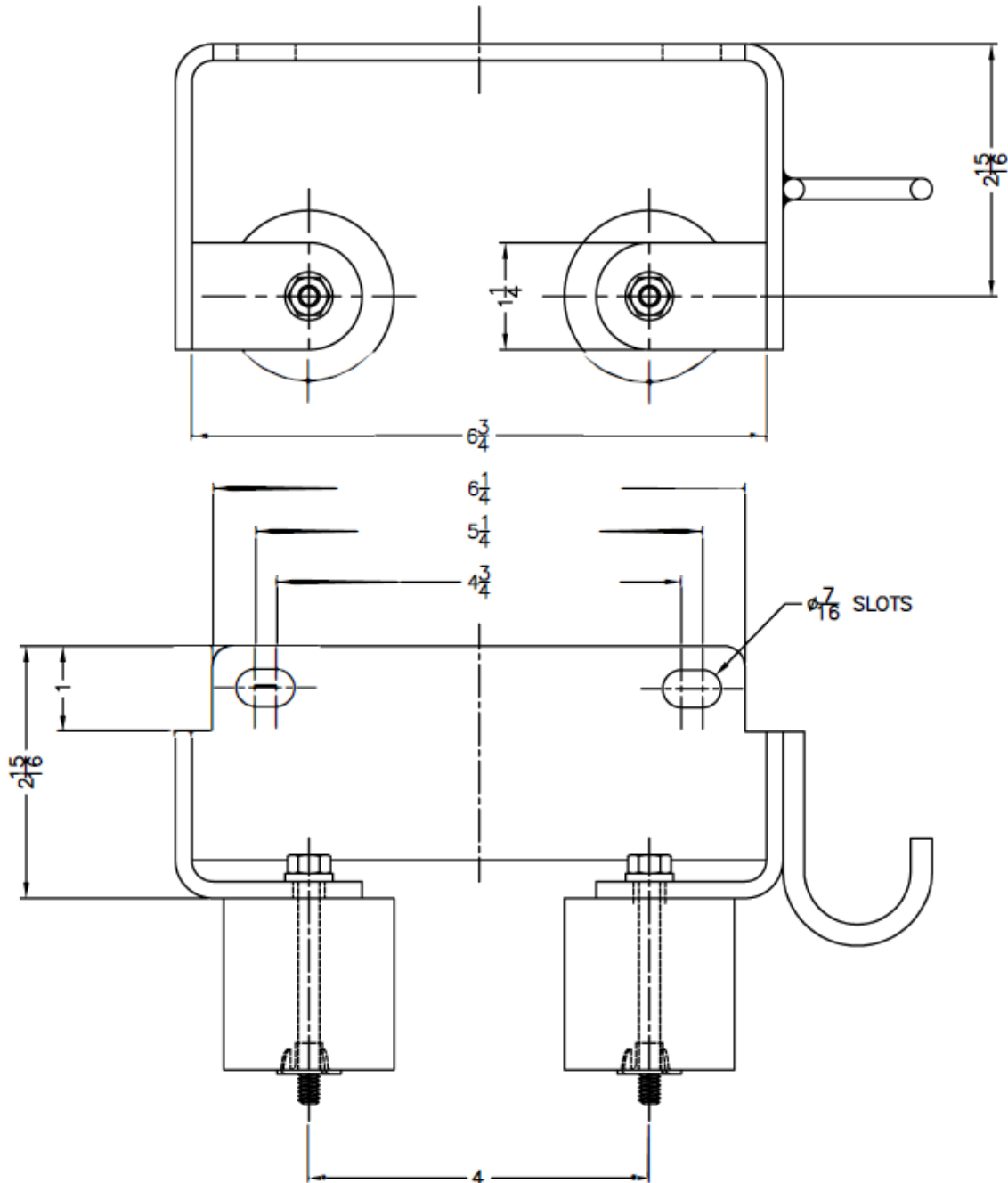
DS-C01-007

Rev:

1

Date:

7/30/2024



**MATERIAL SPECIFICATIONS:** 304SS

**DESCRIPTION:** BRACKET, UPPER GUIDE 2" RAILS

\*NOT TO SCALE\*

**NOTE:** FOR THE FOLLOWING BJM MODELS: XP-SK55C & XP-SK75C  
DISCHARGE SIZE: 4"

\*DRAWINGS PROVIDED FOR REFERENCE ONLY

©2024 Industrial Flow Solutions Operating, LLC. All rights reserved.

Industrial Flow Solutions Operating, LLC • 104 John W Murphy Drive, New Haven, CT 06513, USA

(860) 631-3618 • [www.flowsolutions.com](http://www.flowsolutions.com)